



**Sales - House - Estepona**  
**1.395.000€**

**[www.mibgroup.es](http://www.mibgroup.es)**  
**+34 662 58 96 58**  
**[info@mibgroup.es](mailto:info@mibgroup.es)**

 3

 3.5

 265 m2

 1757 m2

This magnificent villa represents a unique opportunity to acquire a tastefully renovated residence in one of the most sought-after areas of Estepona. Situated in the spacious and peaceful Don Pedro urbanization, the property is just five minutes from the beach, the marina, and the charming old town. Thanks to its elevated position, the villa enjoys beautiful open views of both the sea and the mountains, while offering total privacy in a serene and residential setting. Fully renovated in 2025, the property stands out for its refined style and meticulous attention to detail. The main house is laid out on a single floor and has been designed to provide comfort, elegance, and functionality. The interior spaces are warm and welcoming, featuring luxurious decoration that blends artisanal touches with modern finishes. The main residence includes a spacious living room with a traditional Andalusian fireplace, a handcrafted open-plan kitchen with solid wood cabinets and brand-new top-quality appliances, two bedrooms with en-suite bathrooms, and a guest toilet. Both the living room and kitchen open onto a large sunny terrace and a fully renovated private pool, surrounded by lush gardens with an automatic irrigation system and new outdoor lighting. An interior corridor connects the main house to an independent apartment, ideal for hosting guests or using as a second residence on the same plot. This apartment features an open-plan living-dining area with kitchen, one bedroom with an en-suite bathroom, and its own private access, ensuring full privacy. Beyond its thoughtful design, the villa also boasts fully upgraded systems installed in 2025, including a new air conditioning system, a modern hot water installation, new automatic garden irrigation, upgraded outdoor lighting, and a direct connection to the public sewage system (no septic tank). The property sits on a generous 1,757 m² plot, which includes an additional buildable plot, offering the possibility to construct a second home—making it a highly attractive option either as a family residence or as an investment with development potential. Outdoors, two electric gates provide access to a spacious parking area with room for more than five vehicles. A large partially covered patio completes this Mediterranean paradise, offering an ideal setting to enjoy the sun, peace, and outdoor living all year round. This villa is a unique property in its category, combining luxury, privacy, and versatility of spaces, ideal as a family residence or as an investment with high potential.

<b>Setting</b> <ul style="list-style-type: none"><li>✓ Close To Port</li><li>✓ Close To Shops</li><li>✓ Close To Sea</li><li>✓ Close To Town</li><li>✓ Close To Schools</li></ul>	<b>Orientation</b> <ul style="list-style-type: none"><li>✓ South</li></ul>	<b>Condition</b> <ul style="list-style-type: none"><li>✓ Excellent</li><li>✓ Recently Renovated</li></ul>	<b>Pool</b> <ul style="list-style-type: none"><li>✓ Private</li></ul>
<b>Climate Control</b> <ul style="list-style-type: none"><li>✓ Air Conditioning</li><li>✓ Fireplace</li></ul>	<b>Views</b> <ul style="list-style-type: none"><li>✓ Garden</li><li>✓ Pool</li></ul>	<b>Features</b> <ul style="list-style-type: none"><li>✓ Covered Terrace</li><li>✓ Fitted Wardrobes</li><li>✓ Near Transport</li><li>✓ Private Terrace</li><li>✓ Guest Apartment</li><li>✓ Storage Room</li><li>✓ Ensuite Bathroom</li><li>✓ Barbeque</li><li>✓ Double Glazing</li></ul>	<b>Furniture</b> <ul style="list-style-type: none"><li>✓ Fully Furnished</li></ul>
<b>Kitchen</b> <ul style="list-style-type: none"><li>✓ Kitchen-Lounge</li></ul>	<b>Garden</b> <ul style="list-style-type: none"><li>✓ Private</li></ul>	<b>Security</b> <ul style="list-style-type: none"><li>✓ Electric Blinds</li><li>✓ Alarm System</li></ul>	<b>Parking</b> <ul style="list-style-type: none"><li>✓ More Than One</li><li>✓ Private</li></ul>







































































































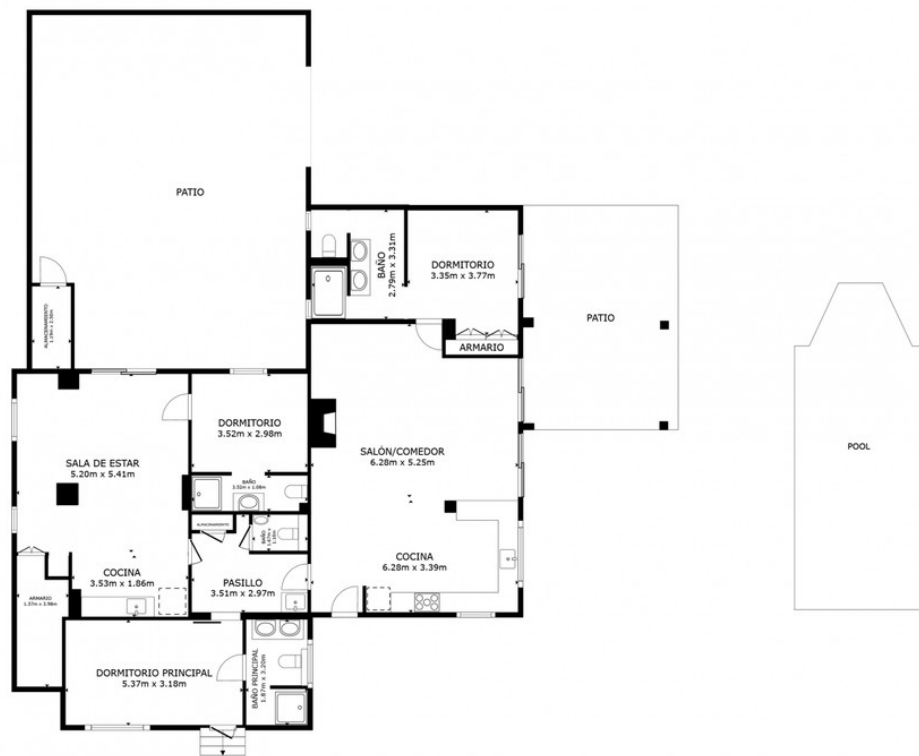












PLANTA

ÁREA INTERNA BRUTA  
 PLANTA 172.6 m<sup>2</sup>  
 ÁREAS EXCLUIDAS : PATIO 32.0 m<sup>2</sup> PATIO 85.7 m<sup>2</sup>  
 TOTAL : 172.6 m<sup>2</sup>  
 LOS TAMAÑOS Y LAS DIMENSIONES SON APROXIMADAS Y PUEDEN VARIAR EN ALGUNOS CASOS.