

Ref.-ID: MIBGR5147518

Estepona

House



3



4



220 m2

Modern Luxury Villa with Panoramic Golf & Sea Views in Estepona This newly built modern villa in Valle Romano Golf, Estepona, boasts breathtaking panoramic views over both the golf course and the Mediterranean Sea. Valle Romano is a highly sought-after area on the Costa del Sol, renowned for its golf resort and its appeal to golfers, holidaymakers, and those seeking a tranquil year-round residence close to both the beach and town. The villa is thoughtfully designed with light, space, and comfort in mind, featuring a private pool and a spectacular rooftop terrace. On the entrance level, an open-plan kitchen and dining area open onto large windows and a spacious terrace—perfect for relaxation or entertaining. The floor below offers a stylish and cozy TV room, while the upper level hosts three bedrooms with three bathrooms and a generous balcony with captivating views. The rooftop terrace crowns the property with even more impressive vistas. Private parking is conveniently located at the side of the house, while amenities such as a supermarket, pharmacy, and restaurants are only 3 km away. Estepona’s lively marina and new promenade are just 5 km from your doorstep. Combining modern luxury, stunning views, and a prime location, this villa is the perfect opportunity to enjoy the Costa del Sol lifestyle all year round.

Setting

- ✓ Close To Port
- ✓ Close To Shops
- ✓ Close To Sea
- ✓ Close To Schools

Climate Control

- ✓ Air Conditioning

Kitchen

- ✓ Fully Fitted

Utilities

- ✓ Electricity

Orientation

- ✓ South

Views

- ✓ Sea

Garden

- ✓ Private

Category

- ✓ Golf
- ✓ Luxury

Condition

- ✓ Excellent

Features

- ✓ Covered Terrace
- ✓ Lift
- ✓ Fitted Wardrobes
- ✓ Private Terrace
- ✓ Guest Apartment
- ✓ Ensuite Bathroom
- ✓ Barbeque
- ✓ Basement

Security

- ✓ Electric Blinds
- ✓ Entry Phone
- ✓ Alarm System

Pool

- ✓ Private

Furniture

- ✓ Fully Furnished

Parking

- ✓ Private



















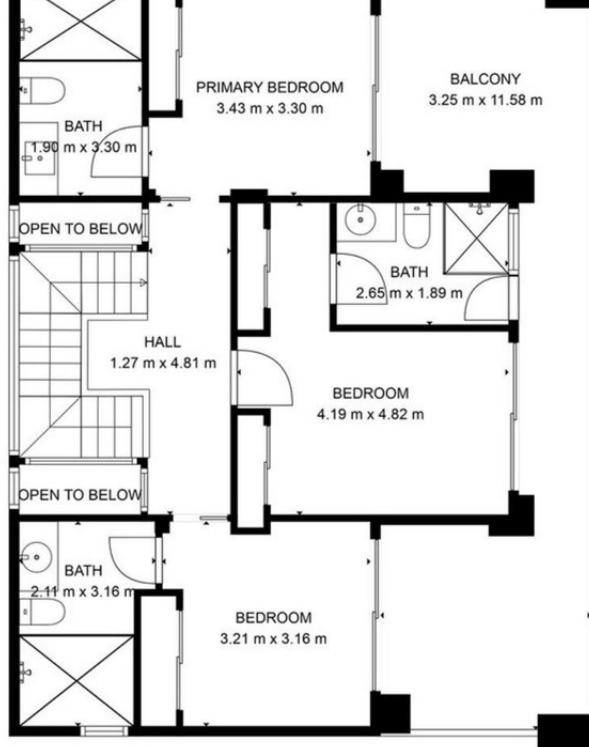






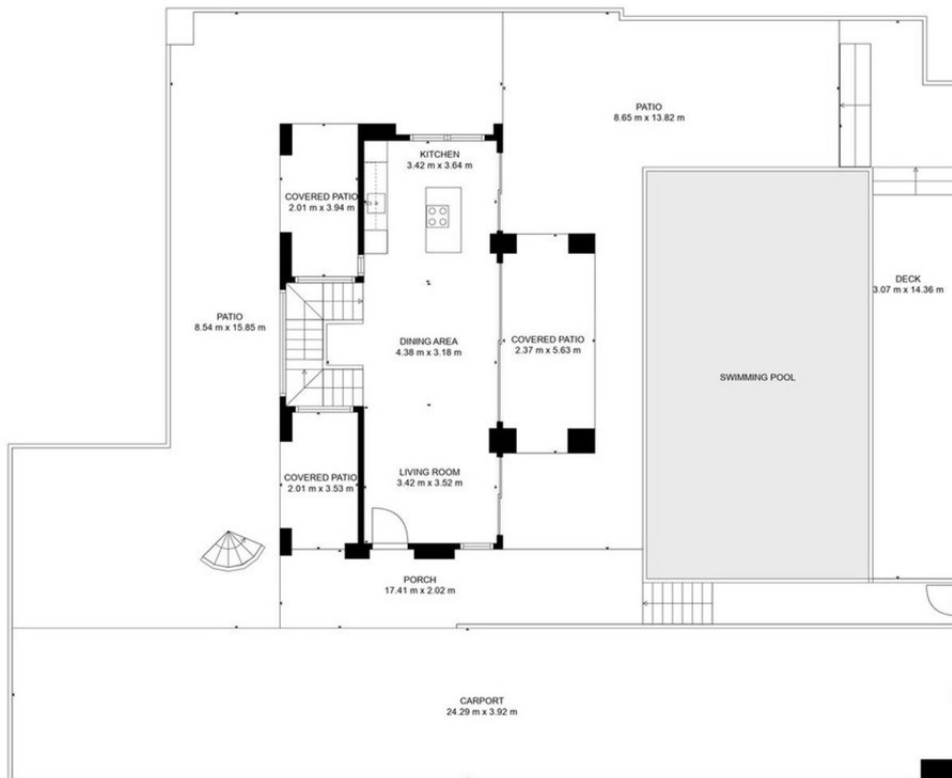






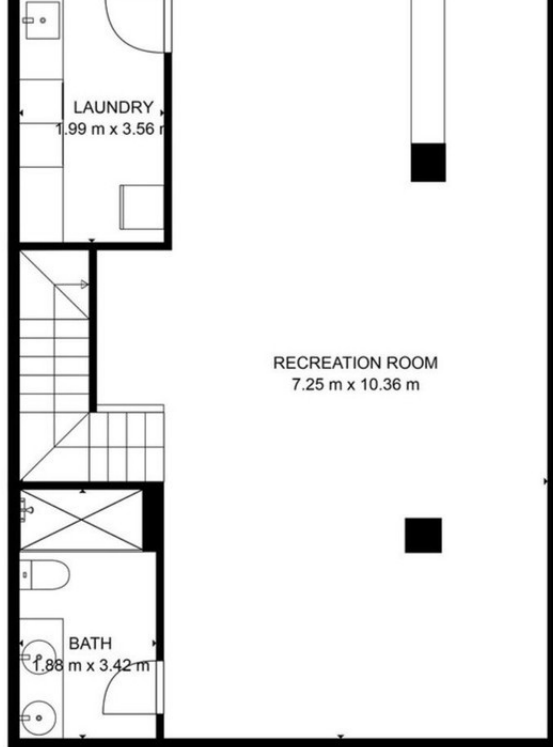
TOTAL: 187 m²
 BELOW GROUND: 75 m², FLOOR 2: 42 m², FLOOR 3: 70 m², FLOOR 4: 0 m²
 EXCLUDED AREAS: CARPORT: 95 m², PATIO: 136 m², COVERED PATIO: 28 m²,
 PORCH: 27 m², DECK: 33 m², OPEN TO BELOW: 2 m²,
 BALCONY: 27 m², ROOFTOP: 83 m²
 WALLS: 19 m²

FLOOR PLAN CREATED BY CUBICASA APP. MEASUREMENTS DEEMED HIGHLY RELIABLE BUT NOT GUARANTEED.



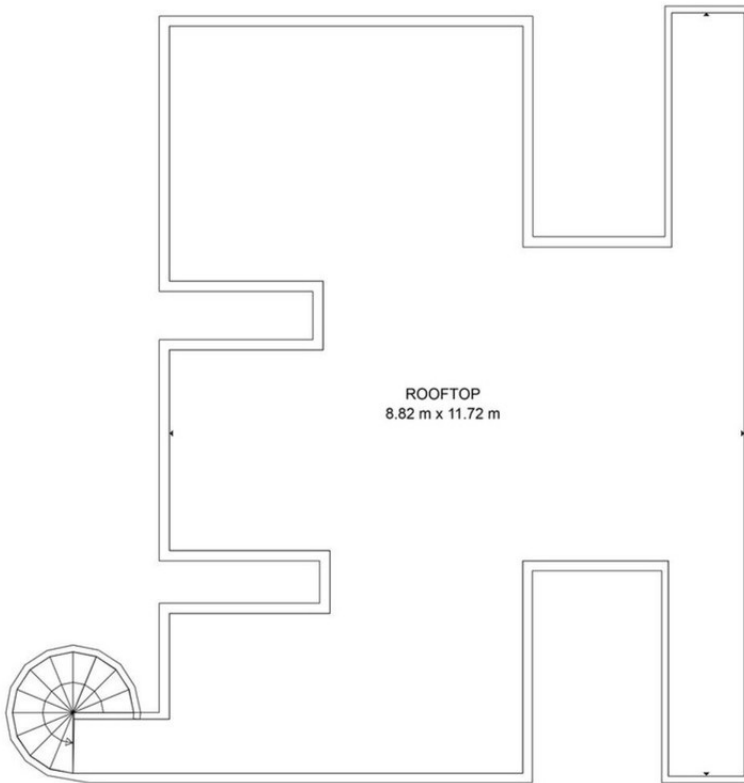
TOTAL: 187 m²
 BELOW GROUND: 75 m², FLOOR 2: 42 m², FLOOR 3: 70 m², FLOOR 4: 0 m²
 EXCLUDED AREAS: CARPORT: 95 m², PATIO: 136 m², COVERED PATIO: 28 m²,
 PORCH: 27 m², DECK: 33 m², OPEN TO BELOW: 2 m²,
 BALCONY: 27 m², ROOFTOP: 83 m²
 WALLS: 19 m²

FLOOR PLAN CREATED BY CUBICASA APP. MEASUREMENTS DEEMED HIGHLY RELIABLE BUT NOT GUARANTEED.



TOTAL: 187 m²
 BELOW GROUND: 75 m², FLOOR 2: 42 m², FLOOR 3: 70 m², FLOOR 4: 0 m²
 EXCLUDED AREAS: CARPORT: 95 m², PATIO: 136 m², COVERED PATIO: 28 m²,
 PORCH: 27 m², DECK: 33 m², OPEN TO BELOW: 2 m²,
 BALCONY: 27 m², ROOFTOP: 83 m²
 WALLS: 19 m²

FLOOR PLAN CREATED BY CUBICASA APP. MEASUREMENTS DEEMED HIGHLY RELIABLE BUT NOT GUARANTEED.



TOTAL: 187 m²
 BELOW GROUND: 75 m², FLOOR 2: 42 m², FLOOR 3: 70 m², FLOOR 4: 0 m²
 EXCLUDED AREAS: CARPORT: 95 m², PATIO: 136 m², COVERED PATIO: 28 m²,
 PORCH: 27 m², DECK: 33 m², OPEN TO BELOW: 2 m²,
 BALCONY: 27 m², ROOFTOP: 83 m²
 WALLS: 19 m²

FLOOR PLAN CREATED BY CUBICASA APP. MEASUREMENTS DEEMED HIGHLY RELIABLE BUT NOT GUARANTEED.