

Ref.-ID: MIBGR5152306

Benahavís

Apartment

IBI: 2,701 EUR / year



4



2.5



290 m2

Located within the prestigious Real de La Quinta resort, surrounded by nature and only minutes from Marbella and Puerto Banus, Palmitos is a luxury residential project designed by Villarroel Torrico. With only 2 blocks and 40 homes, Palmitos stands out for its exclusivity, south orientation and panoramic views of the sea, the mountains and the golf course. The properties combine space, elegance and quality, offering generous interior areas, large terraces perfect for year-round enjoyment, and access to beautifully designed communal areas. The layouts are conceived to maximize natural light and create seamless indoor-outdoor integration. Highlights Spacious living and dining areas with open-plan kitchens Large covered terraces with panoramic views Master bedrooms with en suite bathrooms High-quality finishes and premium appliances Modern design with floor-to-ceiling windows and glass railings Climate comfort with Daikin hot and cold air conditioning, underfloor heating in bathrooms, and optional water-based underfloor heating throughout Full home automation system with remote access Top-quality aluminium carpentry with double glazing and integrated blinds Resort amenities at Real de La Quinta Golf course and academy Navigable lake with water sports Tennis and paddle club Social club with restaurant, gym and spa 24-hour security Protected natural environment with hiking trails Palmitos represents a unique opportunity to live in a privileged natural setting with all the services of a luxury resort and the comfort of a contemporary design created for modern Mediterranean living.

Setting

- ✓ Frontline Golf
- ✓ Close To Golf
- ✓ Close To Shops
- ✓ Close To Town
- ✓ Close To Schools

Climate Control

- ✓ Air Conditioning
- ✓ U/F Heating

Garden

- ✓ Communal

Category

- ✓ Golf
- ✓ Luxury
- ✓ Resale

Orientation

- ✓ South

Views

- ✓ Sea
- ✓ Mountain
- ✓ Golf
- ✓ Panoramic

Security

- ✓ Gated Complex
- ✓ Electric Blinds
- ✓ 24 Hour Security

Condition

- ✓ Excellent
- ✓ New Construction

Features

- ✓ Covered Terrace
- ✓ Lift
- ✓ Fitted Wardrobes
- ✓ Private Terrace
- ✓ WiFi
- ✓ Gym
- ✓ Sauna
- ✓ Paddle Tennis
- ✓ Storage Room
- ✓ Ensuite Bathroom
- ✓ Access for people with reduced mobility
- ✓ Marble Flooring
- ✓ Double Glazing
- ✓ Domotics
- ✓ 24 Hour Reception
- ✓ Restaurant On Site

Parking

- ✓ Underground
- ✓ Covered
- ✓ More Than One
- ✓ Private

Pool

- ✓ Communal

Furniture

- ✓ Fully Furnished

Utilities

- ✓ Electricity







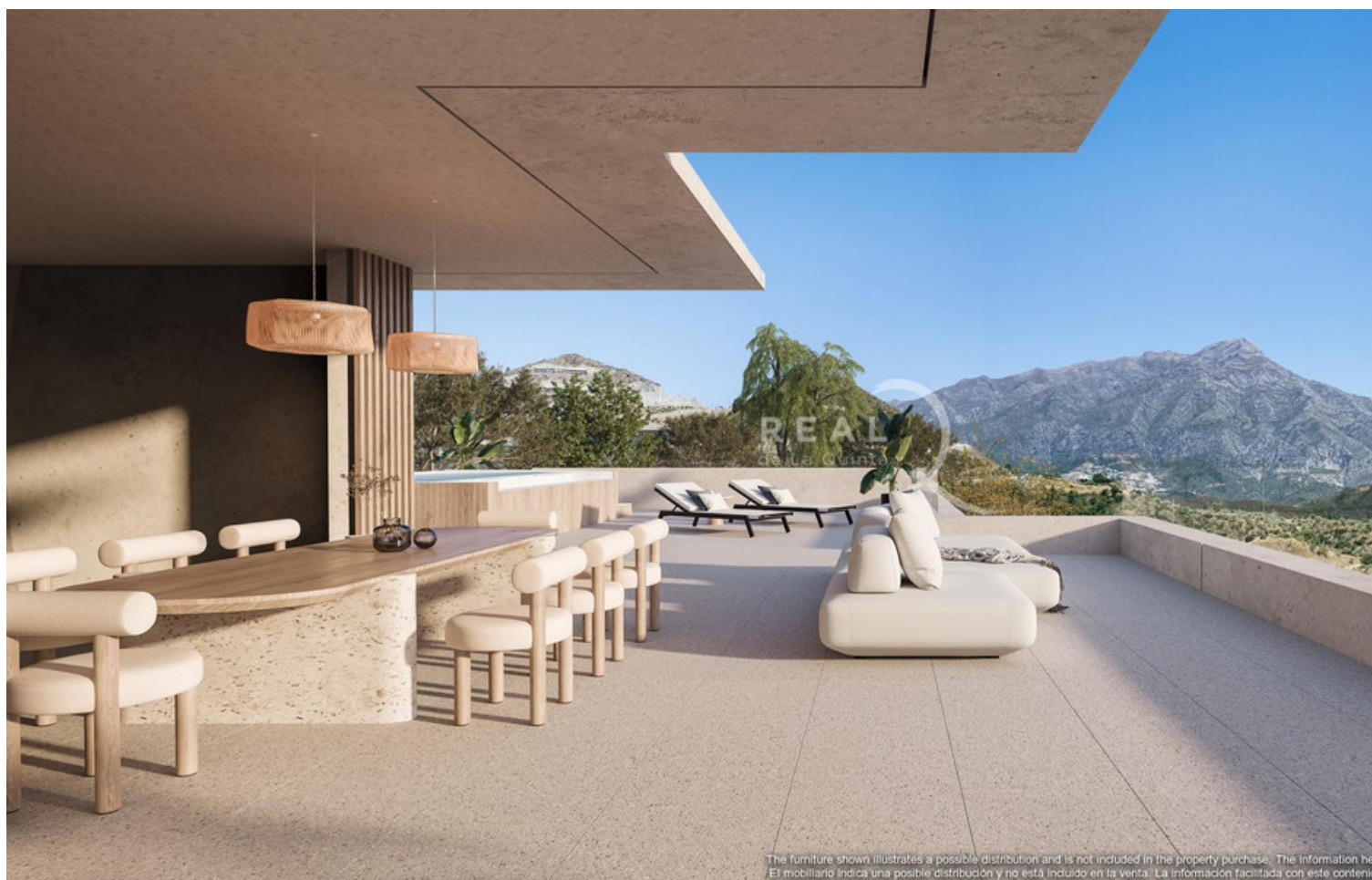


















character and may be subject to change.
eral estando sujeta a posibles cambios.



The furniture shown illustrates a possible distribution and is not included in the property purchase. The information herein is orientative and generic in character and may be subject to change.
El mobiliario indica una posible distribución y no está incluido en la venta. La información facilitada con este contenido es orientativa y de carácter general estando sujeta a posibles cambios.



