

Ref.-ID: MIBGR5159434

Fuengirola

Apartment



2



2



62 m2

This is a Resale Unit of a new development. We welcome you to the perfect modern coastal living with this newly built, contemporary 2-bedroom, 2-bathroom apartment in central Fuengirola—just 200 meters from the beach! Designed by renowned architects, this stylish home is the epitome of elegance and comfort, featuring an open-plan layout perfect for relaxation and entertaining. The sleek, fully equipped kitchen boasts the latest appliances, blending style with functionality in an inviting space that opens into a bright living area. West-facing, the apartment's private terrace captures the afternoon and evening sun, ideal for al fresco dining or unwinding in the sea breeze. Nestled in the heart of Fuengirola, you'll be steps away from vibrant restaurants, trendy bars, and boutique shops. With its unbeatable location and cutting-edge design, this residence offers a luxurious, convenient, and exclusive lifestyle in one of Costa del Sol's most sought-after locations. Set for completion in 2025, this is your chance to secure a prime, west-facing apartment in a dream location!

#### Setting

- ✓ Town
- ✓ Suburban
- ✓ Close To Port
- ✓ Close To Shops
- ✓ Close To Sea
- ✓ Close To Town
- ✓ Close To Schools
- ✓ Close To Marina

#### Views

- ✓ Mountain
- ✓ Urban
- ✓ Street

#### Security

- ✓ Electric Blinds
- ✓ Entry Phone

#### Orientation

- ✓ South West
- ✓ West

#### Features

- ✓ Covered Terrace
- ✓ Lift
- ✓ Fitted Wardrobes
- ✓ Near Transport
- ✓ Private Terrace
- ✓ WiFi
- ✓ Double Glazing
- ✓ Fiber Optic

#### Parking

- ✓ Street

#### Condition

- ✓ Excellent
- ✓ New Construction

#### Furniture

- ✓ Optional

#### Category

- ✓ Holiday Homes
- ✓ Investment
- ✓ Luxury
- ✓ Resale
- ✓ Contemporary

#### Climate Control

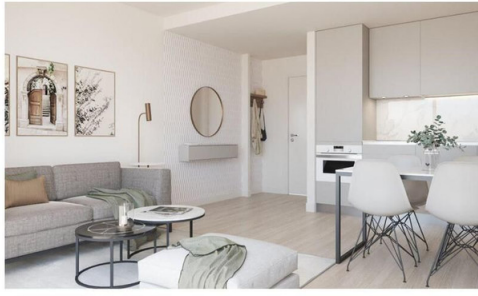
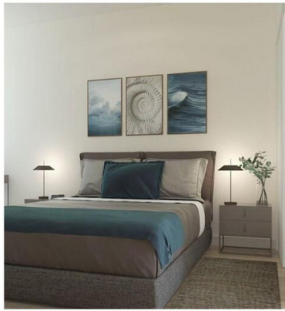
- ✓ Air Conditioning

#### Kitchen

- ✓ Fully Fitted















PLANTA SEGUNDA -VIVIENDA A

SUPERFICIES ÚTILES TOTALES	51.33 m²
SUPERFICIES CONSTRUIDAS TOTALES	61.57 m²
SUPERFICIES CONSTRUIDAS TOTALES + ZONAS COMUNES	76.20 m²

