

**Ref.-ID: MIBGR5162749**

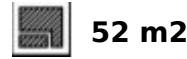
**Benalmadena Pueblo**

**Apartment**

**Community: 720 EUR / year**

**IBI: 531 EUR / year**

**Rubbish: 75 EUR / year**



Discover a rare opportunity to own a charming penthouse in the heart of picturesque Benalmádena Pueblo — complete with panoramic Mediterranean views and an underground parking space. The true highlight of this home is the sun-drenched south-facing terrace (18 m<sup>2</sup>), offering open sea and rooftop views across the whitewashed village. A perfect setting for morning coffee, sunset dinners, and year-round outdoor living. Inside, the apartment is thoughtfully designed to maximise space and light. •Bright living area with open-plan kitchen •Two bedrooms, including a main bedroom with sea views •Modern bathroom with jacuzzi •Air conditioning throughout The building includes a lift and secure underground parking — a highly valued feature in the historic village centre. Located just a short stroll from cafés, restaurants, shops, and local amenities, this penthouse offers authentic Andalusian charm while remaining well connected to the coast, beaches, golf courses and Málaga Airport. Whether as a refined holiday retreat, investment property, or permanent residence, this is a home that combines location, views and lifestyle in one unique package.

**Setting**

- ✓ Close To Golf
- ✓ Close To Shops
- ✓ Close To Town
- ✓ Close To Schools

**Views**

- ✓ Sea
- ✓ Mountain
- ✓ Panoramic
- ✓ Urban

**Parking**

- ✓ Communal

**Orientation**

- ✓ South

**Features**

- ✓ Lift
- ✓ Near Transport
- ✓ Private Terrace
- ✓ Jacuzzi
- ✓ Double Glazing

**Utilities**

- ✓ Electricity
- ✓ Drinkable Water

**Condition**

- ✓ Excellent

**Furniture**

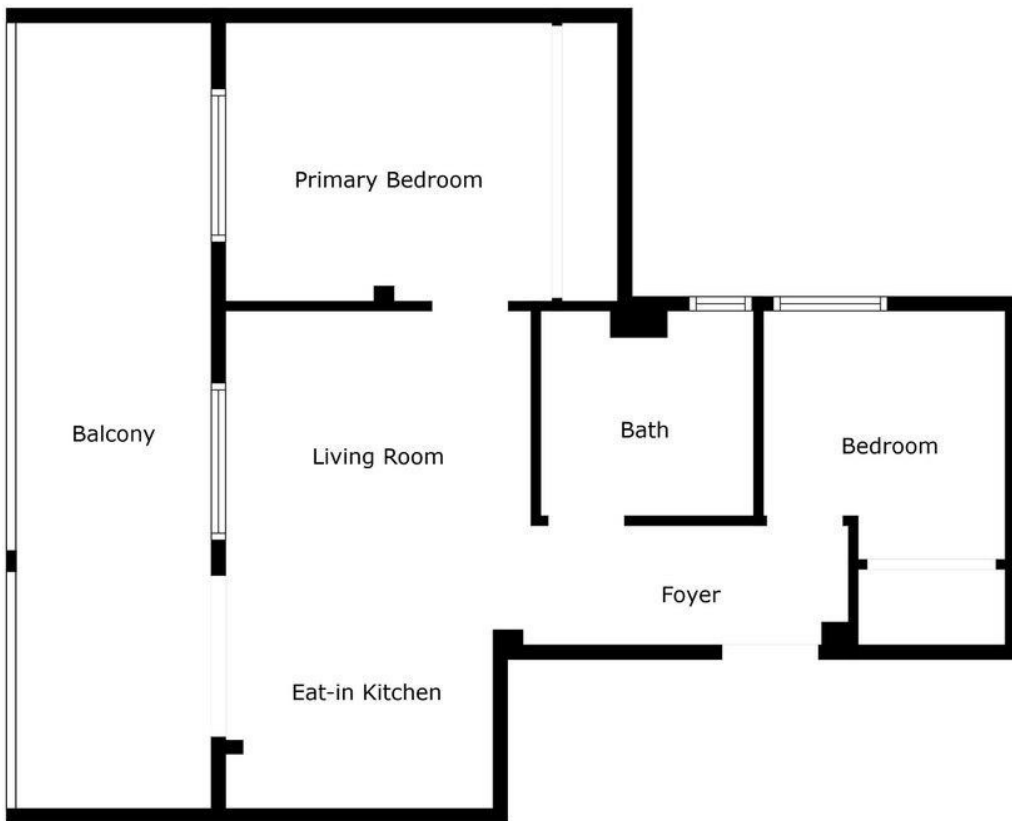
- ✓ Optional

**Climate Control**

- ✓ Air Conditioning

**Security**

- ✓ Alarm System



Floor Plan Created By Cubicasa App. Measurements Deemed Highly Reliable But Not Guaranteed.

















