

Ref.-ID: MIBGR5198578

Benalmadena Costa

Commercial



1028 m2

Excellent investment opportunity in one of the most consolidated and sought-after areas of the Costa del Sol. This property, located in Benalmádena Costa, comes with an approved basic project for the development of a parking and storage complex. Main features: • Built area: 1,028 m² • Current use: Parking and storage units • Approved basic project: □ • Planned distribution: 33 parking spaces + 33 storage rooms Situated in a residential and touristic area with high demand for both storage and parking, this project ensures solid and sustainable profitability — whether through sales or rentals. Just a few minutes from the beach and surrounded by residential buildings, shops, and hotels, this property represents a tangible, safe, and high-return investment right in the heart of Benalmádena Costa. Ideal for developers or investors seeking a profitable and low-risk asset in a prime location on the Costa del Sol.

Setting

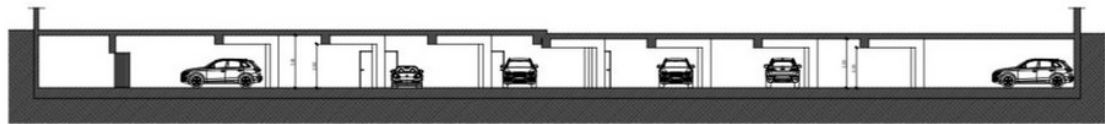
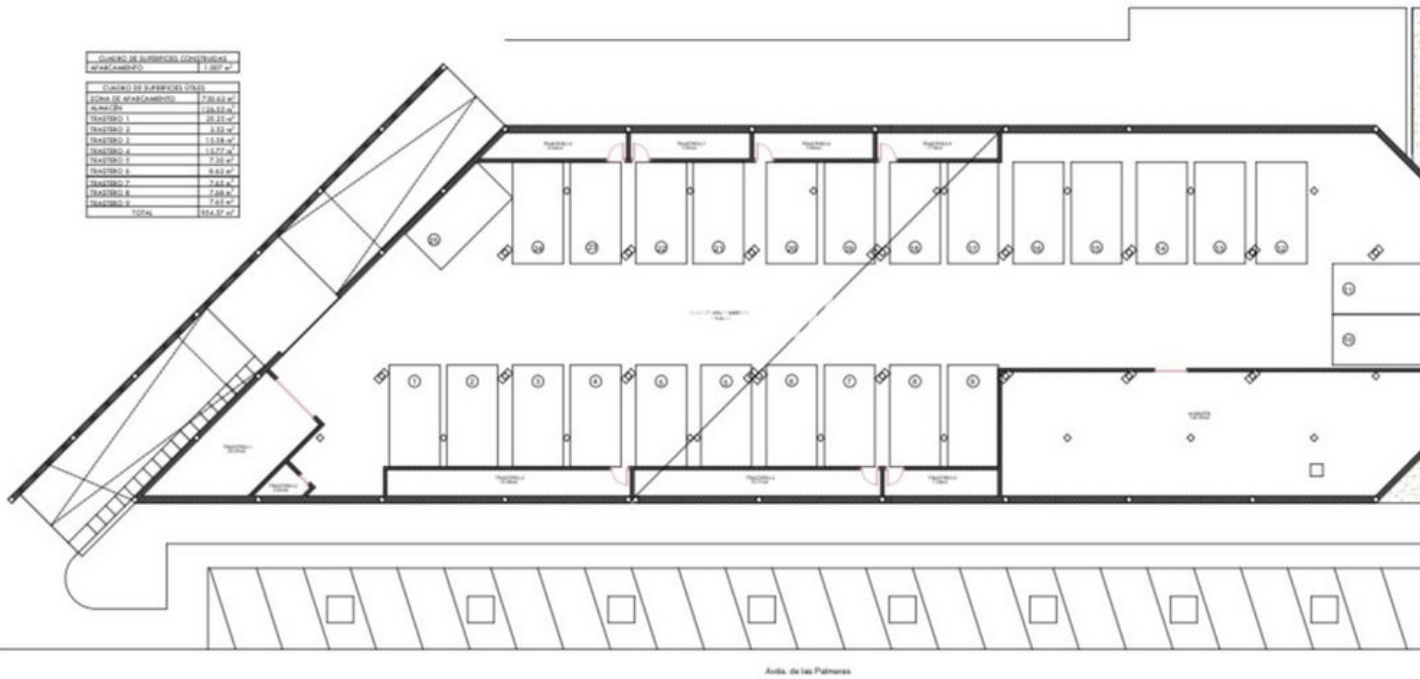
- ✓ Beachside
- ✓ Close To Golf
- ✓ Close To Port
- ✓ Close To Shops
- ✓ Close To Town
- ✓ Close To Schools

Features

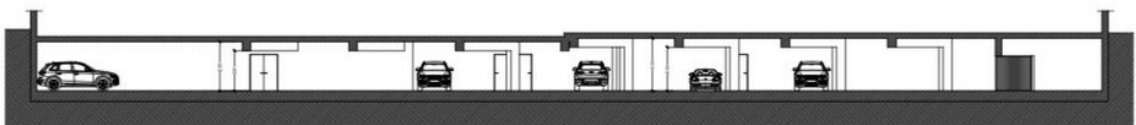
- ✓ Near Transport

CANTIDAD DE SUPERFICIES CONSTRUIDAS	
APARCAMIENTO	1.007 m ²

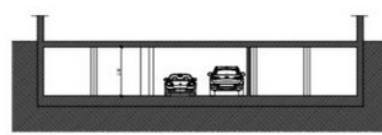
CANTIDAD DE SUPERFICIES VIGAS	
ÁREA DE APARCAMIENTO	720.63 m ²
ÁREA DE PASADIZO	128.55 m ²
TRAYECTO 1	20.22 m ²
TRAYECTO 2	5.33 m ²
TRAYECTO 3	11.18 m ²
TRAYECTO 4	13.77 m ²
TRAYECTO 5	7.20 m ²
TRAYECTO 6	6.52 m ²
TRAYECTO 7	7.88 m ²
TRAYECTO 8	2.66 m ²
TRAYECTO 9	7.53 m ²
TOTAL	814.97 m ²



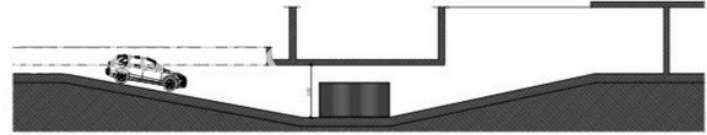
SECCIÓN A-A'



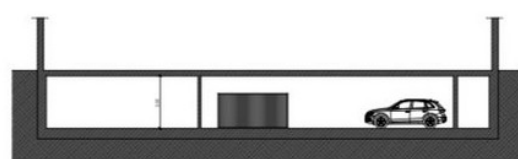
SECCIÓN B-B'



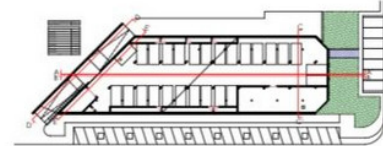
SECCIÓN C-C'



SECCIÓN D-D'



SECCIÓN E-E'



PROYECTO BÁSICO DE REFORMA DE APARCAMIENTO
Avenida de las Palmeras #7A, Benidorm (Alicante)

PROYECTISTA: ALPHA CAPITAL DEVELOPMENTS S.L.
ARQUITECTO: D. Sergio López Hernández

PROYECTO: REFORMA DE APARCAMIENTO
FECHA: 10 de septiembre del año 2020
FOLIO: 04

SEÑALADO ACTUAL: SECCIONES
SECCION