

**Ref.-ID: MIBGR5211460**

**Estepona**

**Apartment**



**2**



**2**



**111 m2**

There is something very easy about this apartment. It sits on a bright corner in Estepona's historic centre, next to a plaza, with the life of the town just outside and the beach only a short walk away. Light comes in from more than one side, which gives the home a cheerful, open feel that is not always easy to find in old town properties. The balconies bring in the street, the atmosphere, the sound of daily life. You feel part of the town, not shut away from it. Inside there are two bedrooms and two bathrooms, with a layout that works well both for living and for coming and going with ease. The lift is a real advantage here, and adds to that rare feeling of comfort in the middle of the historic centre. This is not about flashy luxury. The real luxury is different. It is having sun, light, a corner position, a café on the plaza below, the sea within walking distance, and a home that is easy to enjoy from the moment you arrive. The tourist license adds another layer of freedom. It works well for someone who wants a home in the sun to use throughout the year, and the option to rent it out the rest of the time. For many northern European and American buyers, this is exactly what they are looking for in southern Spain: charm, sunshine, walkability, and a home that makes life feel lighter.

**Setting**

- ✓ Town
- ✓ Commercial Area
- ✓ Close To Port
- ✓ Close To Shops
- ✓ Close To Sea
- ✓ Close To Schools
- ✓ Close To Marina

**Features**

- ✓ Lift
- ✓ Fitted Wardrobes
- ✓ Near Transport
- ✓ Ensuite Bathroom
- ✓ Access for people with reduced mobility
- ✓ Near Church

**Condition**

- ✓ Excellent
- ✓ Recently Renovated

**Furniture**

- ✓ Fully Furnished

**Climate Control**

- ✓ Air Conditioning
- ✓ Central Heating
- ✓ U/F Heating
- ✓ U/F/H Bathrooms

**Kitchen**

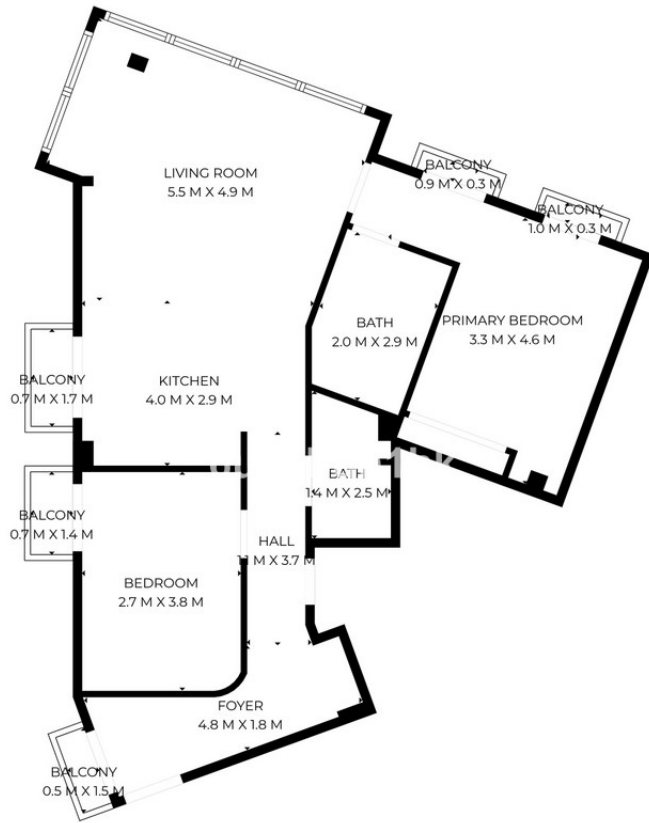
- ✓ Fully Fitted

**Views**

- ✓ Panoramic
- ✓ Street

**Category**

- ✓ Contemporary



SIZES ARE APPROXIMATE, ACTUAL MAY VARY.

















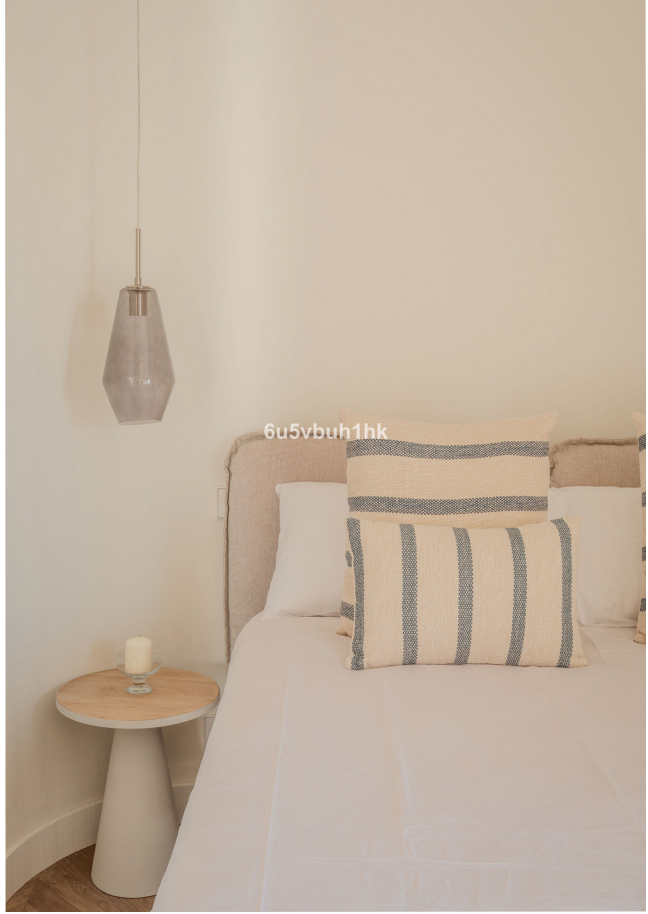
6u5vbuh1hk



6u5vbuh1hk



6u5vbuh1hk





6u5vbuh1hk



6u5vbuh1hk