

Ref.-ID: MIBGR5217487

Marbella

House

Community: 2,760 EUR / year IBI: 582 EUR / year

Rubbish: 185 EUR / year



2



3



96 m2

Stunning Townhouse in Lomas Pueblo – Tourist licence Included! Perfectly located in the charming Lomas Pueblo, just a five-minute walk from Puente Romano resort, the Forum Center, and Marbella’s golden beaches, this beautifully renovated townhouse blends Andalusian charm with modern luxury. The home offers 96 m² of living space plus 35 m² of terraces, distributed over two bright levels. The main floor features an open-plan living and dining area, a stylish white kitchen, and a statement iron-and-glass fireplace. Large glass doors open onto a sunny private patio — ideal for dining or relaxing outdoors. An adjacent outbuilding houses a laundry area, toilet and shower, designed for both functionality and style. Upstairs, two serene bedrooms provide a peaceful retreat, with the primary suite overlooking lush communal gardens. High-end finishes include Marazzi Italian tiles, Treemme fixtures, Villeroy & Boch appliances, and porcelain flooring throughout. Underfloor heating ensures comfort year-round. Residents of Lomas Pueblo enjoy an exclusive community atmosphere with a clubhouse, social areas, and a heated communal pool for use well into autumn. A rare blend of location, elegance, and lifestyle — perfect as a permanent home, holiday retreat, or investment with its included tourist licence.

Setting

- ✓ Close To Golf
- ✓ Close To Port
- ✓ Close To Shops
- ✓ Close To Sea
- ✓ Close To Town
- ✓ Close To Schools

Climate Control

- ✓ Air Conditioning

Kitchen

- ✓ Fully Fitted

Orientation

- ✓ South East

Views

- ✓ Garden

Garden

- ✓ Communal

Condition

- ✓ Excellent

Features

- ✓ Fitted Wardrobes
- ✓ Private Terrace
- ✓ WiFi
- ✓ Utility Room
- ✓ Double Glazing
- ✓ Fiber Optic

Security

- ✓ Gated Complex
- ✓ Alarm System

Pool

- ✓ Communal

Furniture

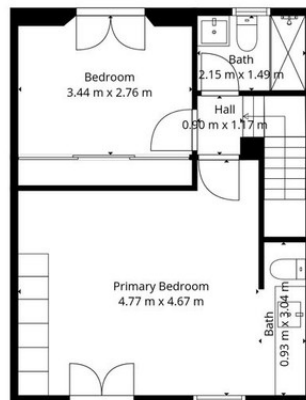
- ✓ Fully Furnished
- ✓ Optional

Parking

- ✓ Communal



Floor 1



Floor 2

TOTAL: 91 m2
FLOOR 1: 48 m2, FLOOR 2: 43 m2
EXCLUDED AREAS: PATIO: 26 m2, WALLS: 9 m2

Floor Plan Created By Cubicasa App. Measurements Deemed Highly Reliable But Not Guaranteed.



























