

Ref.-ID: MIBGR5217706

Coín

House

IBI: 244 EUR / year

Rubbish: 75 EUR / year



3



2



145 m2



8430 m2

Surrounded by rolling hills and endless countryside views, this charming rural property offers the perfect escape for anyone craving space, peace, and a slower pace of life. Set on over 8,000m<sup>2</sup> of flat, usable land, it's an ideal setting for keeping horses, growing your own produce, or simply enjoying the freedom of the open outdoors. The main house is full of character, with two comfortable bedrooms, a family bathroom, a spacious kitchen that's made for cooking and gathering, and a cosy living room complete with a log burner for those cooler evenings. An enclosed terrace extends the living space and makes a wonderful dining area, where you can enjoy long, lazy meals while taking in the countryside views. Just a short stroll away, the guest house offers a warm welcome for friends and family, featuring an open-plan living and kitchen area, one bedroom, and a bathroom. Both houses have hot and cold air conditioning, so you'll stay comfortable whatever the season. The land itself is brimming with potential. Fully fenced and connected to the municipal water supply, it includes several storage sheds, an above-ground pool for summer fun, and a second pool that could be brought back to life with a little TLC. With the AFO already in place, all the groundwork is done for you to create your own country haven. Located between Cerralba and Gibrálgala, this peaceful retreat is just 30 minutes from Málaga and the airport—close enough for convenience, yet far enough to feel a world away. Whether you're dreaming of a smallholding, an equestrian property, or simply a quiet place to call home, this is a slice of true Andalusian countryside living.

#### Setting

✓ Country

#### Views

✓ Mountain  
✓ Panoramic

#### Garden

✓ Private

#### Orientation

✓ South

#### Features

✓ Private Terrace  
✓ Guest House  
✓ Storage Room  
✓ Ensuite Bathroom  
✓ Double Glazing

#### Parking

✓ Private

#### Pool

✓ Private

#### Furniture

✓ Optional

#### Utilities

✓ Electricity  
✓ Drinkable Water

#### Climate Control

✓ Air Conditioning  
✓ Fireplace

#### Kitchen

✓ Fully Fitted

#### Category

✓ Resale





































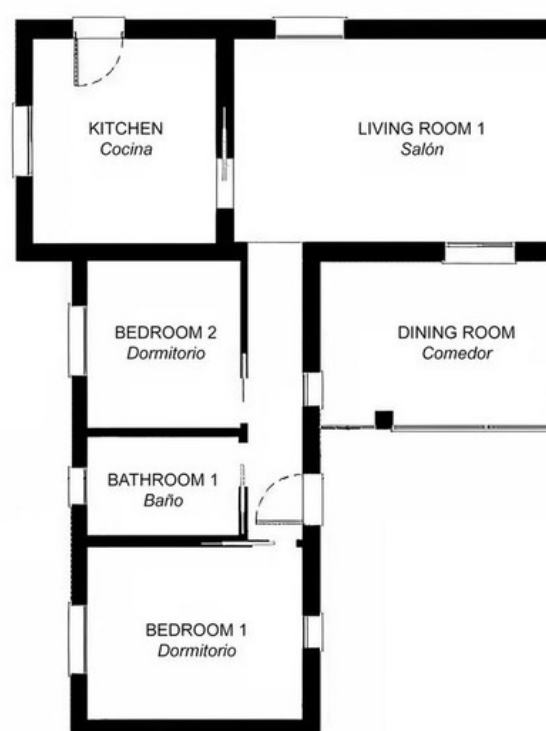
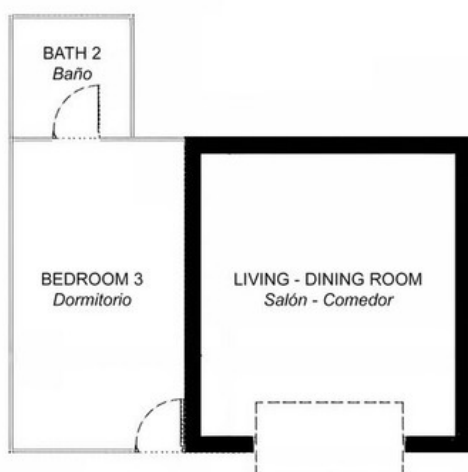












This is a representation of the layout of the property and it is not to scale.  
 Esta es una representación de la distribución de la propiedad y no está a escala.