

Ref.-ID: MIBGR5227267

Benalmadena

House

IBI: 367 EUR / year



4



4



500 m2



700 m2

Some homes are beautiful... others make you fall in love the moment you see the view. This stunning contemporary villa in Santángelo Norte, Benalmádena, offers uninterrupted panoramic views of the Mediterranean, complete privacy and spacious modern living. The property is distributed over three levels and features 4 spacious bedrooms with en-suite bathrooms, a guest toilet, two walk-in wardrobes and large private terraces where the sea views become part of everyday life. The open-plan kitchen connects seamlessly with the living area and terraces, creating a perfect indoor-outdoor lifestyle ideal for enjoying the Costa del Sol climate all year round. One of the main highlights of the property is its spectacular infinity pool, perfectly positioned to maximise the breathtaking sea views. Additional features include a large private garage with capacity for 5-6 cars. The villa is sold fully furnished and ready to move in. ? Located in Santángelo Norte, one of Benalmádena's most sought-after residential areas thanks to its tranquillity, elevated views and excellent connections to Málaga city, the international airport and the entire Costa del Sol. □ A perfect property as a permanent residence, luxury holiday home or investment opportunity. Key Features Brand-new contemporary villa Infinity pool Panoramic sea views Large terraces Private garage (5-6 cars) Fully furnished Quiet residential area Santángelo Norte - Benalmádena

Setting

- ✓ Port
- ✓ Close To Golf
- ✓ Close To Port
- ✓ Close To Shops
- ✓ Close To Sea
- ✓ Close To Town
- ✓ Close To Schools
- ✓ Close To Forest
- ✓ Marina
- ✓ Close To Marina
- ✓ Urbanisation

Climate Control

- ✓ Air Conditioning
- ✓ Hot A/C
- ✓ Cold A/C

Kitchen

- ✓ Fully Fitted

Utilities

- ✓ Electricity
- ✓ Drinkable Water
- ✓ Telephone
- ✓ Photovoltaic solar panels
- ✓ Solar water heating

Orientation

- ✓ East
- ✓ South East
- ✓ South
- ✓ South West
- ✓ West

Views

- ✓ Sea
- ✓ Mountain
- ✓ Golf
- ✓ Beach
- ✓ Country
- ✓ Panoramic
- ✓ Pool
- ✓ Urban
- ✓ Forest
- ✓ Street

Garden

- ✓ Private
- ✓ Landscaped
- ✓ Easy Maintenance

Category

- ✓ Bargain
- ✓ Beachfront
- ✓ Cheap
- ✓ Distressed
- ✓ Golf
- ✓ Holiday Homes
- ✓ Investment
- ✓ Luxury
- ✓ Resale
- ✓ Contemporary

Condition

- ✓ Excellent
- ✓ New Construction

Features

- ✓ Covered Terrace
- ✓ Lift
- ✓ Fitted Wardrobes
- ✓ Near Transport
- ✓ Private Terrace
- ✓ Solarium
- ✓ Satellite TV
- ✓ WiFi
- ✓ Games Room
- ✓ Storage Room
- ✓ Utility Room
- ✓ Ensuite Bathroom
- ✓ Access for people with reduced mobility
- ✓ Barbeque
- ✓ Double Glazing
- ✓ Domotics
- ✓ Courtesy Bus
- ✓ Near Mosque
- ✓ Near Church
- ✓ Basement
- ✓ Fiber Optic

Security

- ✓ Gated Complex
- ✓ Electric Blinds
- ✓ Entry Phone
- ✓ Alarm System
- ✓ 24 Hour Security

Pool

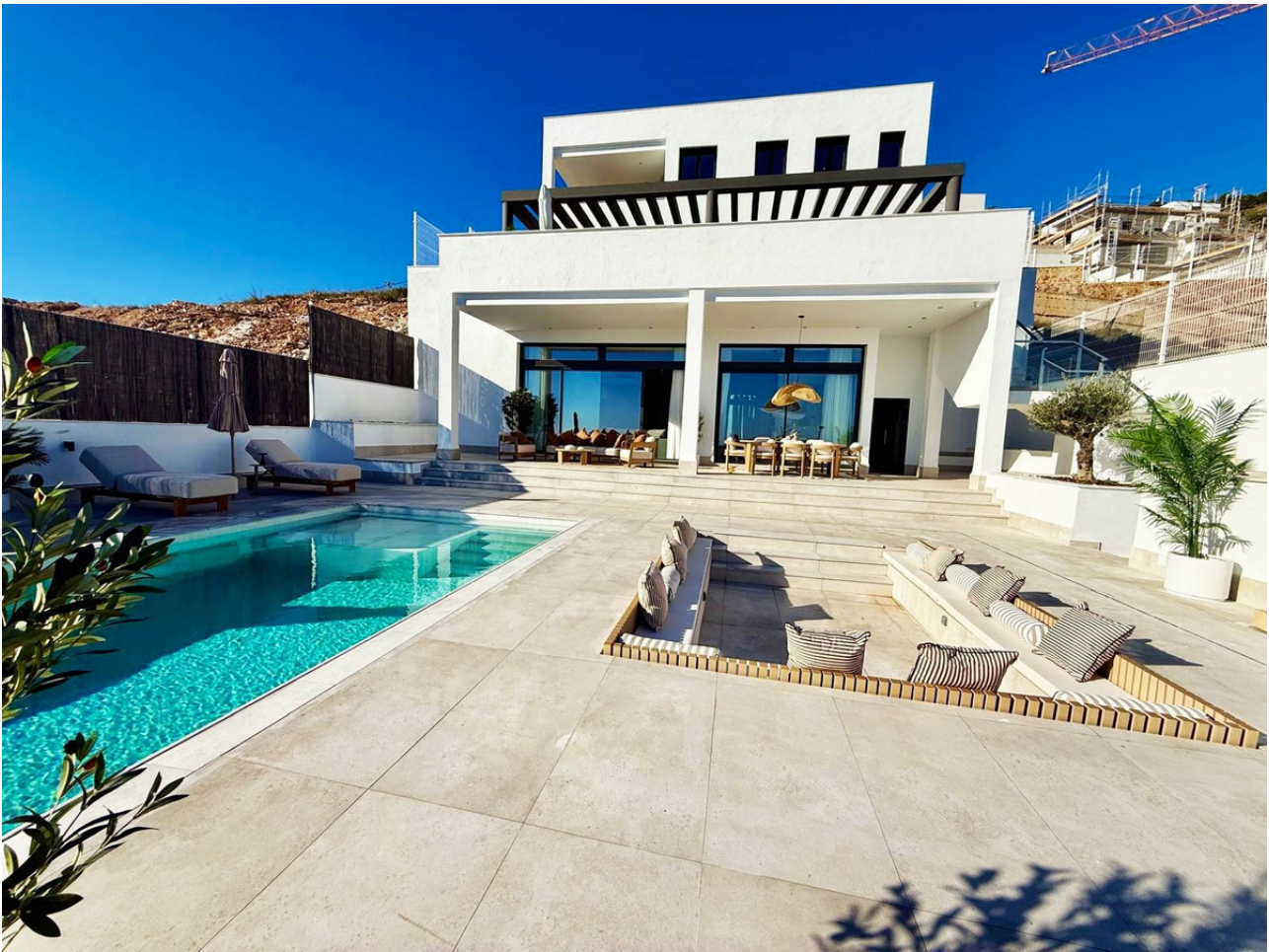
- ✓ Private

Furniture

- ✓ Fully Furnished

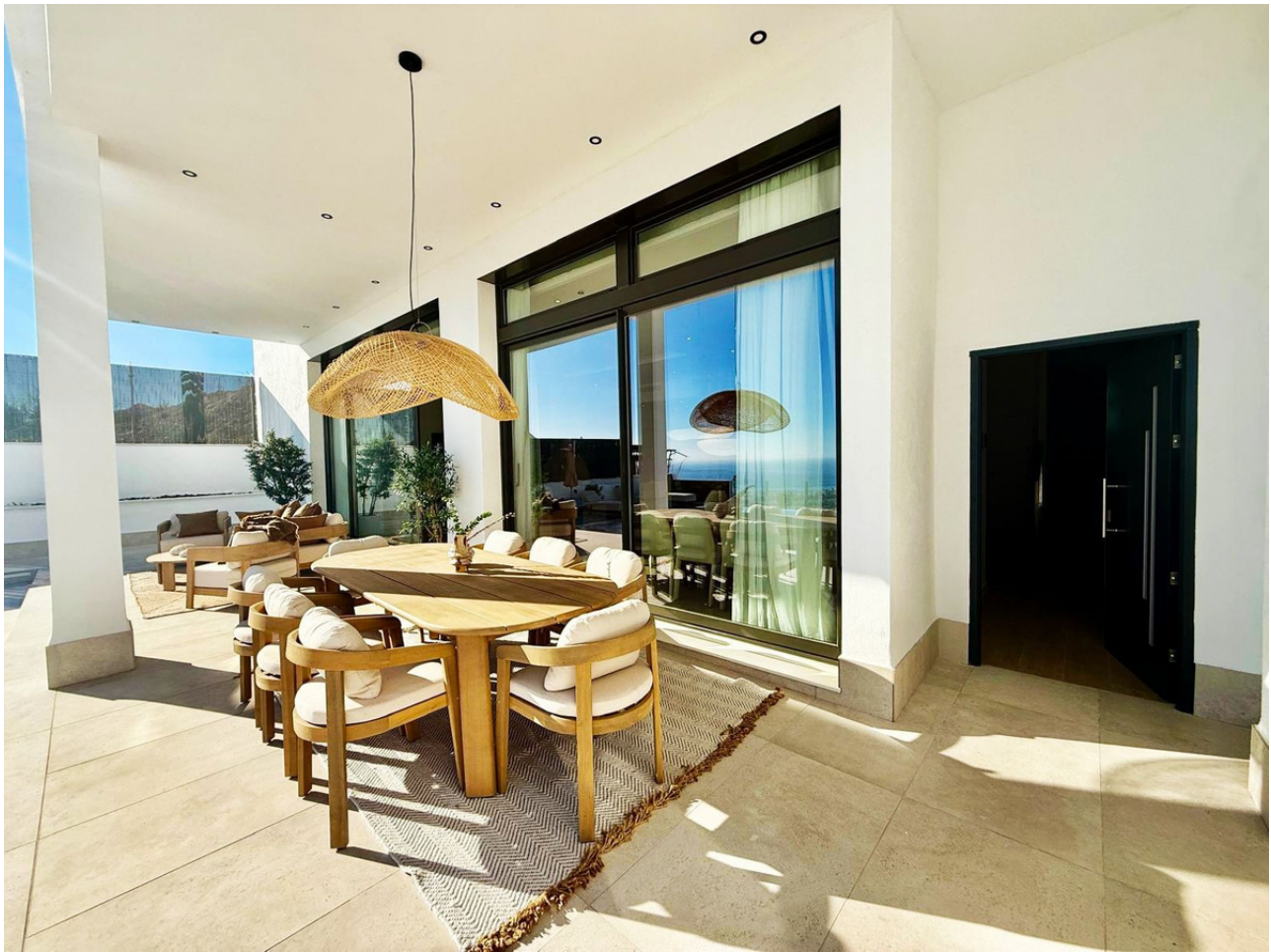
Parking

- ✓ Underground
- ✓ Garage
- ✓ Covered
- ✓ More Than One
- ✓ Private































































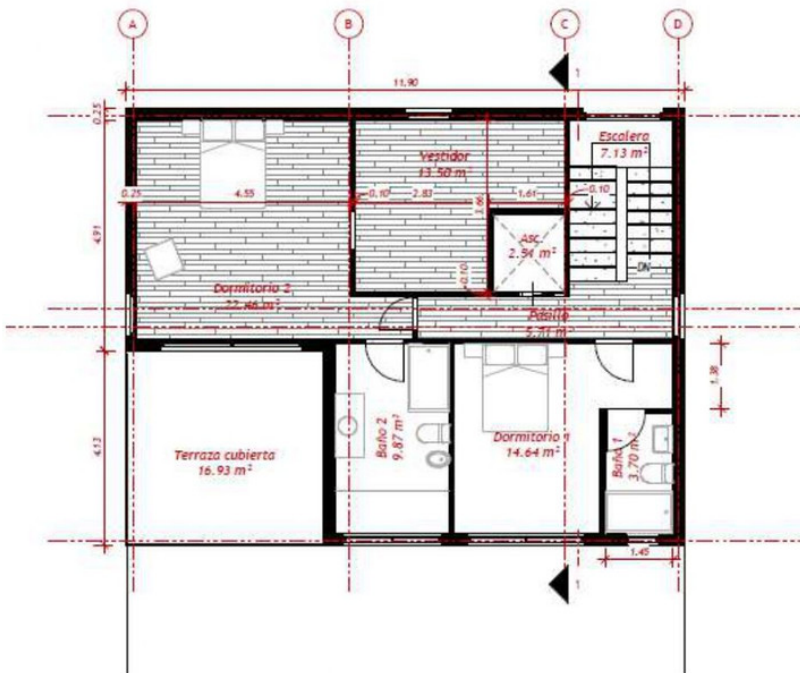




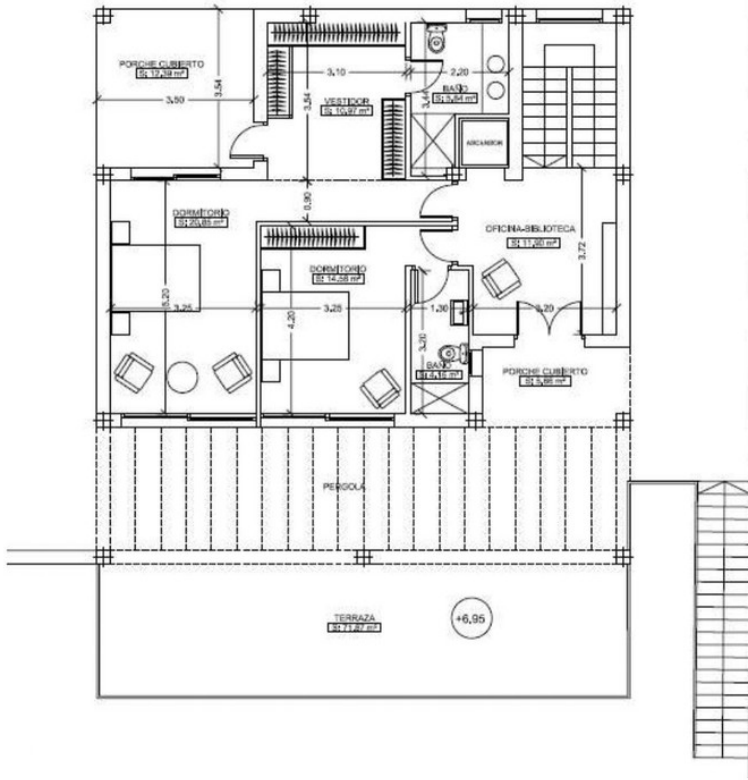




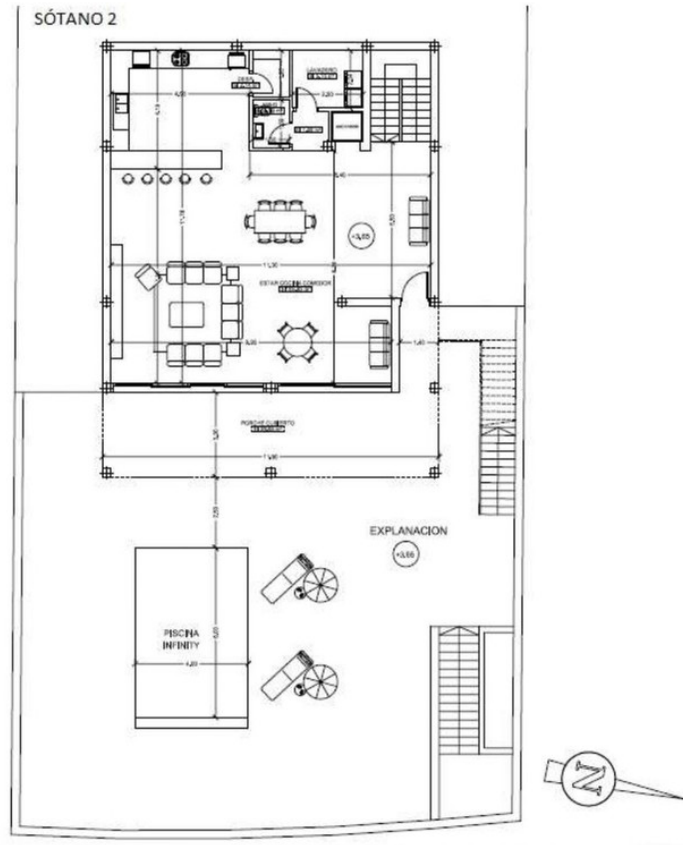
PLANTA PRIMERA



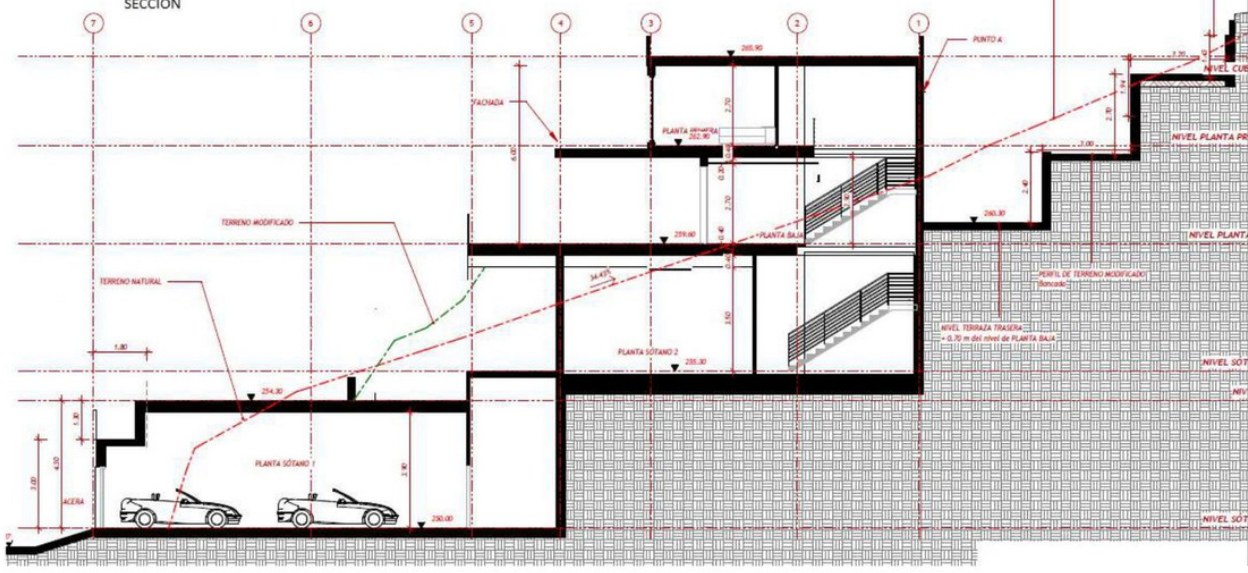
PLANTA BAJA



SÓTANO 2



SECCIÓN



SÓTANO 1

