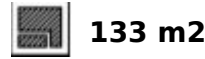


Ref.-ID: MIBGR5237698

Cancelada

Apartment

Community: 4,200 EUR / year



This brand-new, unfurnished resale penthouse offers refined contemporary living in a prime location on the New Golden Mile, just 10 minutes from both Estepona and Marbella. The property features three bright bedrooms, two elegant bathrooms plus a guest toilet, and an open-plan living area with a fully equipped high-end kitchen. Large sliding doors open onto an impressive 86 m² south-facing terrace with panoramic sea and mountain views, ideal for outdoor living year-round. High-quality finishes include underfloor heating, advanced aerothermal climate control with individual room regulation, excellent insulation, two underground parking spaces and a spacious storage room. Residents enjoy outstanding amenities such as outdoor and indoor swimming pools, spa and wellness facilities, gym, paddle courts, coworking space and 24-hour security. Located in a peaceful elevated area of Cancelada, close to beaches, promenade, shops and restaurants, this penthouse is ideal as a luxury residence or high-return investment. An exceptional opportunity on the Costa del Sol. This is a UNFURNISHED resale unit of a new developments: Luxury Penthouse, 3 Bedrooms & 86 m² Terrace - Cancelada - New Golden Mile, Estepona Stunning ready-to-move-in penthouse in this modern and elegant residence, located on the highly sought-after New Golden Mile, between Marbella and Estepona. A space where light, design, and luxury come together to offer the ultimate Costa del Sol lifestyle. Apartment Features: 3 spacious and bright bedrooms 2 designer bathrooms + guest toilet Open living room with fully equipped high-end kitchen 86 m² south-facing terrace with panoramic sea and mountain views Indoor heated swimming pool 2 underground parking spaces + large storage room Air conditioning and aerothermal heating with per-room temperature control Underfloor heating and high-quality thermal and acoustic insulation Residence Amenities: 3 outdoor pools + indoor heated pool 2 padel courts and sports areas State-of-the-art spa & wellness Fully equipped gym Coworking space with shared kitchen 24-hour security, cameras, and license plate recognition Prime Location: Quiet, elevated area in Cancelada, Estepona Just a few minutes' walk from the beach, promenade, and bike lane Only 10 minutes by car from Marbella or Estepona Why This Penthouse is Unique: Move-in ready, perfectly maintained Ideal as a luxury residence or high-yield investment Combines light, space, and comfort in one place Unique Opportunity on the Costa del Sol - Don't Miss It!

Setting

- ✓ Suburban
- ✓ Close To Golf
- ✓ Close To Shops
- ✓ Close To Sea
- ✓ Close To Schools
- ✓ Urbanisation

Climate Control

- ✓ Air Conditioning
- ✓ U/F Heating
- ✓ U/F/H Bathrooms

Kitchen

- ✓ Fully Fitted

Utilities

- ✓ Electricity
- ✓ Drinkable Water

Orientation

- ✓ South

Views

- ✓ Sea
- ✓ Mountain
- ✓ Courtyard

Garden

- ✓ Communal

Category

- ✓ Luxury
- ✓ Contemporary

Condition

- ✓ New Construction

Features

- ✓ Covered Terrace
- ✓ Lift
- ✓ Fitted Wardrobes
- ✓ Private Terrace
- ✓ Satellite TV
- ✓ WiFi
- ✓ Gym
- ✓ Paddle Tennis
- ✓ Storage Room
- ✓ Utility Room
- ✓ Ensuite Bathroom
- ✓ Access for people with reduced mobility
- ✓ Jacuzzi
- ✓ Double Glazing
- ✓ Basement
- ✓ Fiber Optic

Security

- ✓ Gated Complex
- ✓ Electric Blinds
- ✓ Entry Phone
- ✓ 24 Hour Security

Pool

- ✓ Communal
- ✓ Indoor
- ✓ Heated

Furniture

- ✓ Not Furnished

Parking

- ✓ Underground
- ✓ Garage
- ✓ Covered
- ✓ More Than One
- ✓ Communal















































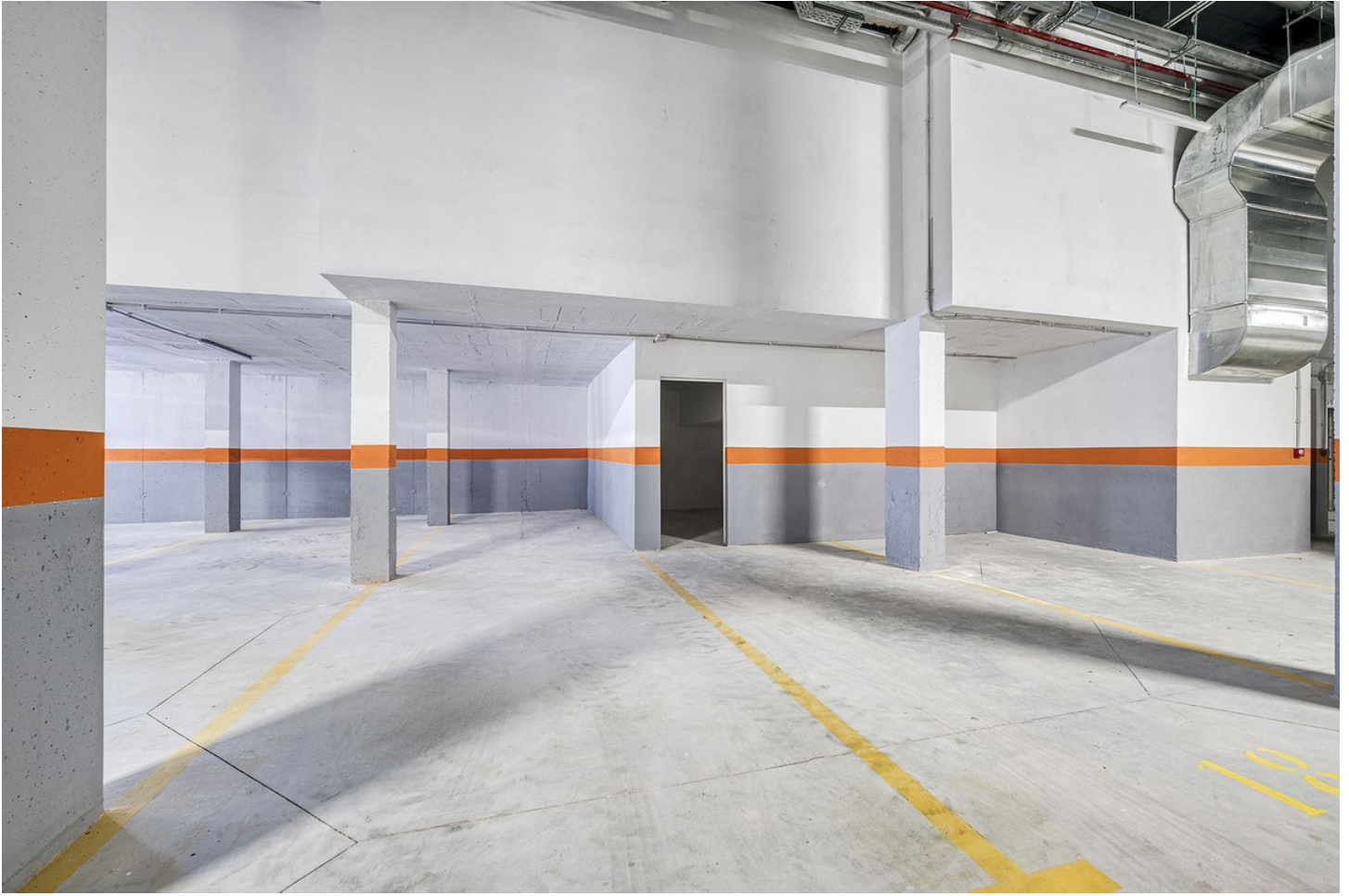












ÁTICO B

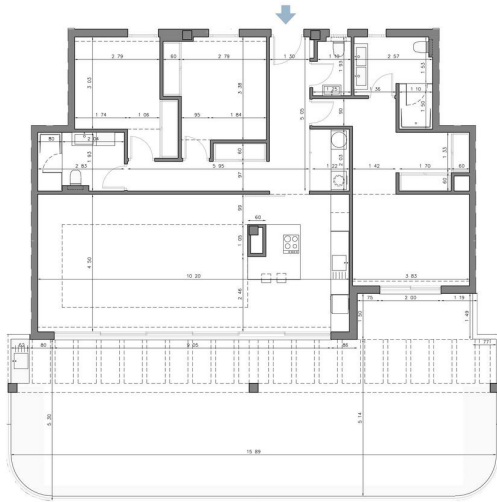
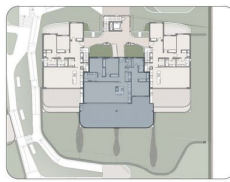
SUPERFICIES

SUPERFICIE ÚTIL VIVIENDA	117,55 m ²
SUPERFICIE ÚTIL TERRAZA	86,45 m ²

SUPERFICIE CONSTRUIDA VIVIENDA	133,23 m ²
SUPERFICIE CONSTRUIDA VIVIENDA CON P.P.Z.C.	160,89 m ²

SEGÚN DECRETO 218/2.005 JUNTA DE ANDALUCÍA

SUPERFICIE ÚTIL VIVIENDA	129,31 m ²
SUPERFICIE CONSTRUIDA VIVIENDA	172,65 m ²



ÁTICO B

SUPERFICIES

SUPERFICIE ÚTIL VIVIENDA	117,55 m ²
SUPERFICIE ÚTIL TERRAZA	86,45 m ²

SUPERFICIE CONSTRUIDA VIVIENDA	133,23 m ²
SUPERFICIE CONSTRUIDA VIVIENDA CON P.P.Z.C.	160,89 m ²

SEGÚN DECRETO 218/2.005 JUNTA DE ANDALUCÍA

SUPERFICIE ÚTIL VIVIENDA	129,31 m ²
SUPERFICIE CONSTRUIDA VIVIENDA	172,65 m ²

