

Ref.-ID: MIBGR5261305

Benalmadena

Apartment

Community: 1,584 EUR / year IBI: 945 EUR / year

Rubbish: 164 EUR / year



4



2



115 m2

Located in one of the most sought-after areas of Arroyo de la Miel, right next to the beautiful Parque de la Paloma, this 4th-floor duplex penthouse offers the perfect blend of space, comfort, and convenience. Property Features: Main Level: A spacious 22m² living-dining room opening onto a sunny southeast-facing terrace (morning sun). Separate kitchen with utility room, 1 bedroom, and 1 full bathroom. Upper Level: 3 additional bedrooms, 1 full bathroom, and 2 private terraces, perfect for sunbathing or relaxing in privacy. Amenities & Extras: Parking & Storage: Includes a private underground parking space and a storage room (essential in this area). Community: Situated in a gated complex with swimming pool and landscaped gardens. Unbeatable Location: Transport: Only 700m from the Train Station (direct line to Malaga Airport and City Center). Beach: A short 10-12 minute walk (1 km) to the sea. Lifestyle: Surrounded by schools, supermarkets, restaurants, and the award-winning Paloma Park. A secure investment for holiday rentals or a fantastic permanent family home. Contact us today to arrange a viewing!

Setting

- ✓ Town
- ✓ Commercial Area
- ✓ Beachside
- ✓ Close To Port
- ✓ Close To Shops
- ✓ Close To Sea
- ✓ Close To Schools
- ✓ Close To Forest
- ✓ Urbanisation

Climate Control

- ✓ Air Conditioning

Kitchen

- ✓ Partially Fitted

Utilities

- ✓ Electricity
- ✓ Drinkable Water

Orientation

- ✓ South East
- ✓ North West

Views

- ✓ Panoramic
- ✓ Urban

Garden

- ✓ Communal

Category

- ✓ Distressed
- ✓ Holiday Homes
- ✓ Investment

Condition

- ✓ Good

Features

- ✓ Covered Terrace
- ✓ Lift
- ✓ Fitted Wardrobes
- ✓ Near Transport
- ✓ Private Terrace
- ✓ Storage Room
- ✓ Utility Room
- ✓ Near Church

Security

- ✓ Gated Complex
- ✓ Entry Phone

Pool

- ✓ Communal

Furniture

- ✓ Part Furnished

Parking

- ✓ Underground
- ✓ Garage
- ✓ Covered
- ✓ Private





























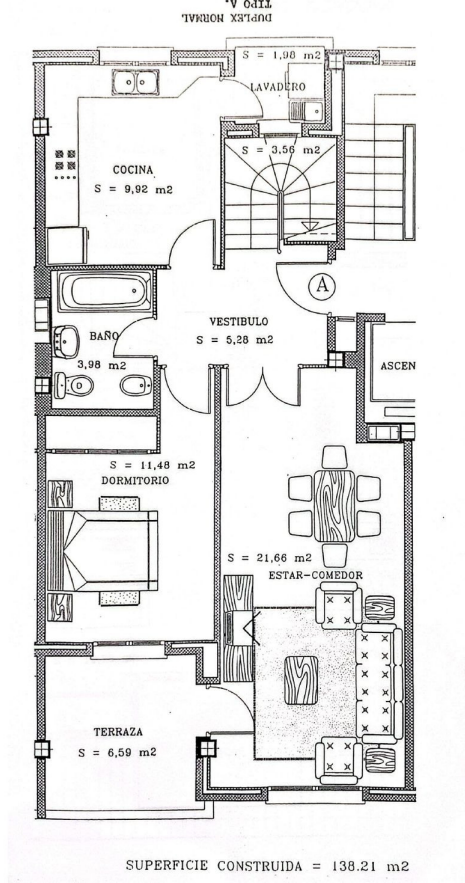




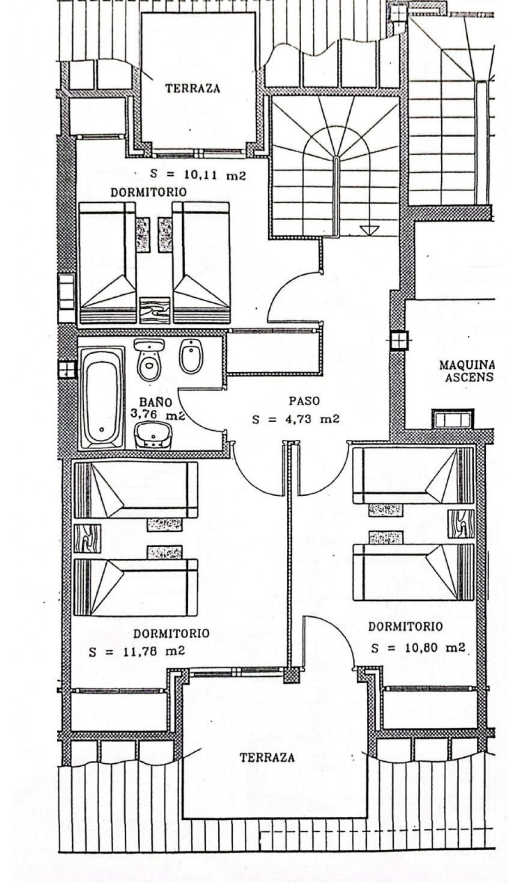








Escaneado con CamScanner



Escaneado con CamScanner