

Ref.-ID: MIBGR5264260

La Cala

Apartment

Community: 1,500 EUR / year IBI: 401 EUR / year

Rubbish: 82 EUR / year



2



2



134 m2

Looking for a spacious apartment with a west-facing terrace in a well maintained community with multiple swimming pools? We are delighted to present this immaculate first-floor, two-bedroom apartment, where both bedrooms benefit from en-suite bathrooms, offering comfort and privacy in equal measure. Located just a five-minute drive from the heart of La Cala de Mijas, the property forms part of a highly regarded residential community set within expansive landscaped grounds, complete with elegant water features. Residents enjoy access to three communal swimming pools, a concierge service, and the peace of mind provided by a 24-hour monitored CCTV security system. The apartment itself is presented in excellent condition throughout and is ready for immediate occupation. Additional features include a private underground parking space and a dedicated storage room, making this an ideal option as a permanent residence, holiday home, or investment property.

#### Setting

- ✓ Close To Golf
- ✓ Urbanisation

#### Climate Control

- ✓ Air Conditioning
- ✓ Hot A/C
- ✓ Cold A/C
- ✓ Fireplace
- ✓ U/F/H Bathrooms

#### Kitchen

- ✓ Fully Fitted

#### Utilities

- ✓ Electricity

#### Orientation

- ✓ West

#### Views

- ✓ Mountain
- ✓ Country
- ✓ Street

#### Garden

- ✓ Communal

#### Category

- ✓ Holiday Homes
- ✓ Investment
- ✓ Resale
- ✓ Contemporary

#### Condition

- ✓ Excellent

#### Features

- ✓ Covered Terrace
- ✓ Lift
- ✓ Fitted Wardrobes
- ✓ Private Terrace
- ✓ WiFi
- ✓ Storage Room
- ✓ Ensuite Bathroom
- ✓ Access for people with reduced mobility
- ✓ Marble Flooring
- ✓ Double Glazing
- ✓ Fiber Optic

#### Security

- ✓ Gated Complex
- ✓ Electric Blinds
- ✓ Entry Phone
- ✓ 24 Hour Security

#### Pool

- ✓ Communal

#### Furniture

- ✓ Not Furnished

#### Parking

- ✓ Underground

































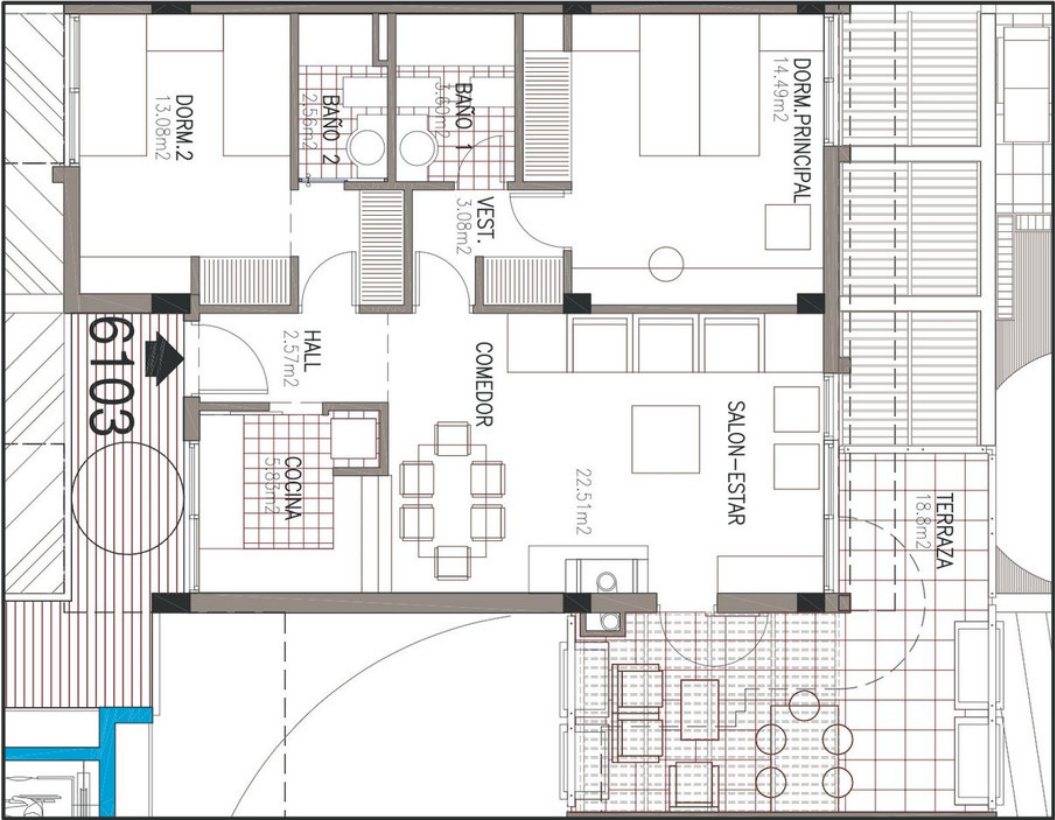












**VIVIENDA TIPO V2dt (central izquierda)**  
Escal.: Ver escala gráfica