

Ref.-ID: MIBGR5264554

Benalmadena

House



4



3



186 m2



200 m2

Discover this exceptional property located within a high-end private residential complex in one of the most privileged areas of Benalmádena. Thanks to its elevated position, the home enjoys breathtaking panoramic views of the Mediterranean Sea and coastline from every room, creating a constant sense of openness and serenity. The property is distributed over three levels plus a private rooftop solarium, all connected by a private elevator, offering maximum comfort and accessibility. Main Floor: The main level features a spacious and bright living-dining area with a modern open-plan kitchen, fully furnished and equipped. Large sliding doors lead to an impressive 58 m² terrace, combining covered and open areas—perfect for outdoor dining, relaxing, and enjoying the Mediterranean climate all year round. A guest toilet completes this floor. Upper Floor: The upper level hosts three bedrooms and two bathrooms. The master bedroom includes an en-suite bathroom, and all bedrooms have direct access to a terrace with stunning sea views, flooding the rooms with natural light. Rooftop Solarium: The private 40 m² rooftop solarium offers a unique space to unwind, with direct access to the communal swimming pool and pre-installation for a jacuzzi, making it ideal for enjoying sunsets and outdoor living. Lower Floor: On the lower level, the property includes a closed private garage for two cars, a laundry area, a full bathroom, and a large multipurpose room with natural light, perfect to be used as a fourth bedroom, home office, gym, or playroom. Additional Features: Private elevator connecting all floors Underfloor heating Aerothermal system Fully equipped kitchen Large windows and abundant natural light throughout Community Amenities Private gym Communal swimming pool with panoramic sea views This property is an ideal choice for those seeking quality, comfort, and exclusivity, offering a contemporary lifestyle in one of the most desirable locations on the Costa del Sol.

Setting

- ✓ Close To Golf
- ✓ Close To Port

Views

- ✓ Sea
- ✓ Mountain
- ✓ Country

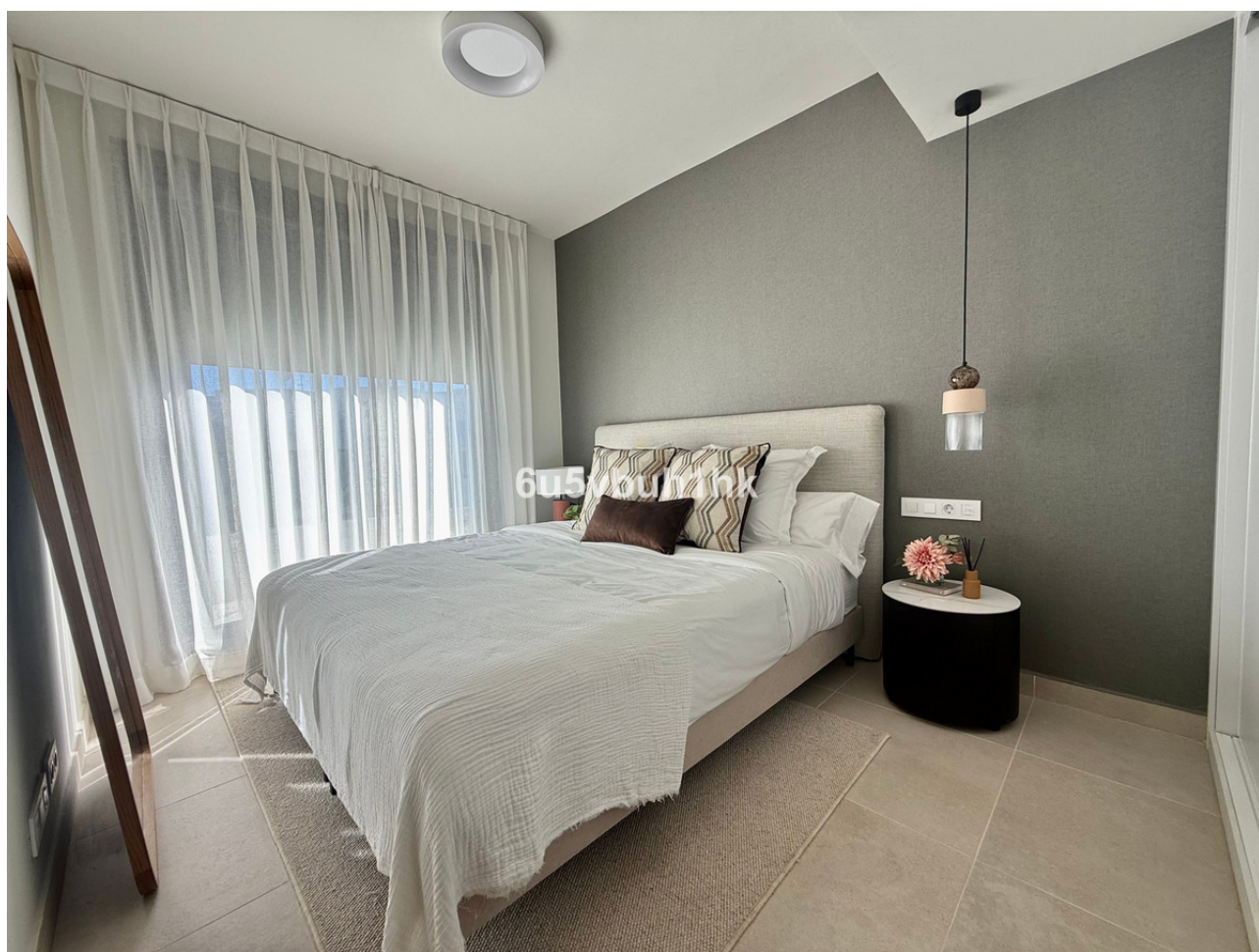
Features

- ✓ Near Transport
- ✓ Solarium
- ✓ Gym













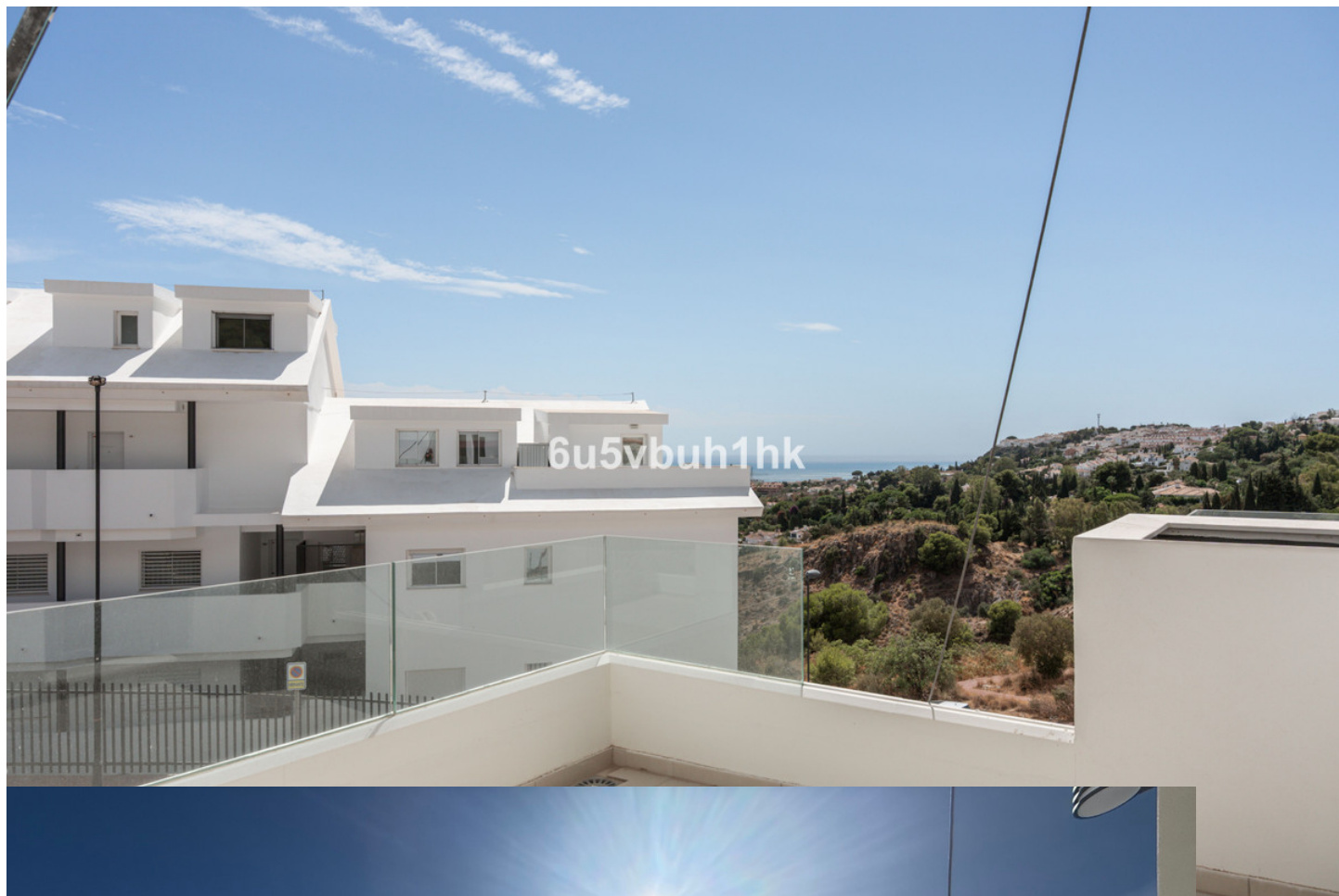


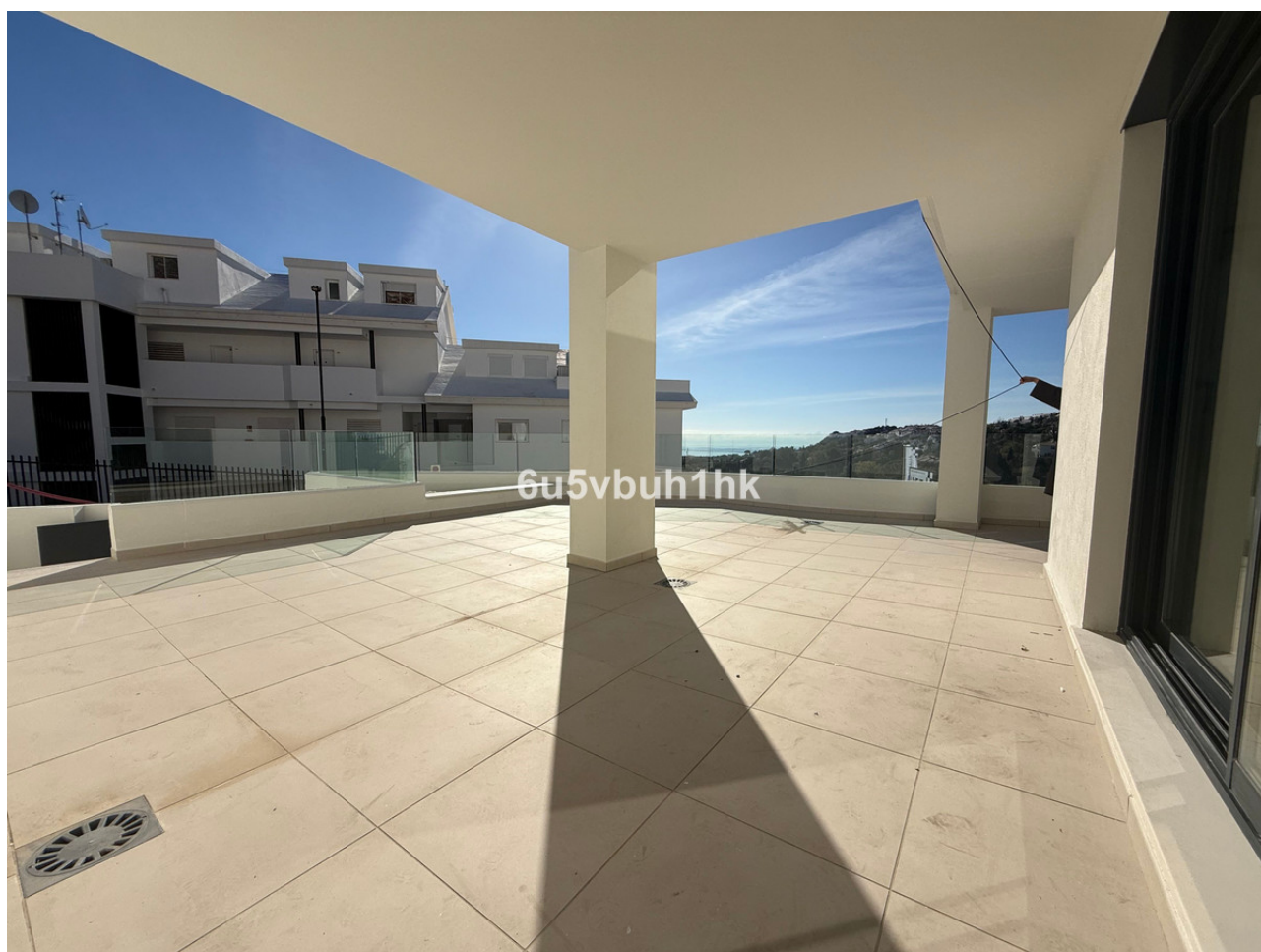






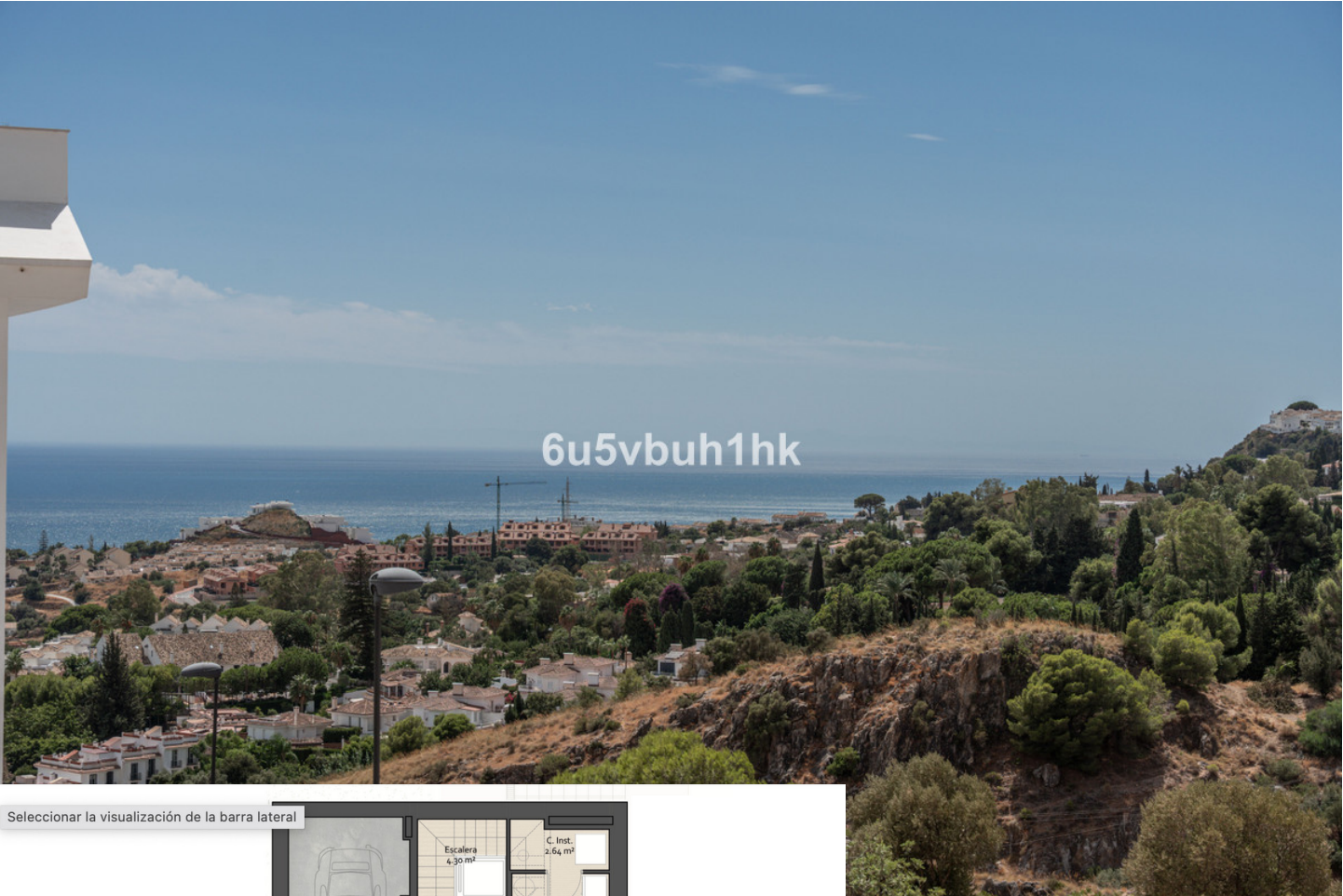












Seleccionar la visualización de la barra lateral



