

Ref.-ID: MIBGR5288329

Sierrezuela

House



5



2.5



346 m2



464 m2

Originally designed as two semi-detached homes, the property offers outstanding adaptability and lends itself effortlessly to a variety of living arrangements — whether as a refined residence for a large family, two families or an elegant multigenerational home. The house is thoughtfully arranged over two levels, with the upper floor forming the social and representative heart of the home. The main entrance opens into a welcoming hallway with a guest WC. From here, you step into a bright and inviting living room, where a fireplace adds warmth and character, and glass doors open seamlessly onto one of the terraces, overlooking the surrounding residential area. At the centre of this floor lies a spacious kitchen with an adjoining dining area, perfectly suited for both everyday family life and larger social gatherings. Through double doors, the kitchen connects to a second living room located at the opposite end of the house, offering direct access to the outdoor areas and swimming pool. A second fireplace enhances the cosy ambiance of this space. The lower level enjoys its own private entrance and is also accessible from the upper floor via two separate staircases, allowing for flexible and independent use. This floor is dedicated to rest and functionality, housing the bedrooms as well as spaces for work and household care. Currently, the layout includes three bedrooms: two comfortable children’s rooms and a generously sized master bedroom. In addition, a peaceful home office and a separate dressing room offer further versatility and can easily be converted into additional bedrooms if required. The master bedroom is complemented by a spacious, spa-inspired en-suite bathroom, while the remaining bedrooms share a second well-appointed bathroom along the hallway. A practical utility and laundry room is conveniently located next to the lower-floor entrance. Everyday comfort is further enhanced by abundant storage space, air conditioning, ceiling fans and solar panels. Outside, the home is surrounded by a private, low-maintenance tiled courtyard, enclosed by walls for privacy. Here, you will find a swimming pool, multiple terrace areas oriented to enjoy the sun throughout the day, and parking space for two vehicles. Set in a peaceful and family-friendly neighbourhood, yet within easy reach of services, schools and transport connections, this home offers an exceptional setting for family life and an effortless Mediterranean lifestyle.

Setting

- ✓ Close To Golf
- ✓ Close To Shops
- ✓ Close To Town
- ✓ Close To Schools

Views

- ✓ Country
- ✓ Pool
- ✓ Urban
- ✓ Street

Utilities

- ✓ Drinkable Water
- ✓ Solar water heating

Condition

- ✓ Good
- ✓ Recently Renovated

Features

- ✓ Covered Terrace
- ✓ Near Transport
- ✓ Private Terrace
- ✓ Ensuite Bathroom
- ✓ Double Glazing

Pool

- ✓ Private

Furniture

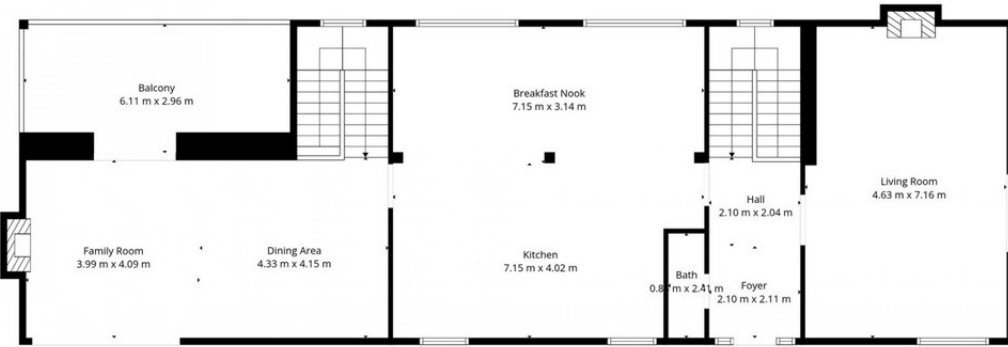
- ✓ Optional

Climate Control

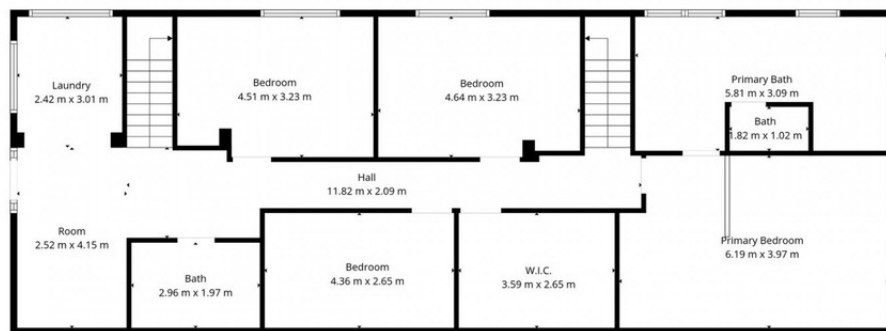
- ✓ Air Conditioning
- ✓ Fireplace

Garden

- ✓ Private



2nd Floor



1st Floor

TOTAL: 280 m2
 1st floor: 137 m2, 2nd floor: 143 m2
 EXCLUDED AREAS: LOW CEILING: 4 m2, BALCONY: 18 m2, FIREPLACE: 1 m2,
 WALLS: 16 m2

Floor Plan Created By Cubicasa App. Measurements Deemed Highly Reliable But Not Guaranteed.



























