

**Ref.-ID: MIBGR5300434**

**Elviria**

**House**



**4**



**4**



**342 m2**



**1058 m2**

Contemporary Villa with Sea Views Cumbres de Elviria · Marbella East There are homes that simply serve a purpose... and others that elevate the way you live. This villa has been conceived precisely for that: to offer space, privacy and a complete residential lifestyle in one of the most sought-after enclaves of Marbella East. Set on a private plot of 1,060 sqm, the property blends contemporary architecture, generous interior volumes and seamless connection with nature and the Mediterranean Sea. Construction & Level of Finish The villa has been fully custom-built, designed to detail and executed to the highest standards by demanding owners. This translates into: Above-standard materials. Upgraded construction solutions. High-end equipment and finishes. Bespoke architectural details. As a result, it stands as one of the most feature-rich villas in its area. Layout & Architecture The property is distributed over multiple levels connected by a private interior lift, running from the basement to the rooftop solarium. Features include: 4 spacious bedrooms. En-suite bathrooms. 2 additional guest toilets. Social Living Area The heart of the home is designed as an open-plan living environment comprising: Main living room. Integrated dining area. A wide, bright and highly functional social space enhanced by large panoramic windows with direct access to the garden and swimming pool. Private Wellness & Entertainment Area One of the property's most exclusive highlights is its private leisure level, designed as a residential resort experience: Private cinema room with panoramic screen. Surround audiovisual system. Star-ceiling lighting effect, recreating a night-sky cinematic atmosphere. Additionally, the villa offers: Fully equipped gym. Dance / fitness / wellness studio, adaptable for yoga, pilates or personal training. Outdoor Lifestyle Designed for year-round enjoyment: Private swimming pool. Garden. Pergolas. Covered terraces. Chill-out and outdoor dining areas. Views & Surroundings Open sea views. Natural green surroundings. Low-density residential environment. Maximum privacy. Golf & Strategic Location Close to renowned golf courses such as: Santa María Golf. Greenlife Golf. Cabopino Golf. Santa Clara Golf Marbella. And strategically located: Minutes from Elviria beaches. Short drive to Marbella centre. Easy access to Málaga Airport. Near shopping areas and international services.

**Setting**

- ✓ Close To Sea

**Climate Control**

- ✓ Air Conditioning
- ✓ Cold A/C
- ✓ Central Heating
- ✓ U/F Heating
- ✓ U/F/H Bathrooms

**Orientation**

- ✓ South West

**Views**

- ✓ Sea
- ✓ Country
- ✓ Garden
- ✓ Pool
- ✓ Forest

**Condition**

- ✓ Excellent

**Features**

- ✓ Covered Terrace
- ✓ Lift
- ✓ Fitted Wardrobes
- ✓ Near Transport
- ✓ Private Terrace
- ✓ Solarium
- ✓ WiFi
- ✓ Gym
- ✓ Games Room
- ✓ Storage Room
- ✓ Utility Room
- ✓ Ensuite Bathroom
- ✓ Jacuzzi
- ✓ Barbeque
- ✓ Double Glazing
- ✓ Domotics
- ✓ Restaurant On Site
- ✓ Near Mosque
- ✓ Basement

**Pool**

- ✓ Private

**Furniture**

- ✓ Part Furnished

**Kitchen**

- ✓ Fully Fitted

**Garden**

- ✓ Private

**Security**

- ✓ Electric Blinds
- ✓ Entry Phone
- ✓ Alarm System
- ✓ 24 Hour Security
- ✓ Safe

**Parking**

- ✓ Underground
- ✓ Garage

**Category**

- ✓ Luxury

































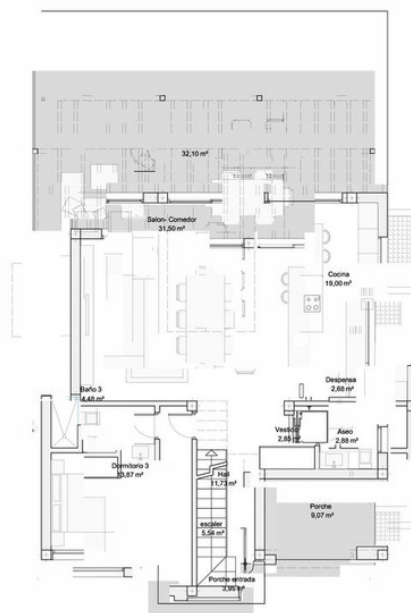
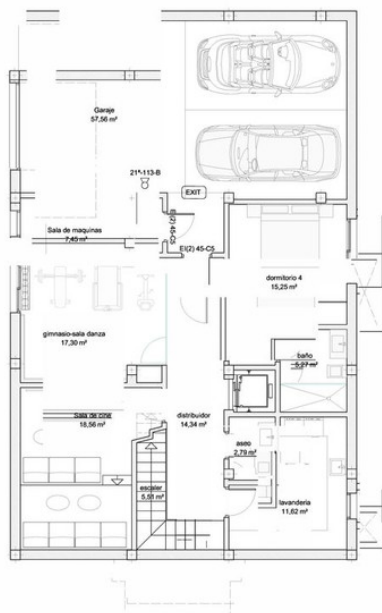








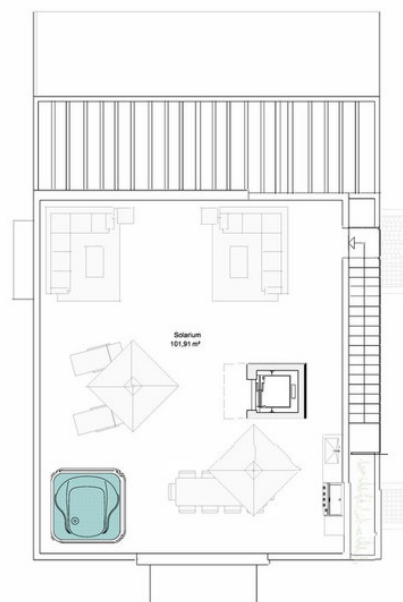
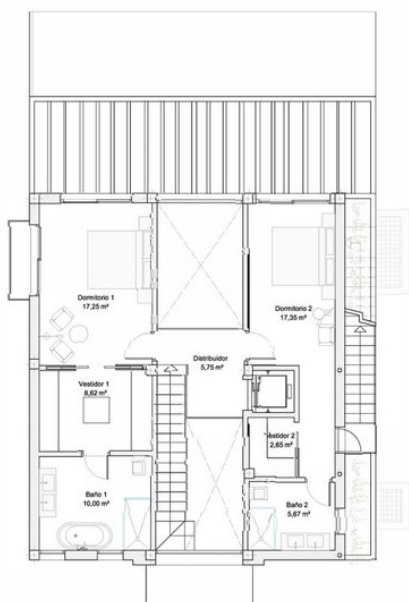




PLANO:  
PLANTA SOTANO - BAJA  
ESCALA: A1 1/50 A3 1/100

ESCALA: A3 1/50 A3 1/100

PM-01



PLANO:	PLANTA ALTA - CUBIERTA
ESCALA:	A1 1/50 A3 1/100

SCALE: A1 1/50, A3 1/100

ISSN: 0000-0000

PM-02



