



**Sales - Apartment - Torrequebrada**  
**860.000€**

**[www.mibgroup.es](http://www.mibgroup.es)**  
**+34 662 58 96 58**  
**[info@mibgroup.es](mailto:info@mibgroup.es)**

Community: 3,420 EUR / year

IBI: 925 EUR / year



3



2



141 m2

Luxury Penthouse with Panoramic Views at Golf Resort Torrequebrada. Immerse yourself in pure elegance with this exceptional penthouse of approximately 215 m<sup>2</sup>, located in the exclusive Golf Resort Torrequebrada in Benalmádena. Every detail of this home exudes comfort, space, and class — the perfect combination of Mediterranean charm and contemporary luxury. The spacious apartment offers three stylish bedrooms and two beautifully finished bathrooms. The generous living room with a fireplace creates a warm and inviting atmosphere, while the marble floors with underfloor heating and full air conditioning provide year-round comfort. From the living area, you access two impressive sun-drenched terraces offering truly breathtaking panoramic views over the golf course, the lush surroundings, and the Mediterranean Sea. It’s the ideal setting to enjoy the Costa del Sol lifestyle — from relaxing breakfasts to romantic evenings under the stars. The fully equipped kitchen is practical and designed for those who love cooking and entertaining. In addition, the property includes a double underground parking space and two large storage rooms, providing ample room for golf equipment, luggage, or seasonal items. Residents of this exclusive complex enjoy access to three beautiful swimming pools surrounded by manicured gardens — an oasis of peace and privacy, just minutes from the beach, shops, and restaurants. As an additional option, the elegant furniture and even a Kia vehicle can be acquired separately, making this a truly complete and move-in-ready home. A rare opportunity for those seeking space, luxury, and stunning views — all within one of the most prestigious golf resorts on the Costa del Sol

**Setting**

- ✓ Close To Golf
- ✓ Close To Shops
- ✓ Close To Sea
- ✓ Close To Town
- ✓ Close To Schools

**Orientation**

- ✓ South
- ✓ South West

**Condition**

- ✓ Excellent

**Pool**

- ✓ Communal

**Climate Control**

- ✓ Air Conditioning
- ✓ Hot A/C
- ✓ Fireplace
- ✓ U/F Heating
- ✓ U/F/H Bathrooms

**Views**

- ✓ Mountain
- ✓ Panoramic
- ✓ Garden
- ✓ Pool

**Features**

- ✓ Covered Terrace
- ✓ Lift
- ✓ Fitted Wardrobes
- ✓ Near Transport
- ✓ Private Terrace
- ✓ Storage Room
- ✓ Utility Room
- ✓ Ensuite Bathroom
- ✓ Access for people with reduced mobility
- ✓ Marble Flooring
- ✓ Double Glazing

**Furniture**

- ✓ Optional

**Kitchen**

- ✓ Fully Fitted

**Garden**

- ✓ Communal

**Security**

- ✓ Gated Complex
- ✓ Electric Blinds
- ✓ Entry Phone

**Parking**

- ✓ Underground
- ✓ More Than One

**Utilities**

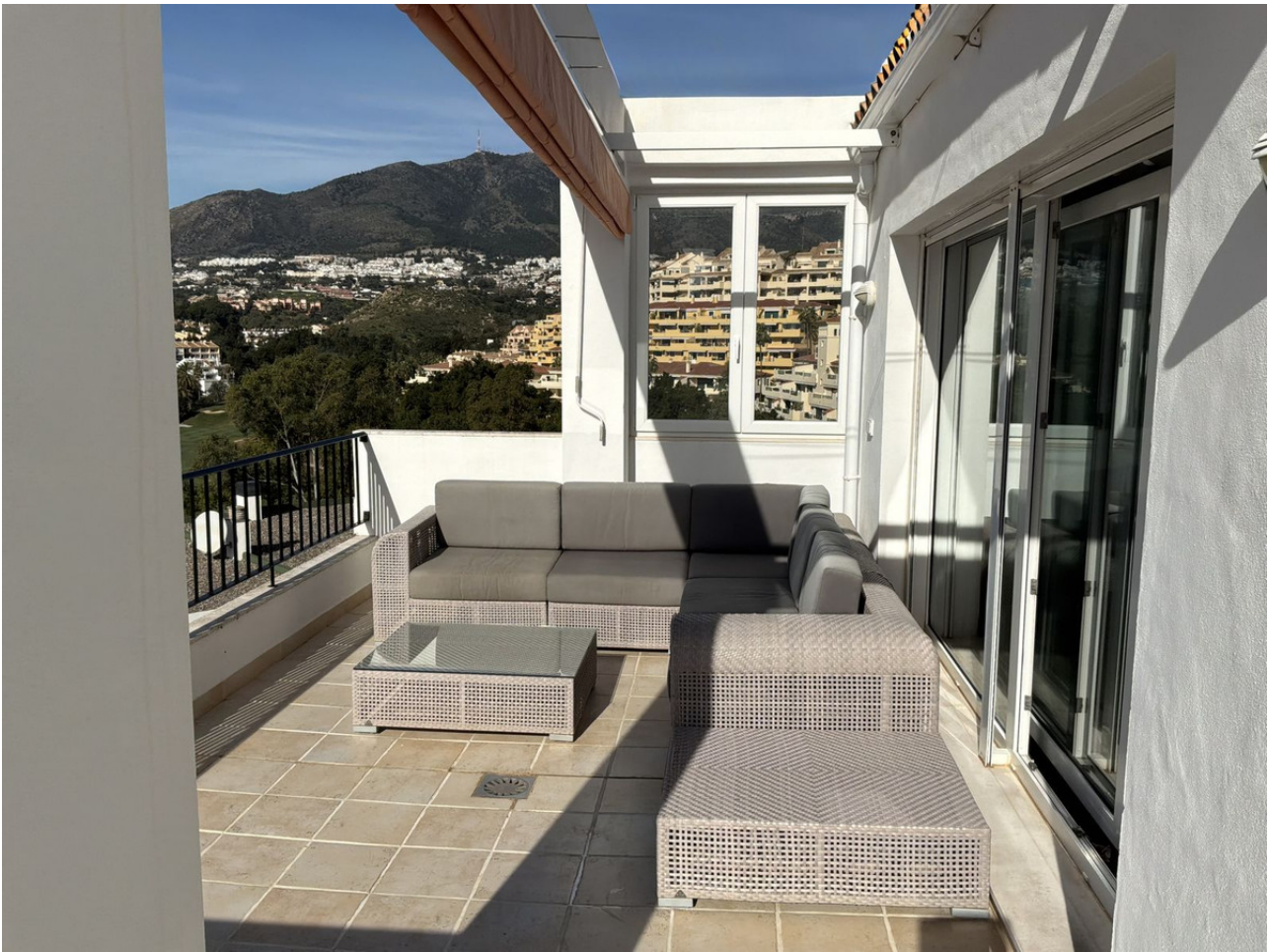
- ✓ Electricity

**Category**

- ✓ Holiday Homes
- ✓ Luxury
- ✓ Resale









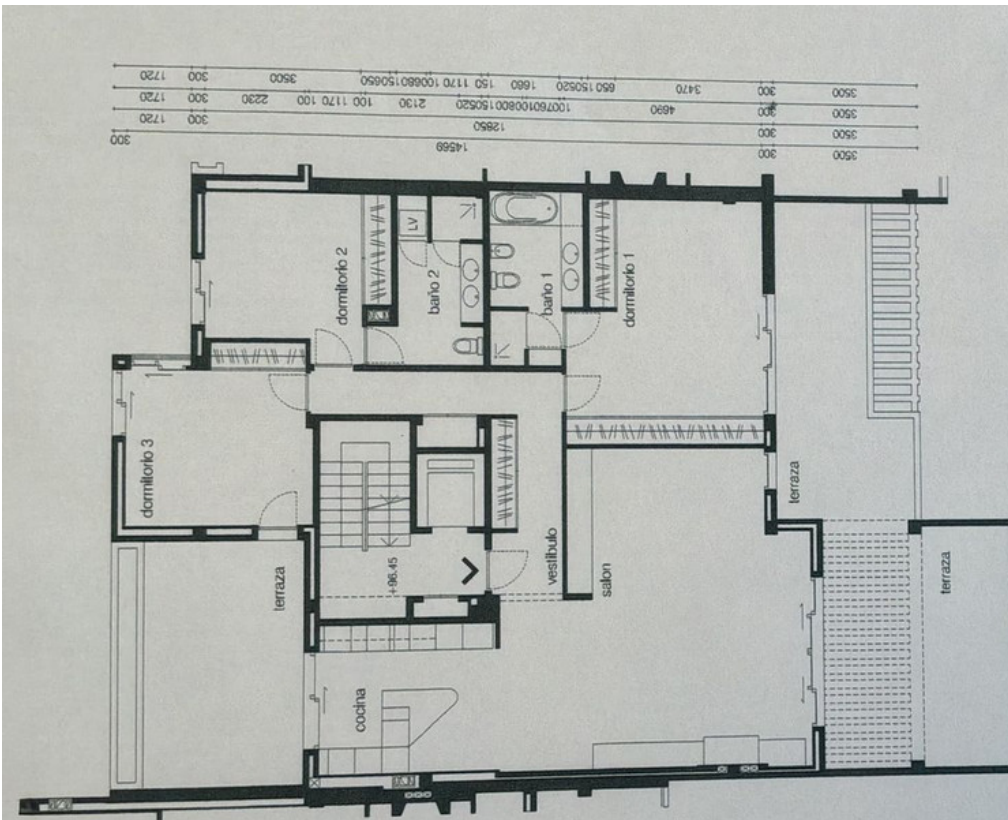












3500	300	14559	300	3500
3500	300	100750100800150630	4690	3470
3500	300	650150520	1660	150
3500	300	100860150690	3500	500
1720	300			1720

