

Ref.-ID: MIBGR5310997

Riviera del Sol

Plot



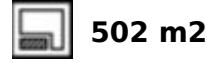
4



6



435 m2



502 m2

A unique plot of land with panoramic sea views is for sale in Riviera del Sol (Mijas), one of the most sought-after residential areas on the Costa del Sol. The plot includes a valid building permit and a luxury villa plan, allowing construction to begin immediately and avoiding the lengthy administrative delays typical in this area (the permitting process took almost three years). The plot enjoys a privileged location, being one of the last remaining plots with unobstructed sea views, further guaranteed by the surrounding green space, preventing any future development that might obstruct it. Strategically located near exit 200 of the AP-7 motorway, it offers excellent transport links between Marbella and Fuengirola and is just minutes from beaches, golf courses, international schools, services, and shopping centers. The project includes the construction of a high-end contemporary villa, designed for maximum privacy, with southwest orientation and stunning views. It features spacious interiors and exteriors, a swimming pool, terraces, and recreation areas. Ideal for developers, luxury property buyers, or investors seeking a unique property with high potential in a well-established area.

Setting

- ✓ Close To Golf
- ✓ Close To Shops
- ✓ Close To Sea
- ✓ Close To Town
- ✓ Close To Schools

Climate Control

- ✓ Air Conditioning
- ✓ Central Heating

Garden

- ✓ Private

Orientation

- ✓ South West

Views

- ✓ Sea
- ✓ Mountain
- ✓ Country
- ✓ Panoramic
- ✓ Garden
- ✓ Urban

Security

- ✓ Alarm System

Condition

- ✓ Excellent

Features

- ✓ Near Transport
- ✓ Private Terrace
- ✓ Games Room
- ✓ Storage Room
- ✓ Utility Room
- ✓ Ensuite Bathroom

Parking

- ✓ More Than One
- ✓ Private

Pool

- ✓ Private

Kitchen

- ✓ Kitchen-Lounge

Category

- ✓ Luxury







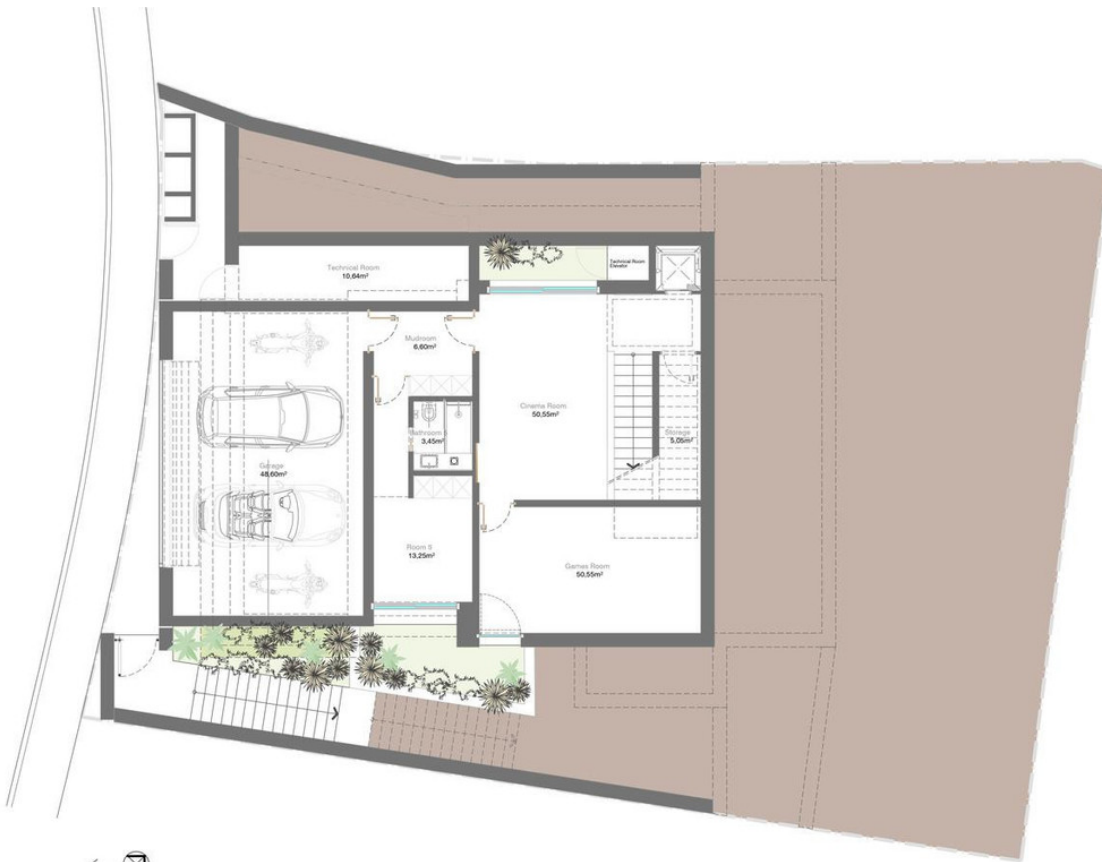




*This document is for information only. The areas and dimensions shown are approximate and can be modified for technical reasons and/or administrative issues.



*This document is for information only. The areas and dimensions shown are approximate and can be modified for technical reasons and/or administrative issues.



*This document is for information only. The areas and dimensions shown are approximate and can be modified for technical reasons and/or administrative issues.