

**Ref.-ID: MIBGR5317216**

**La Quinta**

**Apartment**

**Community: 4,188 EUR / year IBI: 807 EUR / year**

**Rubbish: 18 EUR / year**



Duplex Penthouse with Panoramic Sea & Golf Views – Urb. Altos de La Quinta Welcome to this exceptional 3-bedroom duplex penthouse in Urb. Altos de La Quinta, offering breathtaking panoramic sea views, frontline vistas over La Quinta Golf Course, La Concha and a prime location right next to the prestigious The Westin La Quinta Golf Resort & Spa. Main Level The entrance level features a bright and spacious open-plan layout combining the living area and modern kitchen, designed to maximize natural light and views. Two generous double bedrooms One full bathroom One guest toilet Direct access to terraces with stunning sea and golf views The seamless indoor–outdoor flow makes this level perfect for both everyday living and entertaining. Upper Level – Private Master Suite & Spectacular Roof Terrace Upstairs you’ll find the impressive master suite, offering complete privacy and luxury: Spacious master bedroom En-suite bathroom with sea views Walk-in wardrobe This level also provides access to a huge private roof terrace, a true highlight of the property. Designed for enjoying the Costa del Sol lifestyle, it includes: Outdoor shower Storage room Ample space for dining, lounging, and sunbathing Uninterrupted panoramic views of the Mediterranean and golf course Additional Features 1 outdoor parking space Elevated position ensuring privacy and open views Lift Quiet and exclusive residential area This penthouse is ideal as a permanent residence, luxury holiday home, or high-end investment property in one of the most sought-after golf areas on the Costa del Sol. A rare opportunity to own a property combining privacy, views, and proximity to golf, and 5-star amenities.

**Setting**

- ✓ Close To Golf
- ✓ Close To Shops
- ✓ Close To Town
- ✓ Close To Schools

**Climate Control**

- ✓ Air Conditioning
- ✓ U/F/H Bathrooms

**Garden**

- ✓ Communal

**Orientation**

- ✓ South

**Views**

- ✓ Sea
- ✓ Mountain
- ✓ Golf
- ✓ Country
- ✓ Panoramic

**Security**

- ✓ Alarm System

**Condition**

- ✓ Excellent
- ✓ Recently Renovated

**Features**

- ✓ Covered Terrace
- ✓ Lift
- ✓ Fitted Wardrobes
- ✓ Private Terrace
- ✓ Solarium
- ✓ Storage Room
- ✓ Utility Room
- ✓ Barbeque

**Parking**

- ✓ Private

**Pool**

- ✓ Communal

**Furniture**

- ✓ Optional



























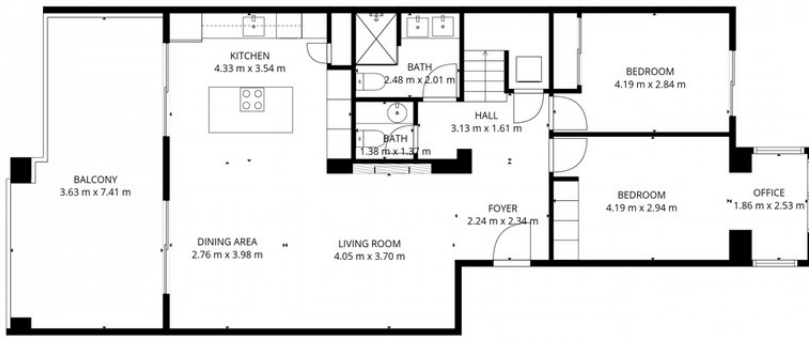




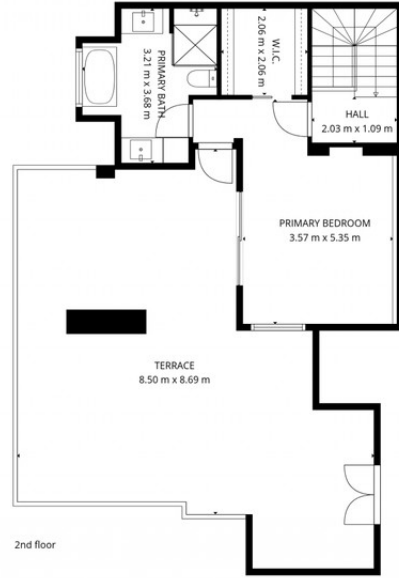








1st floor



2nd floor

**TOTAL: 133 m<sup>2</sup>**  
 1st floor: 94 m<sup>2</sup>, 2nd floor: 39 m<sup>2</sup>  
 EXCLUDED AREAS: BALCONY: 24 m<sup>2</sup>, TERRACE: 58 m<sup>2</sup>, WALLS: 13 m<sup>2</sup>

FLOOR PLAN CREATED BY CUBICASA APP. MEASUREMENTS DEEMED HIGHLY RELIABLE BUT NOT GUARANTEED.

