

Ref.-ID: MIBGR5332414

Torrequebrada

Apartment

Community: 2,904 EUR / year IBI: 900 EUR / year

Rubbish: 164 EUR / year



Stunning Penthouse with private roof top terrace for sale in Benalmádena Torrequebrada * With touristic rental license and 3 bedrooms & 3 bathrooms this is a great option for your new (holiday)home or investment property. Open-plan kitchen connected to the living room. Spacious west facing afternoon/evening sun terrace with access from the living room and two bedrooms. Private rooftop terrace with sun all day with stairs leading up from the main terrace. Beautiful communal pool area and private parking space in the underground garage with elevator access directly to the apartments floor. Storage room. The location is excellent. Only 400 m from the beach, Yucas café-restaurant & casino. Lidl and some restaurants in 500 m. Trocadero restaurant in 1 km. Torremuelle train station - 2.1 km and Málaga Airport - 16 km. Contact us and let's view this great penthouse where you can enjoy the Mediterranean climate and views to the fullest.

Setting

- ✓ Beachfront
- ✓ Beachside
- ✓ Close To Golf
- ✓ Close To Sea
- ✓ Close To Schools
- ✓ Urbanisation

Orientation

- ✓ South
- ✓ South West
- ✓ West

Condition

- ✓ Good

Pool

- ✓ Communal

Climate Control

- ✓ Air Conditioning
- ✓ Hot A/C
- ✓ Cold A/C
- ✓ Central Heating

Views

- ✓ Sea
- ✓ Mountain
- ✓ Panoramic

Features

- ✓ Lift
- ✓ Fitted Wardrobes
- ✓ Near Transport
- ✓ Private Terrace
- ✓ Solarium
- ✓ WiFi
- ✓ Storage Room
- ✓ Ensuite Bathroom
- ✓ Double Glazing
- ✓ Fiber Optic

Furniture

- ✓ Fully Furnished

Kitchen

- ✓ Fully Fitted

Garden

- ✓ Communal

Security

- ✓ Gated Complex
- ✓ Entry Phone
- ✓ Alarm System

Parking

- ✓ Underground
- ✓ Garage
- ✓ Covered
- ✓ Private

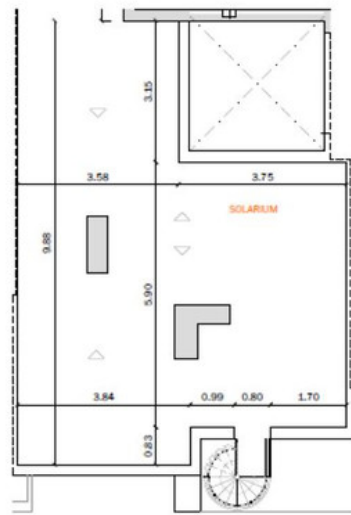
Utilities

- ✓ Electricity
- ✓ Drinkable Water

Category

- ✓ Beachfront
- ✓ Golf
- ✓ Holiday Homes
- ✓ Resale
- ✓ Contemporary





- BAÑO 2
- BAÑO 3
- BAÑO PRINCIPAL
- COCINA
- DISTRIBUIDOR
- DORMITORIO 2
- DORMITORIO 3
- DORMITORIO PRINCIPAL
- ENTRADA
- SALON-COMEDOR

- Sup. útil
- Sup. útil Dec. 218/2005
- Sup. construida neta
- Sup. construida total
- Sup. Terraza Cubierta
- Sup. Terraza Descubierta
- Sup. Solarium



























