

Ref.-ID: MIBGR5353453

Coín

House

IBI: 524 EUR / year

Rubbish: 134 EUR / year



3



2



151 m2



4594 m2

Looking for peace and space, yet close to everything? This detached country house is the perfect blend of rural living and modern convenience. Located just a 5-minute drive from the vibrant town of Coín and only 30 minutes from Málaga city and the airport, it offers an ideal balance between tranquillity and accessibility. Inside, the home welcomes you with a bright, open-plan living, dining, and kitchen area – perfect for family life and entertaining. On the ground floor, you'll find two comfortable bedrooms and a full bathroom, while upstairs is reserved for a private master suite with a generous bedroom and a spacious ensuite bathroom. Step outside and enjoy your very own swimming pool, brick-built barbecue area, and storeroom, which is everything you need for long summer days with family and friends. This is the kind of home that gives you room to breathe, space to grow, and a lifestyle to enjoy. The property sits on 1,500m² of land directly around the house, with an additional 3,000m² plot just across the road. This extra land offers exciting potential – whether you dream of keeping a horse, growing your own fruit trees, or creating a hobby garden. Mains water and electricity connected. Plenty of space for country living. A short drive to shops, restaurants, and amenities.

Setting

- ✓ Country
- ✓ Close To Town

Climate Control

- ✓ Air Conditioning
- ✓ Fireplace

Kitchen

- ✓ Fully Fitted

Category

- ✓ Resale

Orientation

- ✓ South

Views

- ✓ Country

Garden

- ✓ Private

Condition

- ✓ Good

Features

- ✓ Covered Terrace
- ✓ Fitted Wardrobes
- ✓ Private Terrace
- ✓ Storage Room
- ✓ Ensuite Bathroom
- ✓ Double Glazing

Parking

- ✓ Open
- ✓ More Than One
- ✓ Private

Pool

- ✓ Private

Furniture

- ✓ Optional

Utilities

- ✓ Electricity
- ✓ Drinkable Water



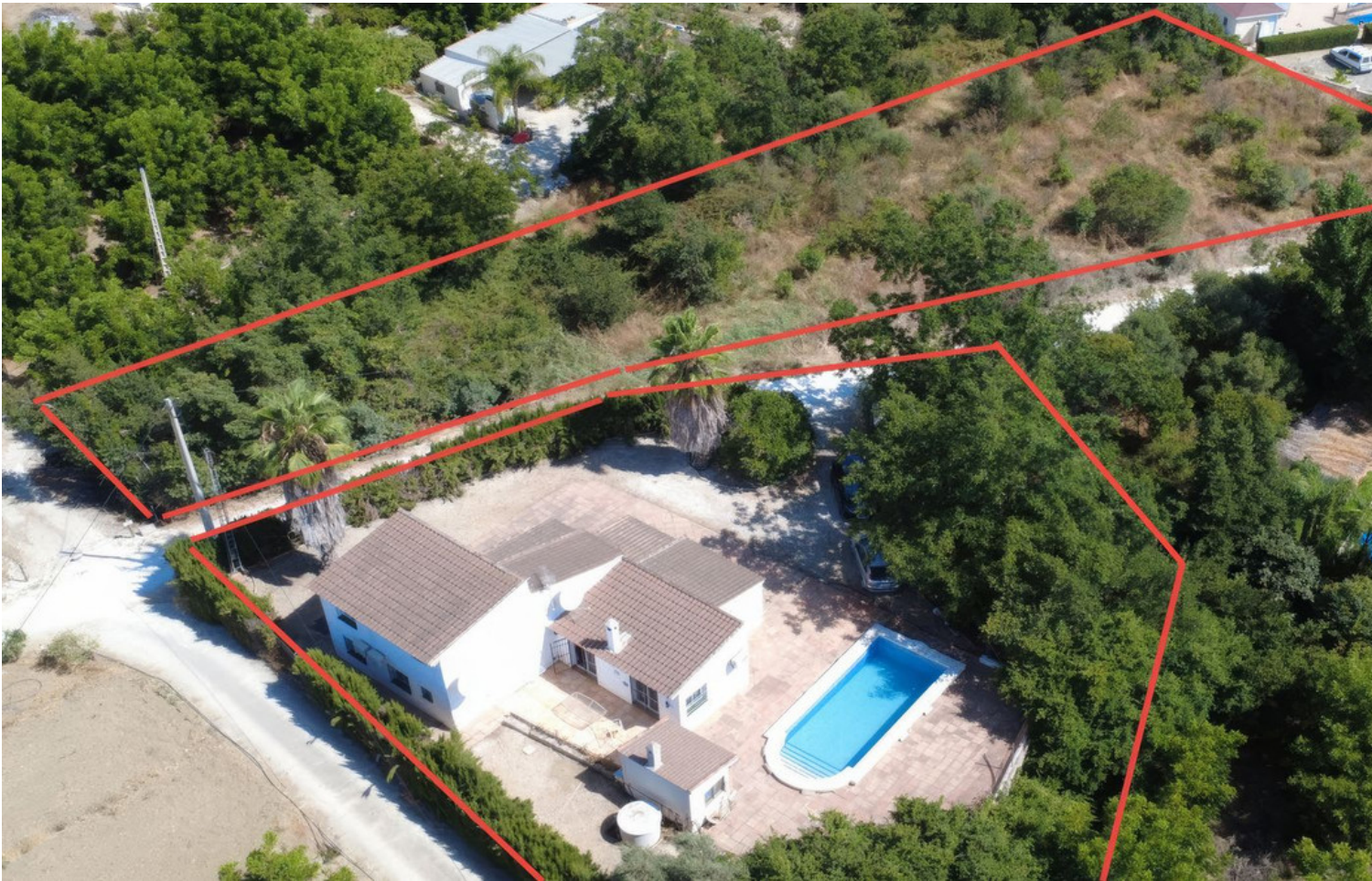








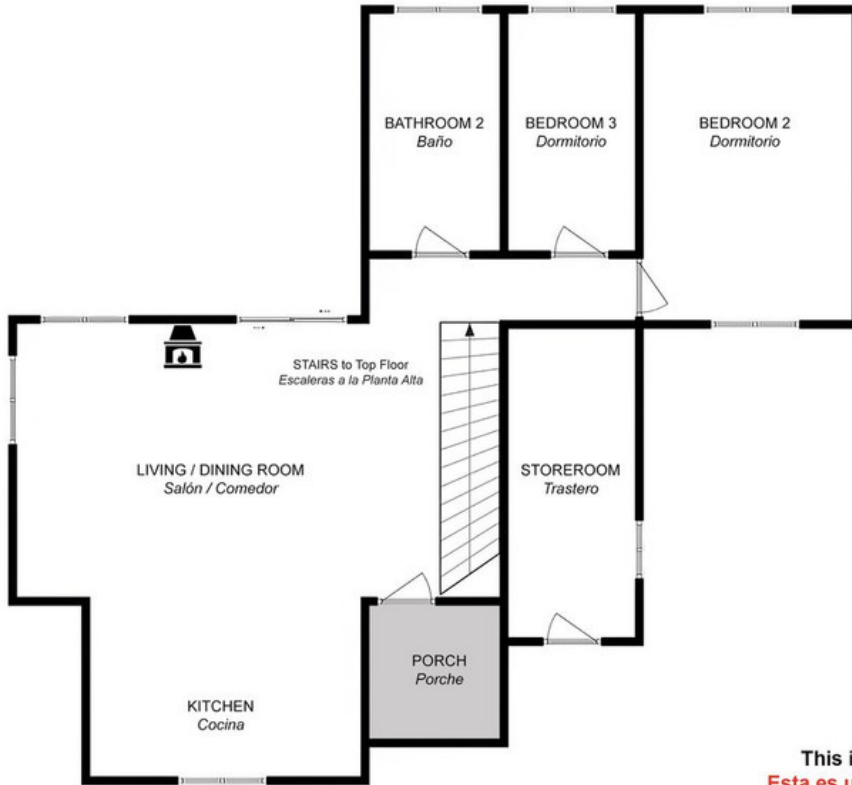




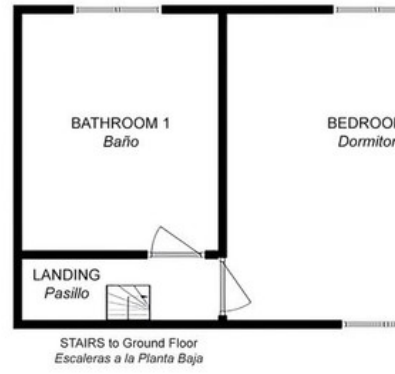




GROUND FLOOR
Planta Baja



TOP FLOOR
Planta Alta



This is a representation of the layout of the property and it is not
Esta es una representación de la distribución de la propiedad y no es