

Ref.-ID: MIBGR5354083

Benahavís

Apartment



3



3



240 m2



57 m2

Spacious Duplex Apartment with Large Terrace and Private Outdoor Space in Benahavís Discover this exceptionally spacious duplex apartment located in the green and quiet Benahavís. This home combines modern architecture with generous living spaces and impressive outdoor areas, ideal for those who love comfort, privacy, and the Mediterranean outdoor lifestyle. The home is spread over two levels, ensuring a pleasant separation between the living and sleeping areas. Refined Interior & Comfort Upon entering, you are welcomed into a bright living space with an open layout. The living room and dining area connect seamlessly to the terraces, allowing the indoors and outdoors to flow perfectly into one another. Three Spacious Bedrooms: The master bedroom features an en-suite bathroom and direct access to the outdoors. The other bedrooms are spacious and ideal for guests or family. Modern Open Kitchen: Fully integrated into the living space, with a sleek design and a direct connection to the dining and seating area. The Ultimate Outdoor Living The outdoor spaces are one of the greatest assets of this property. Large Main Terrace: Perfect for dining, relaxing, and enjoying the view. Additional Outdoor Space / Garden Zone: The duplex layout offers additional outdoor space, ideal for a lounge, play area, or extra privacy. Features Location: Benahavís (quiet, green, and exclusive area) Layout: 3 bedrooms 3 bathrooms Duplex (2 levels) Spacious open living area Surfaces: Interior space: 132.89 m² Terrace: 35.56 m² Garden: 57.20 m² Additional space: 31.60 m² Extras: Includes garage and storage Plenty of privacy Panoramic view Price: €995,000 (excl. furniture)

Setting

- ✓ Urbanisation

Climate Control

- ✓ Air Conditioning
- ✓ Central Heating

Kitchen

- ✓ Fully Fitted

Utilities

- ✓ Drinkable Water

Orientation

- ✓ South East

Views

- ✓ Sea
- ✓ Mountain

Garden

- ✓ Private

Condition

- ✓ Good

Features

- ✓ Covered Terrace
- ✓ Private Terrace
- ✓ Gym
- ✓ Double Glazing

Security

- ✓ Gated Complex
- ✓ 24 Hour Security

Pool

- ✓ Communal

Furniture

- ✓ Fully Furnished

Parking

- ✓ Underground









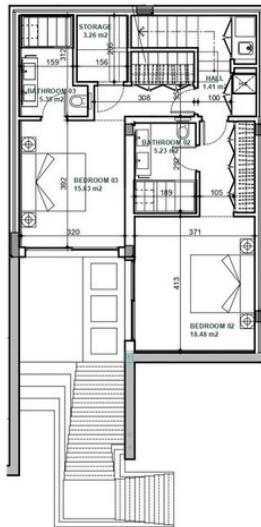






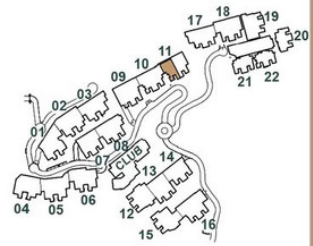


APARTMENT 11.0.A
LOWER LEVEL
3 BEDROOMS

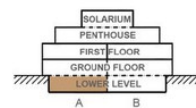


E: 1/100

Site Plan



Block 11



Apartment 11.0.A

Apartment area	132.89 m ²
Terrace	35.56 m ²
Extra area	31.60 m ²
Usable Area	200.05 m²
Apartment area	167.58 m ²
Terrace	35.99 m ²
Extra area	36.38 m ²
Constructed Area	239.95 m²
Common Area	23.91 m ²
Garden	57.20 m ²
Tiled	100.00 m ²



Marbella Club Hills · BENAHAVIS

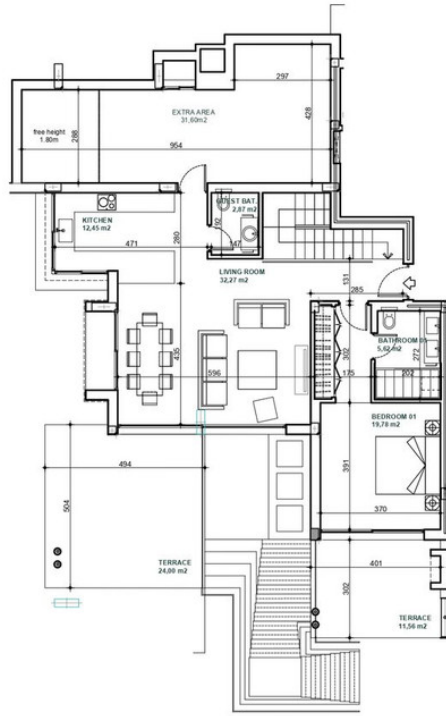
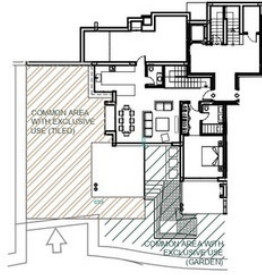


This document is for information only. The areas and measurements shown are approximate and may be modified for technical reasons and/or administrative issues. All furniture shown is for illustrative purposes.

This document is for information only. The areas and measurements shown are approximate and may be modified for technical reasons and/or administrative issues. All furniture shown is for illustrative purposes.

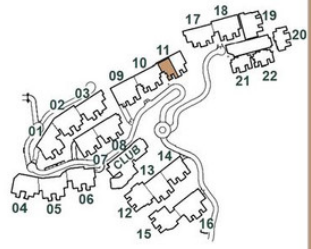


APARTMENT 11.0.A
UPPER LEVEL
3 BEDROOMS

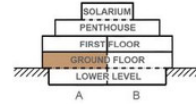


E: 1/100

Site Plan



Block 11



Apartment 11.0.A

Apartment area	132.89 m ²
Terrace	35.56 m ²
Extra area	31.60 m ²
Usable Area	200.05 m²
Apartment area	167.58 m ²
Terrace	35.99 m ²
Extra area	36.38 m ²
Constructed Area	239.95 m²
Common Area	23.91 m ²
Garden	57.20 m ²
Tiled	100.00 m ²



BENAHAVIS

Marbella Club Hills

