



Sales - House - Hacienda Las Chapas
3.750.000€

www.mibgroup.es
+34 662 58 96 58
info@mibgroup.es

Ref.-ID: MIBGR5354932

Hacienda Las Chapas

House



5



5



727 m2



1969 m2

Exclusive Designer Villa - Hacienda Las Chapas, Marbella Located on a 1.969 m² urban plot in one of the most established and prestigious areas of Marbella East, this extraordinary villa under construction represents a perfect combination of contemporary architecture, privacy, and a premium lifestyle. Designed to maximize light, space, and a connection with the surrounding environment, the home is distributed over two floors, featuring spacious open-plan living areas, large windows, and a seamless integration of indoors and outdoors. The project includes five large bedrooms, including a generously sized master suite, several living areas, a private gym, service areas, and an elegant central staircase as a key architectural feature. The exterior offers landscaped gardens, terraces, a private pool, and areas designed for relaxation and entertainment, all within a tranquil and secure residential setting surrounded by nature, just minutes from the best beaches, international schools, the center of Marbella, and Málaga International Airport (20 minutes away). A property designed for those seeking exclusivity, design, and long-term value in one of the most sought-after locations on the Costa del Sol. Delivery 1st semester 2028

Setting

- ✓ Beachside
- ✓ Close To Golf
- ✓ Close To Sea
- ✓ Close To Schools
- ✓ Close To Forest

Climate Control

- ✓ Air Conditioning
- ✓ Central Heating
- ✓ Fireplace
- ✓ U/F Heating

Kitchen

- ✓ Fully Fitted

Utilities

- ✓ Electricity
- ✓ Drinkable Water
- ✓ Telephone
- ✓ Photovoltaic solar panels
- ✓ Solar water heating

Orientation

- ✓ South
- ✓ South West

Views

- ✓ Sea
- ✓ Mountain

Garden

- ✓ Private
- ✓ Landscaped

Category

- ✓ Golf
- ✓ Luxury
- ✓ Off Plan
- ✓ With Planning Permission

Condition

- ✓ Excellent

Features

- ✓ Covered Terrace
- ✓ Lift
- ✓ Fitted Wardrobes
- ✓ Near Transport
- ✓ Private Terrace
- ✓ Solarium
- ✓ Satellite TV
- ✓ WiFi
- ✓ Gym
- ✓ Sauna
- ✓ Games Room
- ✓ Guest House
- ✓ Storage Room
- ✓ Utility Room
- ✓ Ensuite Bathroom
- ✓ Access for people with reduced mobility
- ✓ Marble Flooring
- ✓ Jacuzzi
- ✓ Bar
- ✓ Barbeque
- ✓ Double Glazing
- ✓ Domotics
- ✓ 24 Hour Reception
- ✓ Courtesy Bus
- ✓ Day Care
- ✓ Basement
- ✓ Fiber Optic

Security

- ✓ Electric Blinds
- ✓ Entry Phone
- ✓ Alarm System
- ✓ 24 Hour Security
- ✓ Safe

Pool

- ✓ Private
- ✓ Heated

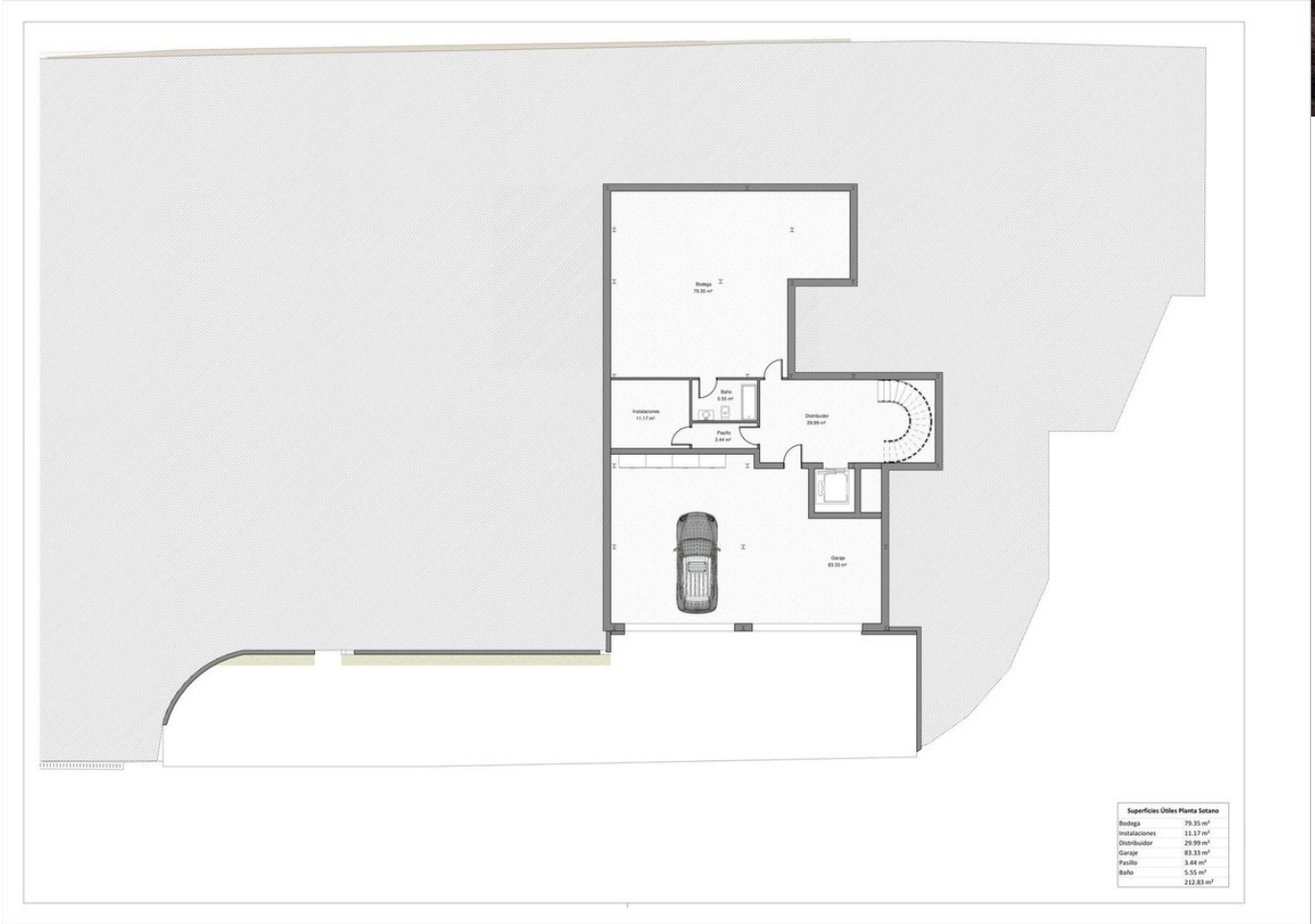
Furniture

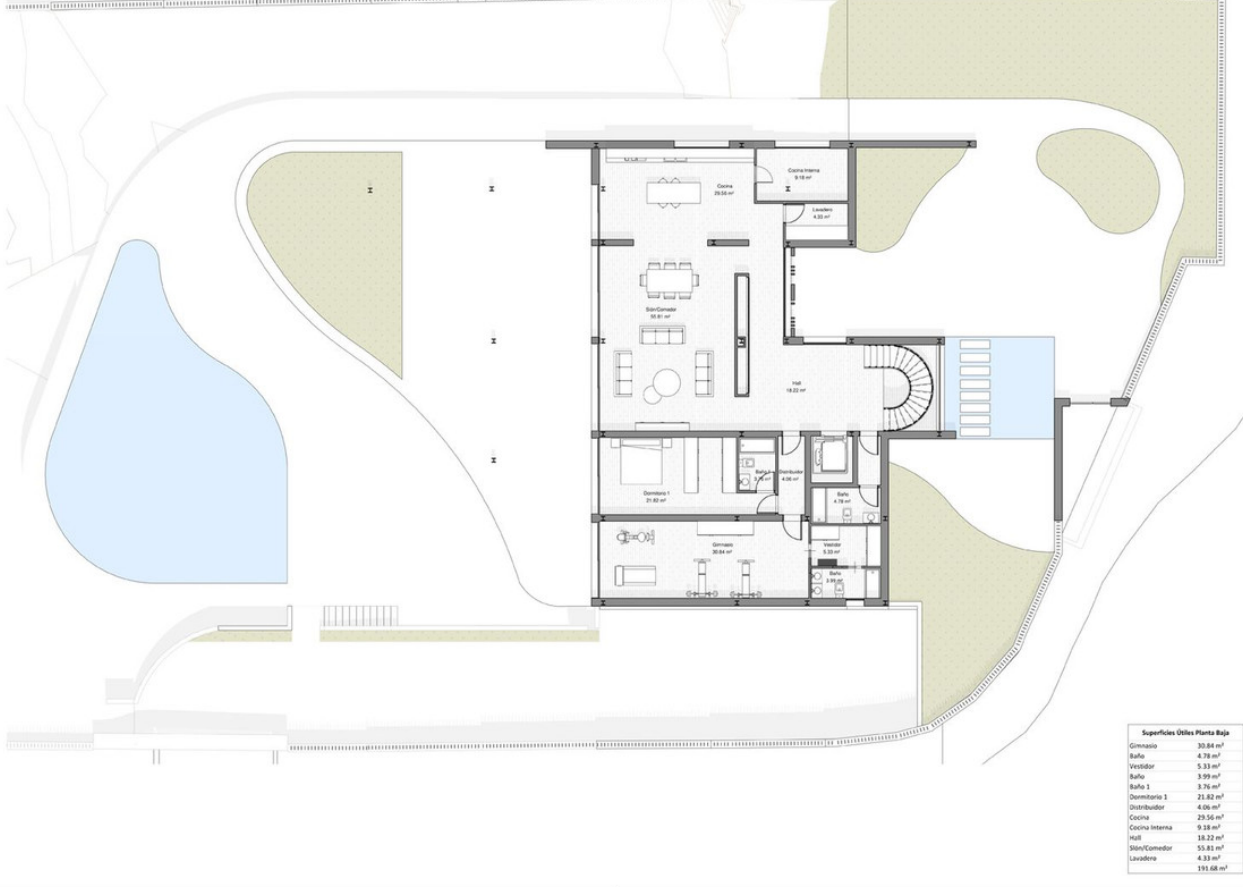
- ✓ Not Furnished

Parking

- ✓ Underground
- ✓ Garage
- ✓ More Than One
- ✓ Private

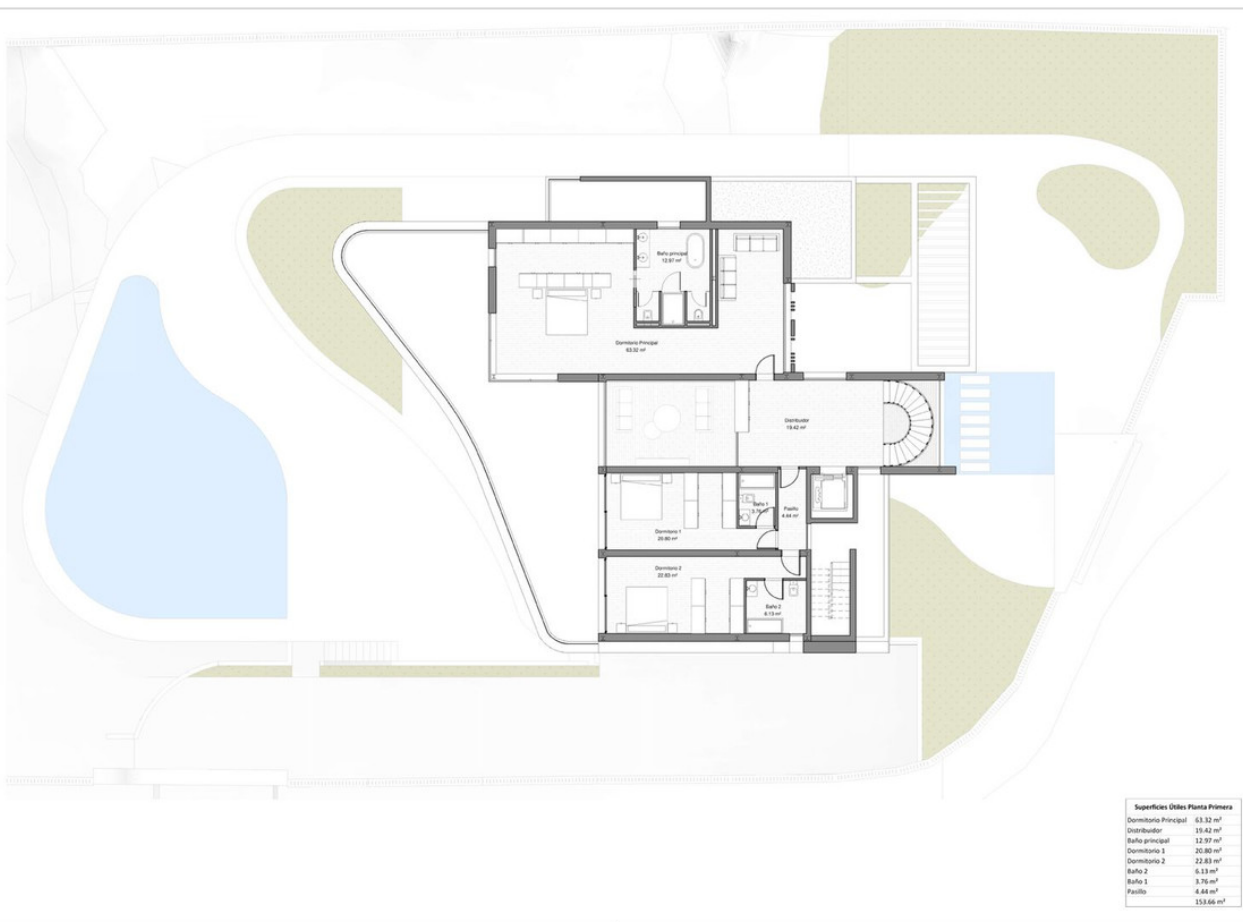






Superficies Útiles Planta Baja

Gimnasio	30.84 m ²
Baño	4.79 m ²
Trastero	5.33 m ²
Baño	3.99 m ²
Baño 1	3.76 m ²
Dormitorio 1	21.82 m ²
Distribuidor	4.06 m ²
Cocina	29.26 m ²
Cocina Interna	9.18 m ²
Hall	18.22 m ²
Bar/Comedor	94.8 m ²
Lavadero	4.33 m ²
Total	191.68 m²



Superficies Útiles Planta Primera

Dormitorio Principal	63.32 m ²
Distribuidor	18.42 m ²
Baño principal	12.97 m ²
Dormitorio 1	20.80 m ²
Dormitorio 2	20.80 m ²
Baño 2	6.13 m ²
Baño 1	3.76 m ²
Público	4.88 m ²
Total	159.66 m²

