



Sales - Apartment - Estepona
549.000€

www.mibgroup.es
+34 662 58 96 58
info@mibgroup.es

Community: 1,320 EUR / year IBI: 350 EUR / year

Rubbish: 60 EUR / year



PENTHOUSE WITH SPECTACULAR SEA VIEWS IN THE NEW PHASE OF PUERTO BLANCO ESTEPONA PORT This stunning luxury penthouse is set in one of the most desirable locations in Estepona, Las Mesas, just a few meters from Estepona Port. West facing with 3 bedrooms, 2 bathrooms (one of them en suite), fully equipped kitchen with a separate laundry area and a terrace with beautiful panoramic views to the sea, the Estepona Port, Gibraltar and the coast of Africa. This penthouse has seaviews from all rooms and features large doublé windows that allow for lots of natural sunlight. For the privacy of the owner, this special corner penthouse is the only apartment on the top floor of the building and is directly accesible by lift from the private garage. It includes a parking space in the underground garage of the building and the complex has a large swimming pool. It is also located beside the Las Mesas sports center where you have a modern gimnasium, paddle tennis and a cafetería. An excellent location for walking to supermarkets, restaurants, shops, beach and to Estepona town center.

Setting

- ✓ Town
- ✓ Beachside
- ✓ Port
- ✓ Close To Port
- ✓ Close To Shops
- ✓ Close To Sea
- ✓ Close To Town
- ✓ Marina
- ✓ Close To Marina
- ✓ Urbanisation

Climate Control

- ✓ Hot A/C
- ✓ Cold A/C

Kitchen

- ✓ Fully Fitted

Utilities

- ✓ Electricity
- ✓ Drinkable Water
- ✓ Photovoltaic solar panels
- ✓ Solar water heating

Orientation

- ✓ South
- ✓ South West
- ✓ West

Views

- ✓ Sea
- ✓ Mountain
- ✓ Port
- ✓ Country
- ✓ Panoramic

Garden

- ✓ Communal

Category

- ✓ Beachfront
- ✓ Golf
- ✓ Investment
- ✓ Luxury
- ✓ Resale
- ✓ Contemporary

Condition

- ✓ Excellent

Features

- ✓ Covered Terrace
- ✓ Lift
- ✓ Fitted Wardrobes
- ✓ Near Transport
- ✓ Private Terrace
- ✓ Satellite TV
- ✓ WiFi
- ✓ Paddle Tennis
- ✓ Ensuite Bathroom
- ✓ Double Glazing
- ✓ Fiber Optic

Security

- ✓ Gated Complex
- ✓ Entry Phone
- ✓ Alarm System

Pool

- ✓ Communal

Furniture

- ✓ Fully Furnished

Parking

- ✓ Underground
- ✓ Garage
- ✓ Covered

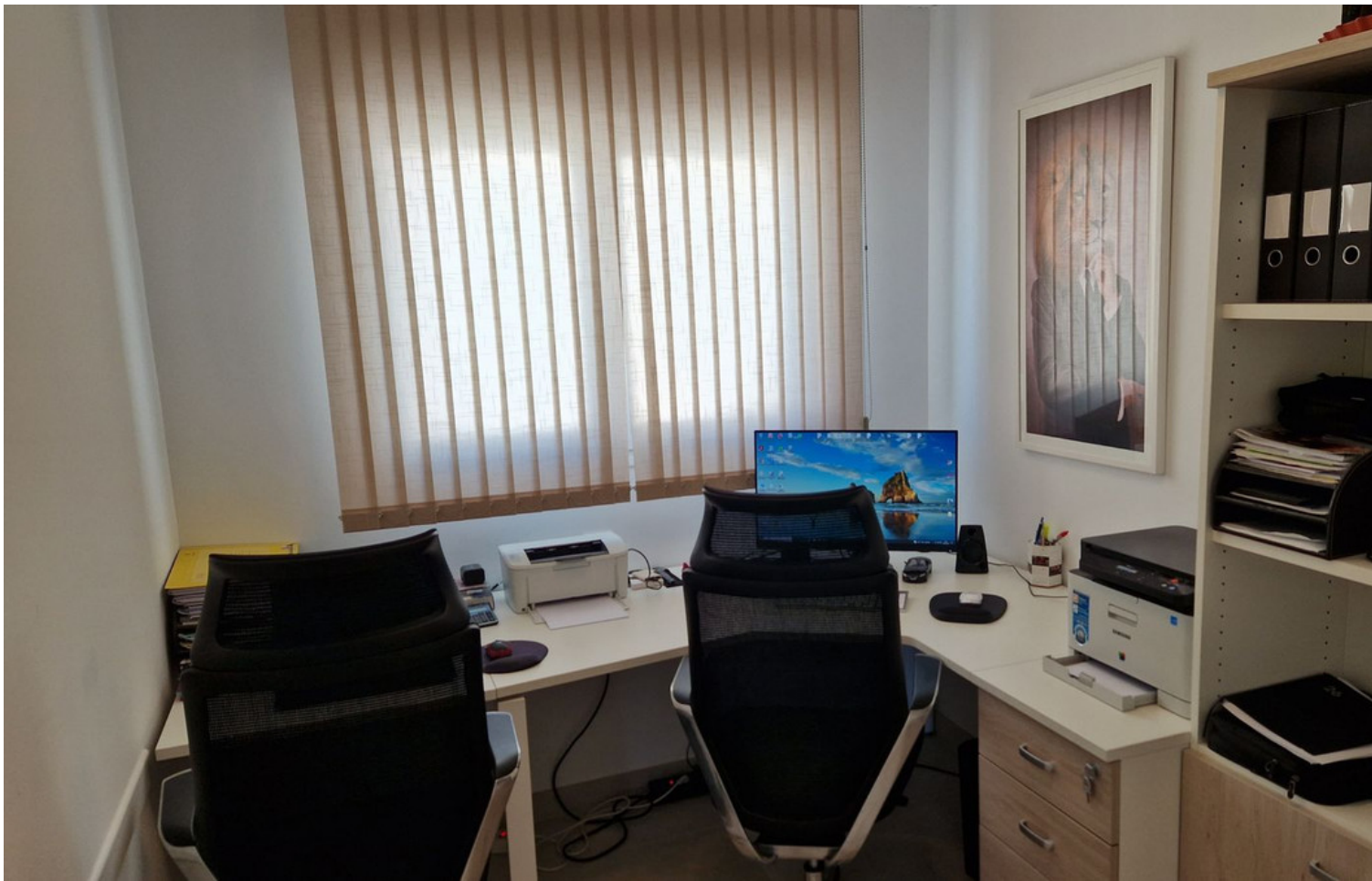














**NOSOTROS PONEMOS LA CASA,
TÚ LA LLENAS DE VIDA.**

Puerto Blanco
Estepona

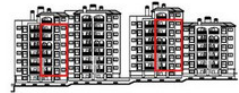
**130 VIVIENDAS, GARAJES
Y TRASTEROS**
AVENIDA REINA SOFIA
ESTEPEONA. MÁLAGA

VIVIENDA TIPO A
PORTALES 2,4,7 y 9
PLANTAS 1,2,3,4,5 y 6

Decreto
218/2005

SUPERFICIE CONSTRUIDA INTERIOR	82,90
SUPERFICIE CONSTRUIDA ZONA COMÚN	23,03
SUPERFICIE CONSTRUIDA TOTAL	105,93

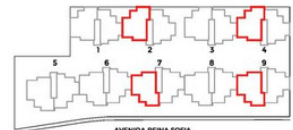
VESTIBULO	4,53
COCINA	7,35
LAVADERO	2,18
PASILLO	1,65
COMEDOR-ESTAR	18,24
BAÑO 1	4,39
BAÑO 2	3,80
DORMITORIO 1	10,61
DORMITORIO 2	7,97
DORMITORIO 3	7,82
SUPERFICIE ÚTIL INTERIOR	68,35
TERRAZA	8,30
SUPERFICIE ÚTIL EXTERIOR	8,30
SUPERFICIE ÚTIL TOTAL	76,65



VISTA DESDE ZONA VERDE



VISTA DESDE AVENIDA REINA SOFIA



AVENIDA REINA SOFIA



ESCALA GRÁFICA

LA INFORMACIÓN CONTENIDA EN ESTE DOCUMENTO, INCLUIDO EL DISEÑO, TIENE UN CARÁCTER COMERCIAL E ILUSTRATIVO, PODIENDO SUFRIR MODIFICACIONES SIN PREAVISO. EL CLIENTE DEBE VERIFICAR LA EXISTENCIA DE LA INFORMACIÓN EN EL CASO DE INTERÉS EN EL NIVEL DE CALIDAD DE CALIDAD DE CALIDAD (BROCHURE 17/2018).
La información está sujeta a modificaciones. El cliente deberá verificar la información en el momento de la compra y el precio de los terrenos, condiciones, etc. (información al 91 64 94 000) (información)

acciona
Inmobiliaria

