



Sales - Apartment - Benahavís
950.000€

www.mibgroup.es
+34 662 58 96 58
info@mibgroup.es

Ref.-ID: MIBGR5368243

Benahavís

Apartment

Community: 2,400 EUR / year



3



3



265 m2

Duplex Penthouse | Panoramic Sea Views | Private Lift | Rooftop Solarium A rare Hollywood Hills-style sky residence in prestigious Benahavís just above San Pedro — offering privacy, security, panoramic views and exceptional luxury just 10 minutes from the beach. Set across 3 levels with both private internal stairs and private interior lift, this stunning duplex penthouse combines the scale of a villa with the ease of lock-up-and-leave living. Wake up above the coastline and enjoy breathtaking sea, mountain and hillside views from every floor, with expansive terraces designed for year-round outdoor living and entertaining. Luxury Features Private interior lift to all 3 levels Private internal staircase 3 bedrooms 3 bathrooms Expansive great room with fireplace Multiple sea-view terraces Rooftop solarium for sunbathing, dining & sunset drinks Wall-to-wall marble luxury bathrooms Spectacular hammam / spa-style wellness bathroom Stylish kitchen Secure sought-after community Designed for both elegant everyday living and entertaining, this is a home where sunset cocktails, rooftop dining and total privacy come naturally. Located near All in 1 Café, restaurants, Monte Halcones, supermarket and daily amenities, with Marbella, Puerto Banús, golf, tennis and the beach all within easy reach. A standout luxury property for buyers seeking views, prestige, privacy and a true lifestyle residence on the Costa del Sol. First images are professionally staged to illustrate the lifestyle potential of the property. Images shown after present the home in its current vacant condition. Furniture package available by negotiation.

Setting

- ✓ Frontline Golf
- ✓ Town
- ✓ Suburban
- ✓ Close To Golf
- ✓ Close To Shops
- ✓ Close To Town
- ✓ Close To Schools
- ✓ Close To Forest
- ✓ Close To Marina
- ✓ Urbanisation

Climate Control

- ✓ Air Conditioning
- ✓ Fireplace

Kitchen

- ✓ Fully Fitted
- ✓ Partially Fitted
- ✓ Kitchen-Lounge

Utilities

- ✓ Electricity
- ✓ Drinkable Water
- ✓ Telephone

Orientation

- ✓ South
- ✓ South West
- ✓ North West

Views

- ✓ Sea
- ✓ Mountain
- ✓ Golf
- ✓ Country
- ✓ Panoramic
- ✓ Garden
- ✓ Pool
- ✓ Courtyard
- ✓ Forest

Garden

- ✓ Communal
- ✓ Landscaped
- ✓ Easy Maintenance

Category

- ✓ Bargain
- ✓ Golf
- ✓ Holiday Homes
- ✓ Investment
- ✓ Luxury
- ✓ Reduced
- ✓ Resale
- ✓ Contemporary

Condition

- ✓ Excellent
- ✓ Good
- ✓ Recently Renovated
- ✓ Recently Refurbished

Features

- ✓ Covered Terrace
- ✓ Lift
- ✓ Fitted Wardrobes
- ✓ Near Transport
- ✓ Private Terrace
- ✓ Solarium
- ✓ WiFi
- ✓ Games Room
- ✓ Tennis Court
- ✓ Ensuite Bathroom
- ✓ Marble Flooring
- ✓ Double Glazing
- ✓ Restaurant On Site
- ✓ Near Mosque
- ✓ Staff Accommodation
- ✓ Near Church
- ✓ Fiber Optic

Security

- ✓ Gated Complex
- ✓ Electric Blinds
- ✓ Entry Phone
- ✓ Alarm System
- ✓ Safe

Pool

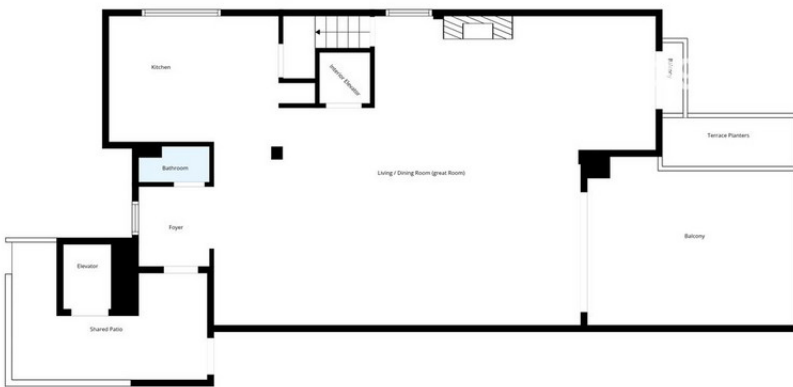
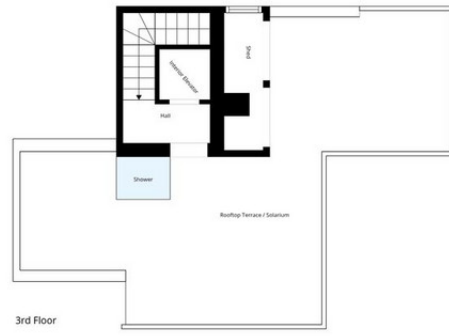
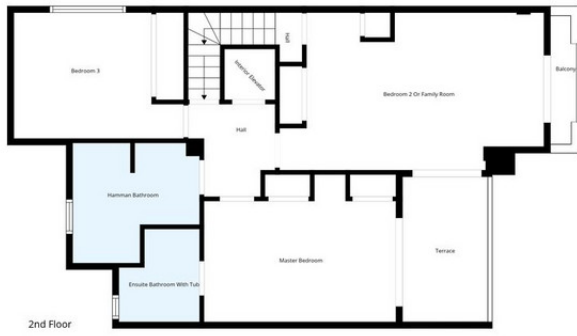
- ✓ Communal

Furniture

- ✓ Fully Furnished
- ✓ Part Furnished
- ✓ Not Furnished
- ✓ Optional

Parking

- ✓ Underground
- ✓ Garage
- ✓ Communal
- ✓ EV charge point



Floor Plan Created By Cubicasa App. Measurements Deemed Highly Reliable But Not Guaranteed.

























