

Ref.-ID: MIBGR5383642

La Quinta

Apartment

Community: 2,988 EUR / year



3



3



123 m2



40 m2

Beautifully Renovated Ground Floor Apartment in La Quinta, Benahavís - 3 Bedrooms, Private Garden, Panoramic Views & Touristic License The Apartment This stunning ground floor corner apartment is located in the prestigious area of La Quinta, Benahavís. Fully renovated to a high standard, it offers 3 bedrooms and 3 bathrooms across 123 m² of built space. The west-facing orientation ensures abundant natural sunlight throughout the day. The apartment features a brand-new kitchen, modern flooring, fully updated bathrooms, and stylish decor. A spacious private garden is perfect for relaxing or entertaining, with elevated panoramic mountain views enhancing the outdoor experience. An optional high-quality furniture package is available for €15,000, allowing for a turnkey move-in or rental investment. The Urbanisation Set within the quiet and secure La Quinta Hills gated community, residents enjoy access to three communal swimming pools, well-kept green spaces, and a dedicated maintenance and gardening team. Although parking is unassigned, the apartment benefits from its corner position, allowing convenient parking directly in front, along with ample guest and resident spaces throughout the community. The Location Ideally located in a peaceful, natural setting, yet just minutes from key attractions. You are within walking distance to the Westin La Quinta Hotel and Golf Course, and only a short drive to the AP-7 motorway, Puerto Banús, and San Pedro de Alcántara. The area offers numerous walking trails and outdoor spaces, while still being close to restaurants, shops, and local amenities. The apartment can be sold with a registered touristic license, making it a fantastic opportunity for those interested in short-term rental investment on the Costa del Sol.

Setting

- ✓ Frontline Golf
- ✓ Close To Golf
- ✓ Urbanisation

Climate Control

- ✓ Air Conditioning
- ✓ Central Heating

Kitchen

- ✓ Fully Fitted

Orientation

- ✓ South
- ✓ South West
- ✓ West

Views

- ✓ Mountain
- ✓ Golf
- ✓ Panoramic
- ✓ Garden
- ✓ Pool

Garden

- ✓ Communal
- ✓ Private
- ✓ Landscaped
- ✓ Easy Maintenance

Condition

- ✓ Excellent
- ✓ Recently Renovated
- ✓ Recently Refurbished

Features

- ✓ Fitted Wardrobes
- ✓ Private Terrace
- ✓ Storage Room
- ✓ Ensuite Bathroom

Security

- ✓ Gated Complex
- ✓ Alarm System

Pool

- ✓ Communal

Furniture

- ✓ Fully Furnished

Parking

- ✓ Covered
- ✓ Open
- ✓ More Than One
- ✓ Communal



























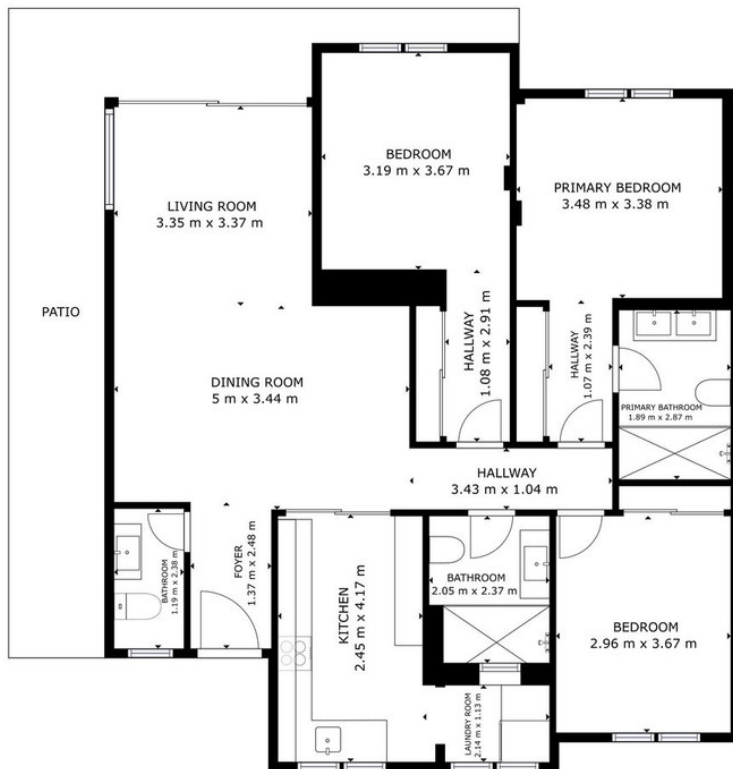












GROSS INTERNAL AREA
 FLOOR 1: 112.1 m²
 EXCLUDED AREAS: PATIO: 25.2 m²
 TOTAL: 112.1 m²
 SIZES AND DIMENSIONS ARE APPROXIMATE, ACTUAL MAY VARY.