

Ref.-ID: MIBGR5419912

Mijas

House



3



3



125 m2

EXCLUSIVE SEMI-DETACHED HOUSE WITH BREATHTAKING PANORAMIC SEA VIEWS IN MIJAS Discover this elegant semi-detached house located in one of the most privileged and sought-after areas of Mijas Pueblo. Elevated above the Costa del Sol, the property enjoys spectacular panoramic views over the Mediterranean Sea, the Andalusian mountains, and the coastline, creating a unique sense of space, tranquility, and exclusivity. Distributed over two levels, this exclusive residence offers spacious indoor and outdoor living areas perfectly designed to enjoy natural light and the exceptional Mediterranean surroundings. The property features: • Two large panoramic terraces • An elegant balcony with open views • Stunning sea and mountain views from almost every part of the house • Bright living room with direct access to the outdoor areas • Comfortable and luminous bedrooms • Ideal spaces for relaxing or entertaining guests • Elegant and timeless Mediterranean architecture Every outdoor space offers absolutely breathtaking and unmatched views, creating a unique atmosphere where the sea, mountains, and sky blend into a truly spectacular natural setting. The residence also benefits from a magnificent communal swimming pool, perfectly maintained and ideal for enjoying the exceptional Costa del Sol climate all year round. Prime location: • Situated in one of the most exclusive areas of Mijas Pueblo • Only a few minutes from restaurants, shops, and all amenities • Close to prestigious golf courses • Fast access to Fuengirola, Marbella, and Málaga • Costa del Sol beaches within short distance • Málaga International Airport approximately 25 minutes away EXCEPTIONAL OPPORTUNITY An ideal property as a primary residence, prestigious holiday home, or real estate investment with strong appreciation potential in one of the most exclusive destinations in southern Europe.

Setting

- ✓ Suburban
- ✓ Village
- ✓ Close To Shops
- ✓ Close To Schools
- ✓ Urbanisation

Climate Control

- ✓ Air Conditioning

Kitchen

- ✓ Fully Fitted

Orientation

- ✓ South

Views

- ✓ Sea
- ✓ Mountain
- ✓ Country
- ✓ Panoramic
- ✓ Courtyard
- ✓ Forest

Parking

- ✓ Private

Condition

- ✓ Recently Renovated

Features

- ✓ Private Terrace

Category

- ✓ Investment

Pool

- ✓ Communal

Furniture

- ✓ Part Furnished



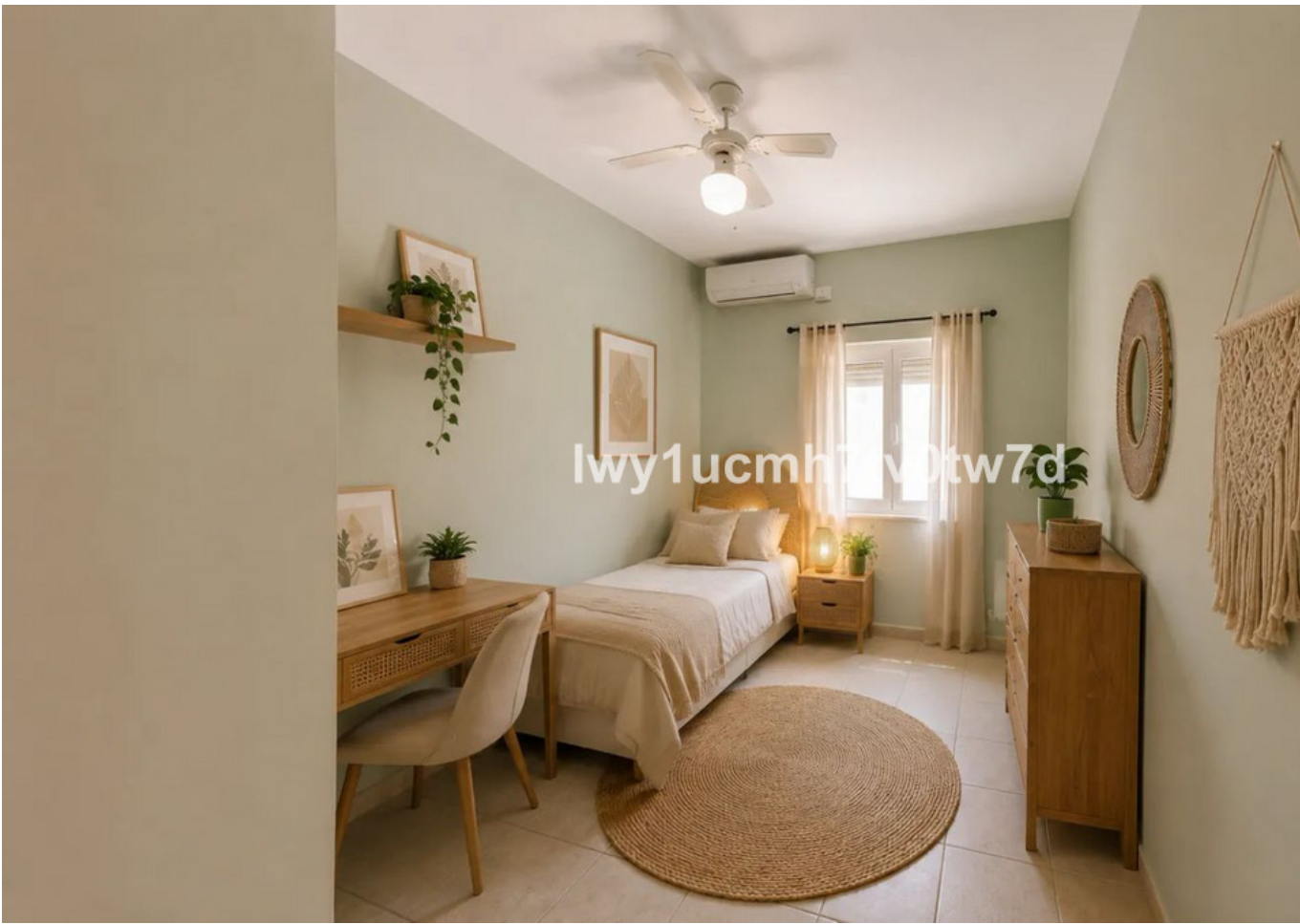
lwy1ucmh7tv0tw7d



lwy1ucmh7tv0tw7d













lwy1ucmh7tv0tw7d



lwy1ucmh7tv0lw7d



