



Sales - House - Estepona
732.000€

www.mibgroup.es
+34 662 58 96 58
info@mibgroup.es



4



4



250 m2

Spacious 4-Bedroom Family Townhouse with Private Patio & Flexible Basement – Zona Calvario, Estepona An ideal family home in a small, exclusive private urbanisation in Zona Calvario, Estepona. This charming semi-detached villa offers tranquillity and green surroundings while being just a short walk from the centre of Estepona. Key Features 250 m² built over 4 levels 4 bedrooms | 4 bathrooms Private patio with barbecue and outdoor dining area Two terraces with excellent orientation Fitted wardrobes Central heating + air conditioning Built in 2005 Private garage with 2 parking spaces Distribution Ground Floor: Bright living-dining room with double orientation and direct access to a terrace overlooking the park and a private patio with BBQ. Independent kitchen and guest toilet. First Floor: Two spacious bedrooms with fitted wardrobes and one bathroom. Master bedroom with en-suite bathroom and terrace with park views. Attic: Large fourth bedroom with its own en-suite bathroom and private terrace — ideal for guests or teenagers seeking privacy and independence. Basement: Versatile multi-purpose space (perfect as a gym, office, workshop or children’s playroom) with direct access from the garage. Location Situated in a quiet, green and secure residential area, yet only a few minutes’ walk from Estepona town centre, parks, schools, nurseries and shops. An excellent combination of peace and convenience. A spacious, versatile and well-built family home with great potential in one of Estepona’s most pleasant residential areas. Viewing highly recommended.

Setting

- ✓ Town
- ✓ Commercial Area
- ✓ Close To Shops
- ✓ Close To Sea
- ✓ Close To Schools
- ✓ Close To Marina
- ✓ Urbanisation

Orientation

- ✓ East
- ✓ West

Condition

- ✓ Excellent

Climate Control

- ✓ Air Conditioning
- ✓ Fireplace

Views

- ✓ Panoramic
- ✓ Garden
- ✓ Courtyard
- ✓ Urban
- ✓ Street

Features

- ✓ Covered Terrace
- ✓ Fitted Wardrobes
- ✓ Near Transport
- ✓ Private Terrace
- ✓ Solarium
- ✓ WiFi
- ✓ Storage Room
- ✓ Utility Room
- ✓ Ensuite Bathroom
- ✓ Marble Flooring
- ✓ Barbeque
- ✓ Double Glazing
- ✓ Near Church
- ✓ Fiber Optic

Furniture

- ✓ Fully Furnished

Kitchen

- ✓ Fully Fitted

Garden

- ✓ Communal

Security

- ✓ Gated Complex
- ✓ Alarm System

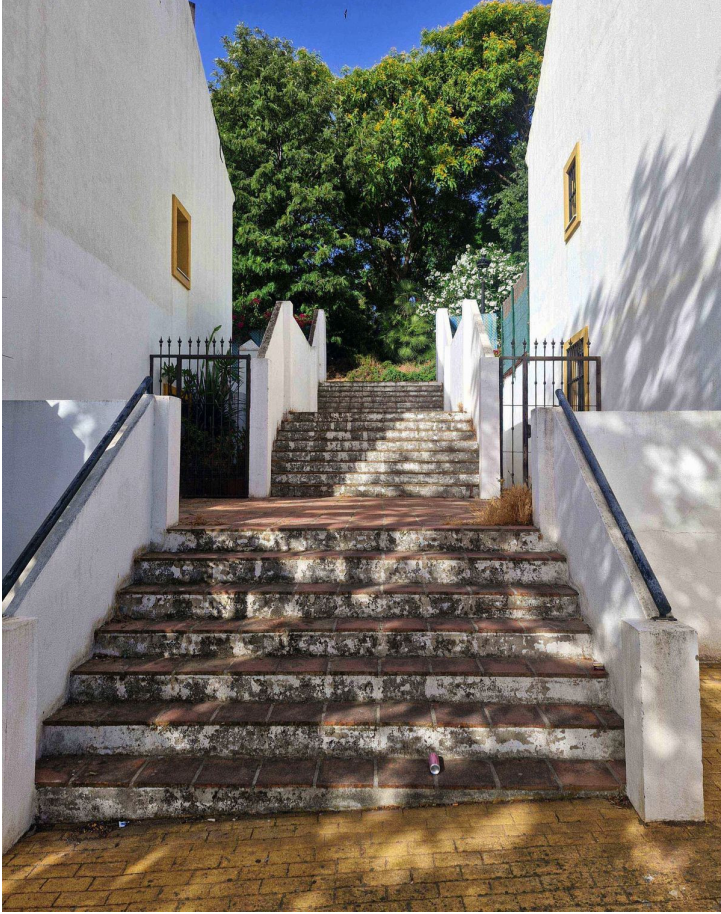
Parking

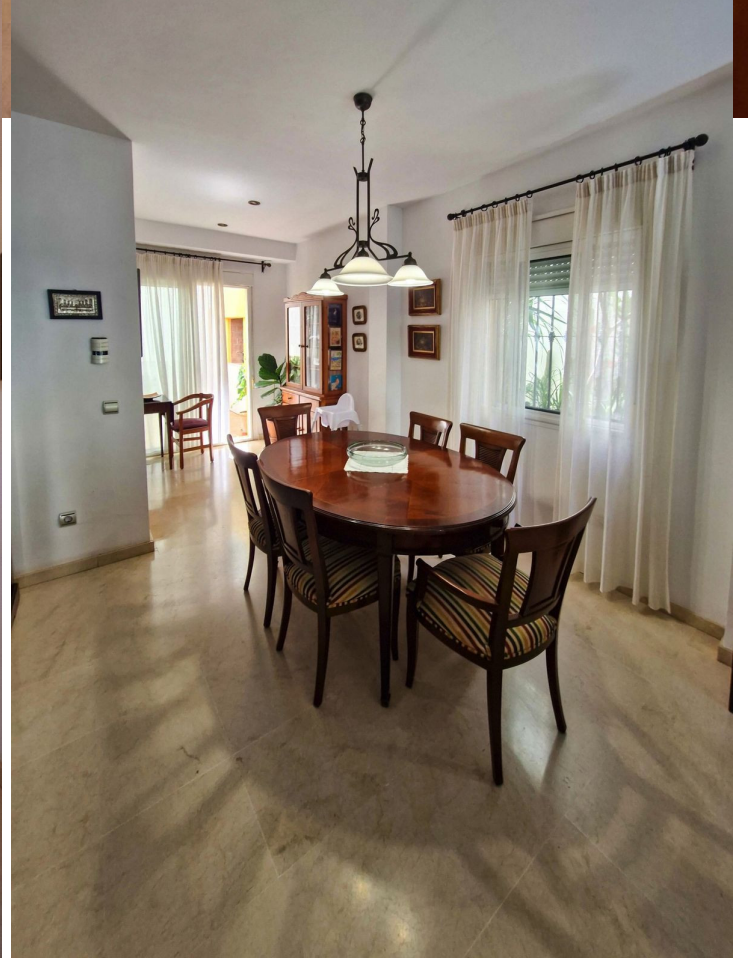
- ✓ Underground
- ✓ Garage
- ✓ Covered
- ✓ More Than One
- ✓ Private

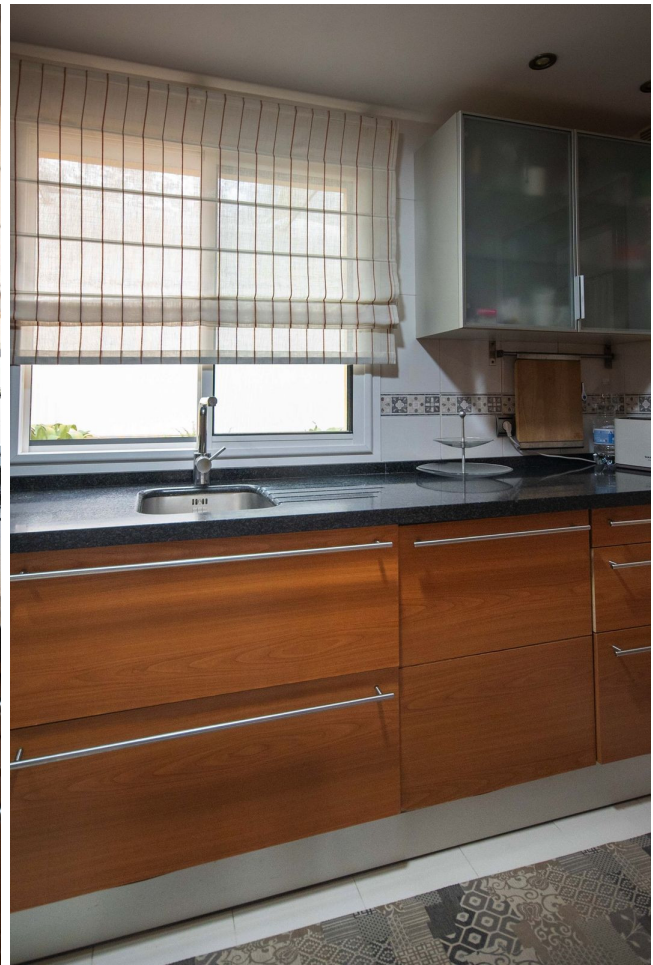






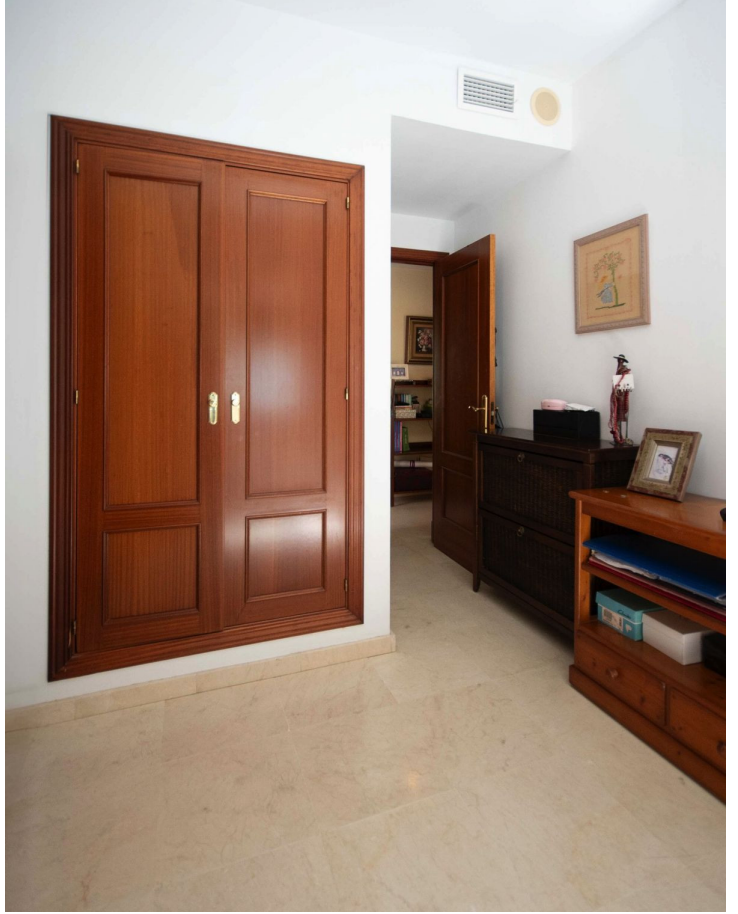










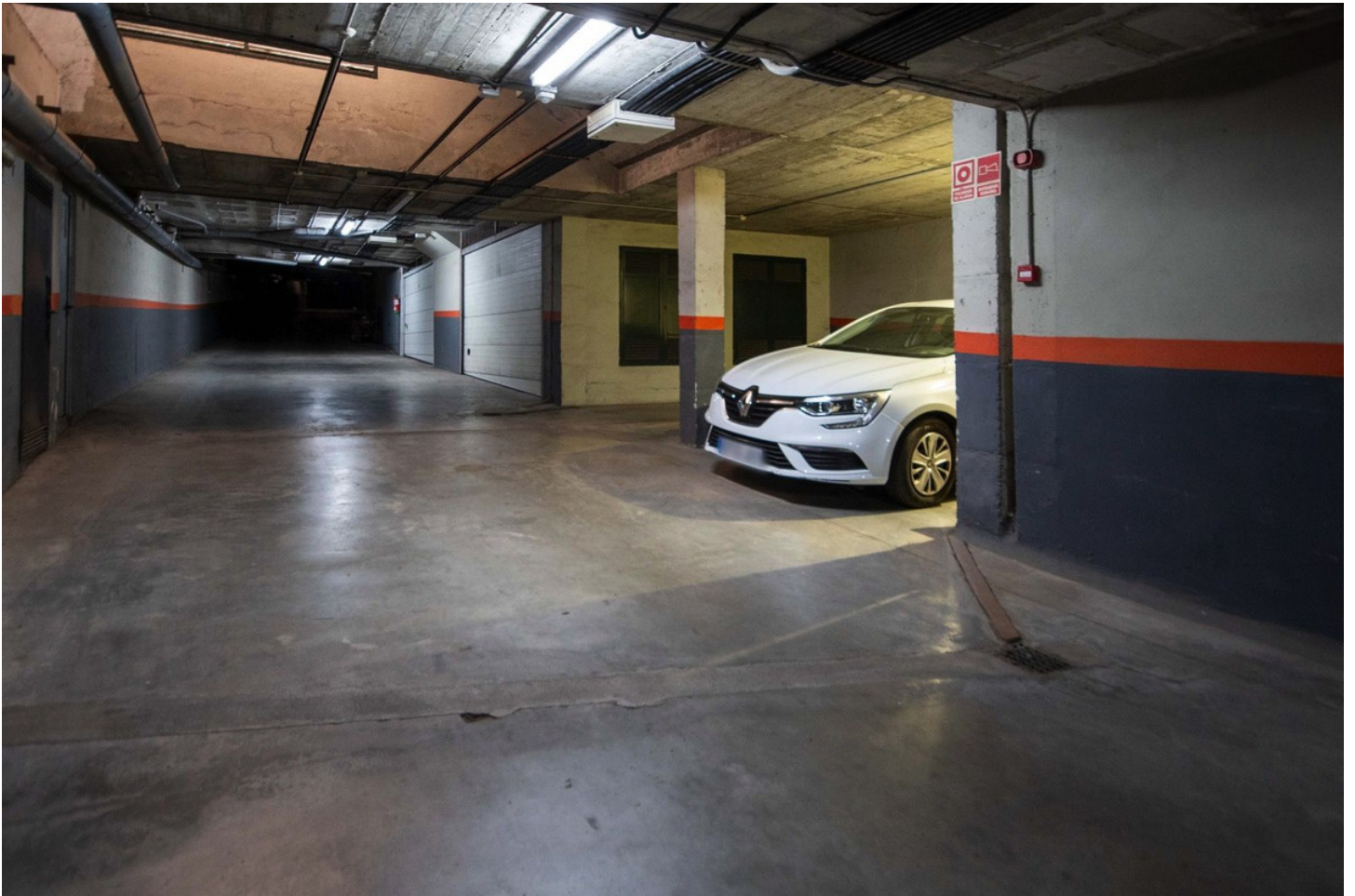




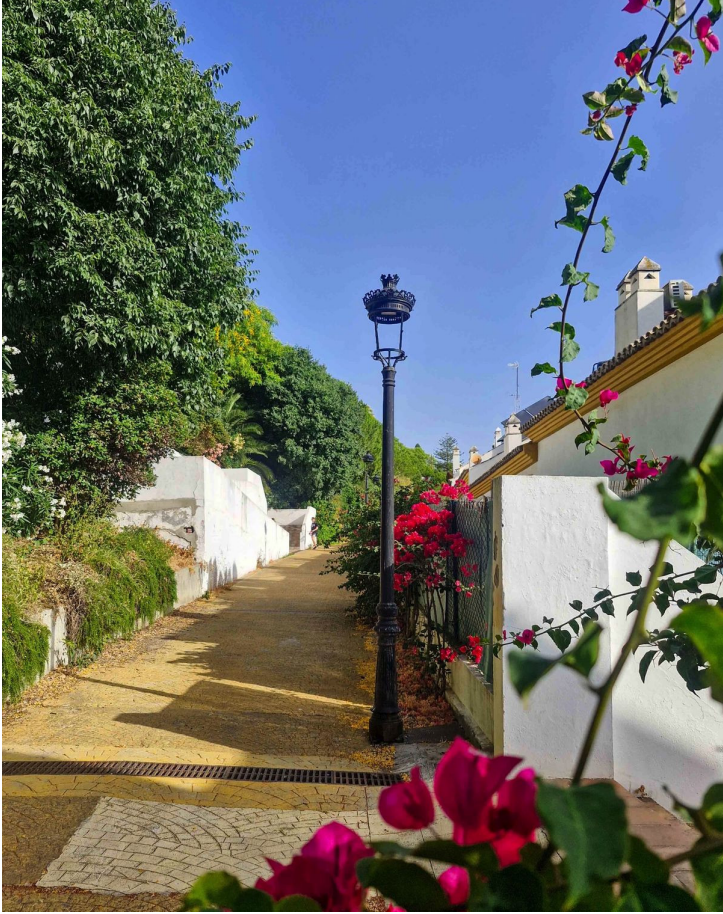








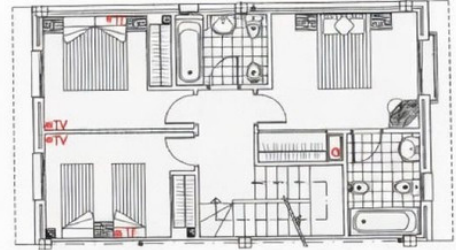








PLANTA GARAJE



PLANTA PRIMERA

TIRO DE CHIMENEA



PLANTA BAJA

6A



PLANTA SEGUNDA