

**Ref.-ID: MIBGR4674127**

**Málaga**

**Commercial**



**12**



**445 m2**



**180 m2**

For rent, this building located on Alameda Principal in Málaga offers a unique layout across ground, mezzanine, first, and second floors. Access is from Alameda Principal, with an entrance hall on the ground floor and an attractive lobby housing a glass elevator. The mezzanine comprises two interconnected rooms with views of Calle Panaderos. Both the first and second floors have a similar layout, with the main areas featuring large windows overlooking Alameda Principal and the rear areas facing Calle Panaderos. In the center is a hallway, with a room on one side and the toilets on the other. Highlighting a beautiful covered inner courtyard with a skylight housing the elevator, along with a staircase on one side. Charming walkways run through the adjacent space to the courtyard on each floor. The height of the ceilings and the wooden windows with wooden slat shutters, opening onto the trees of Alameda, create a cheerful and luminous atmosphere. An accessible toilet is included. The building, constructed in 1900 and last renovated in 2012, appears empty in the interior decoration photographs. For any additional inquiries, please feel free to contact our designated advisor.

**Setting**

- ✓ Close To Port
- ✓ Close To Shops
- ✓ Close To Town
- ✓ Close To Schools

**Climate Control**

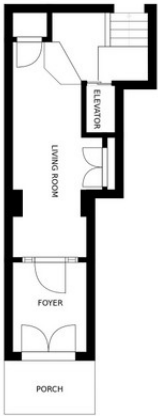
- ✓ Air Conditioning

**Views**

- ✓ Urban

**Features**

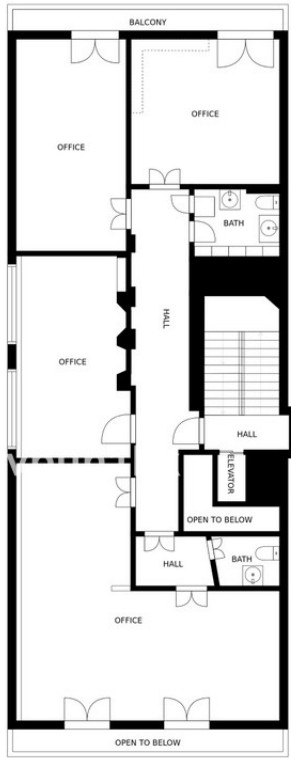
- ✓ Lift
- ✓ Near Transport



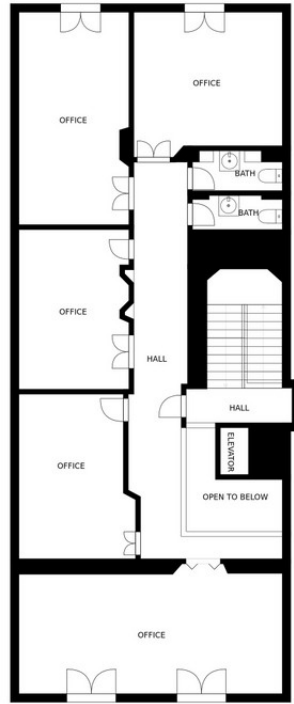
FLOOR 1



FLOOR 2



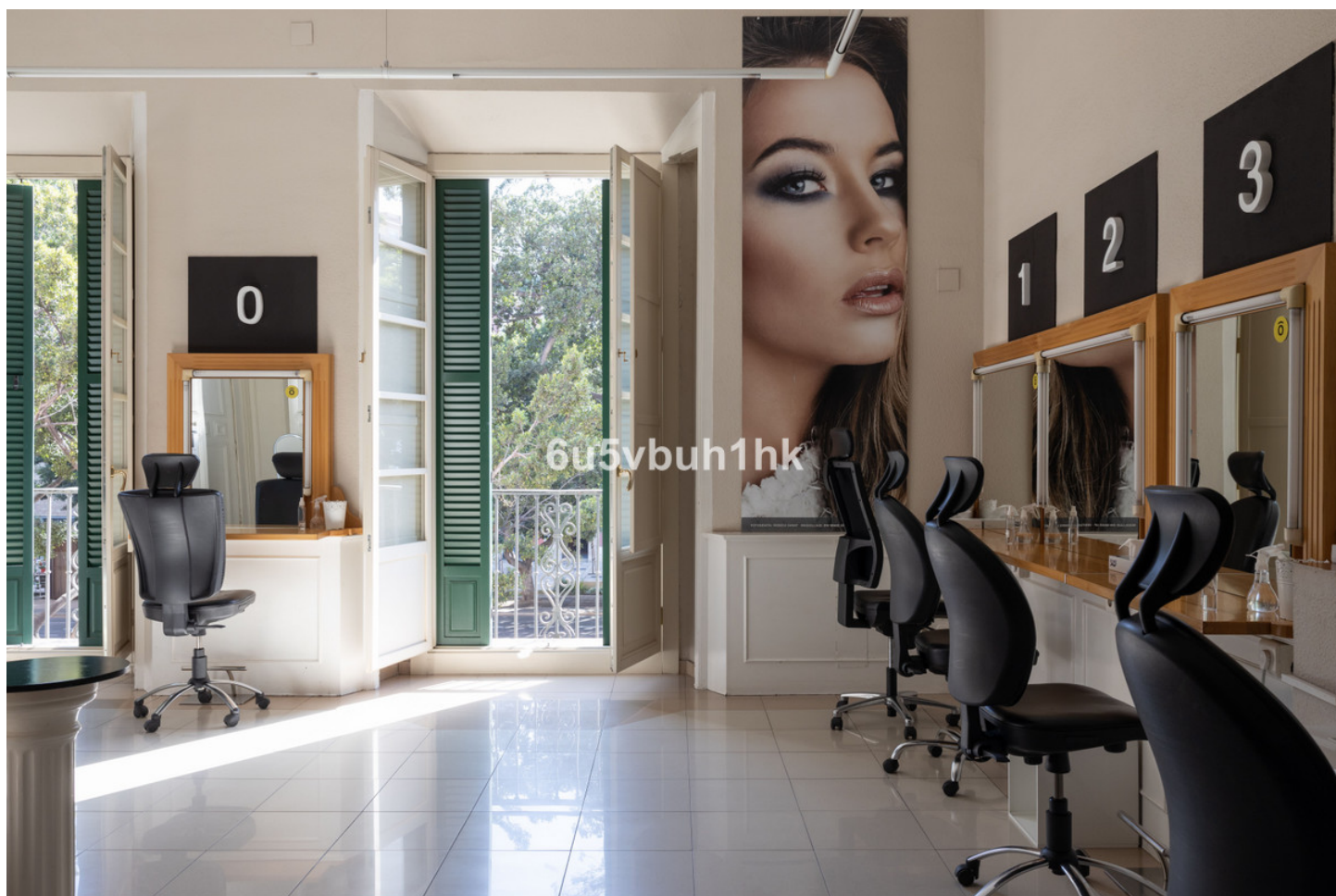
FLOOR 3



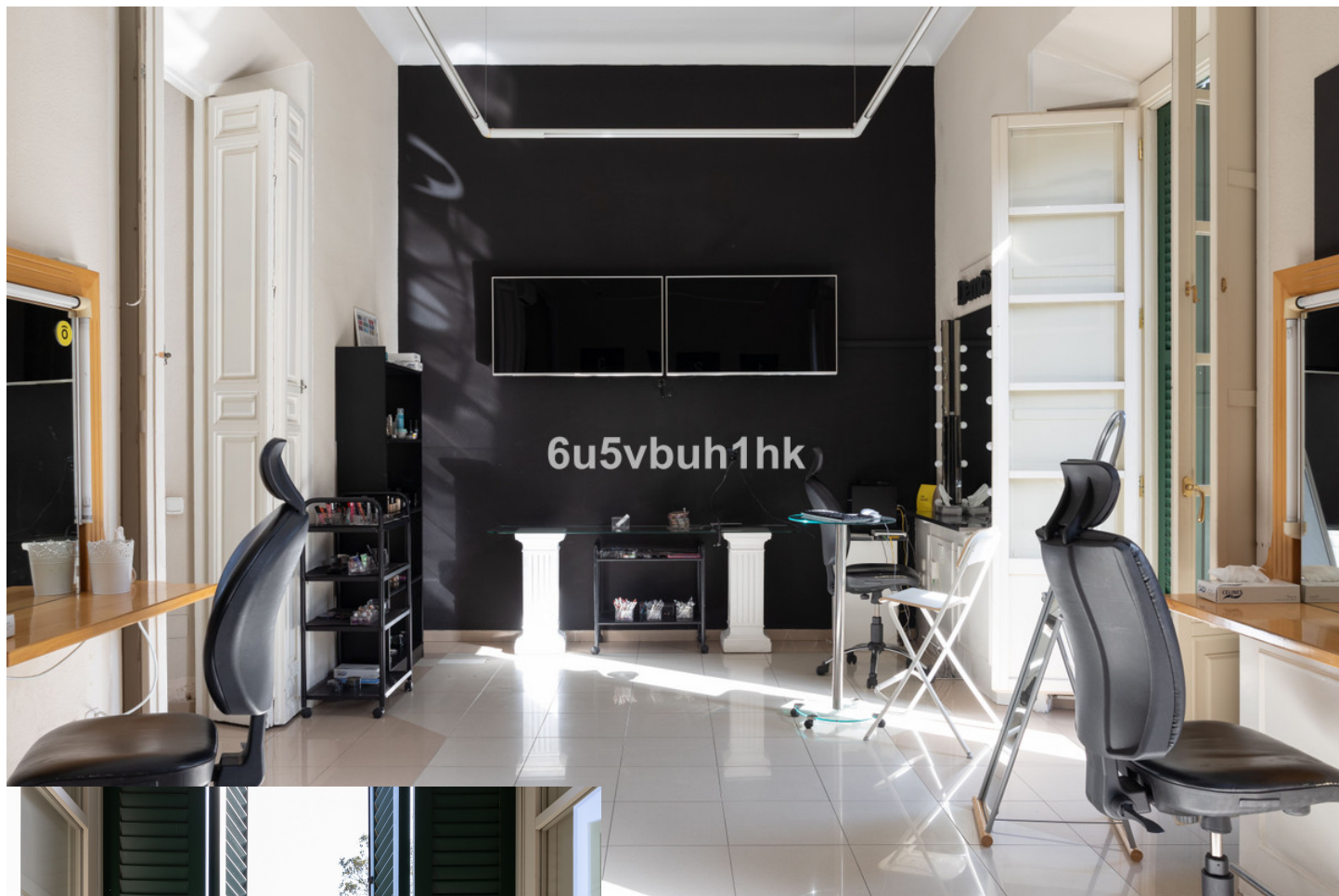
FLOOR 4

SIZES AND DIMENSIONS ARE APPROXIMATE, ACTUAL MAY VARY.

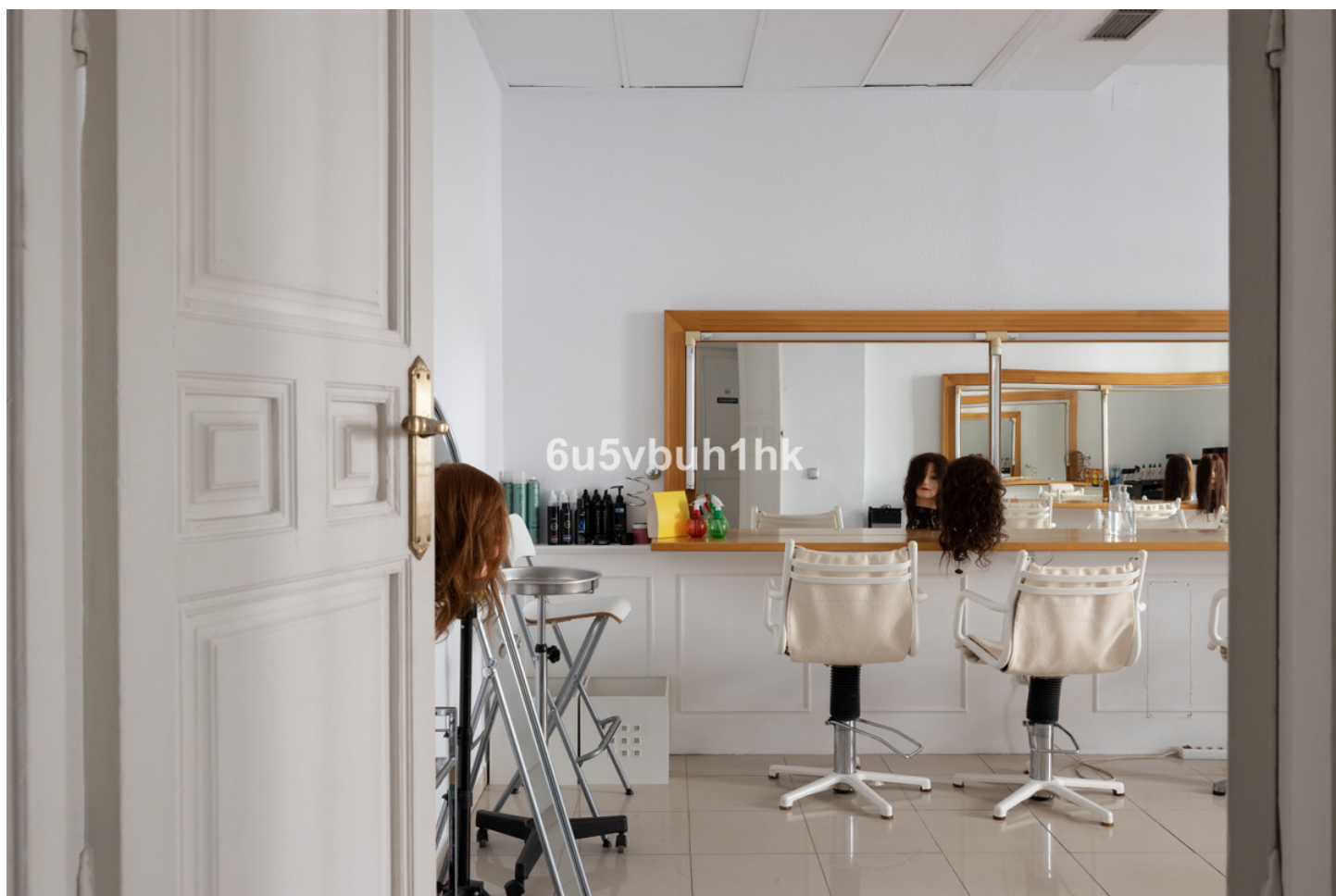












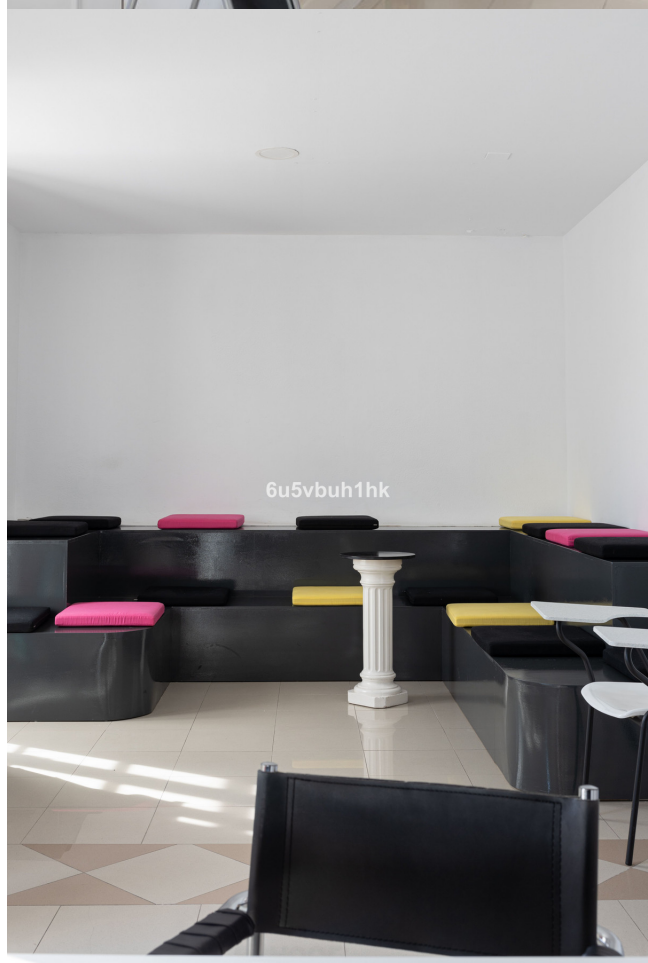
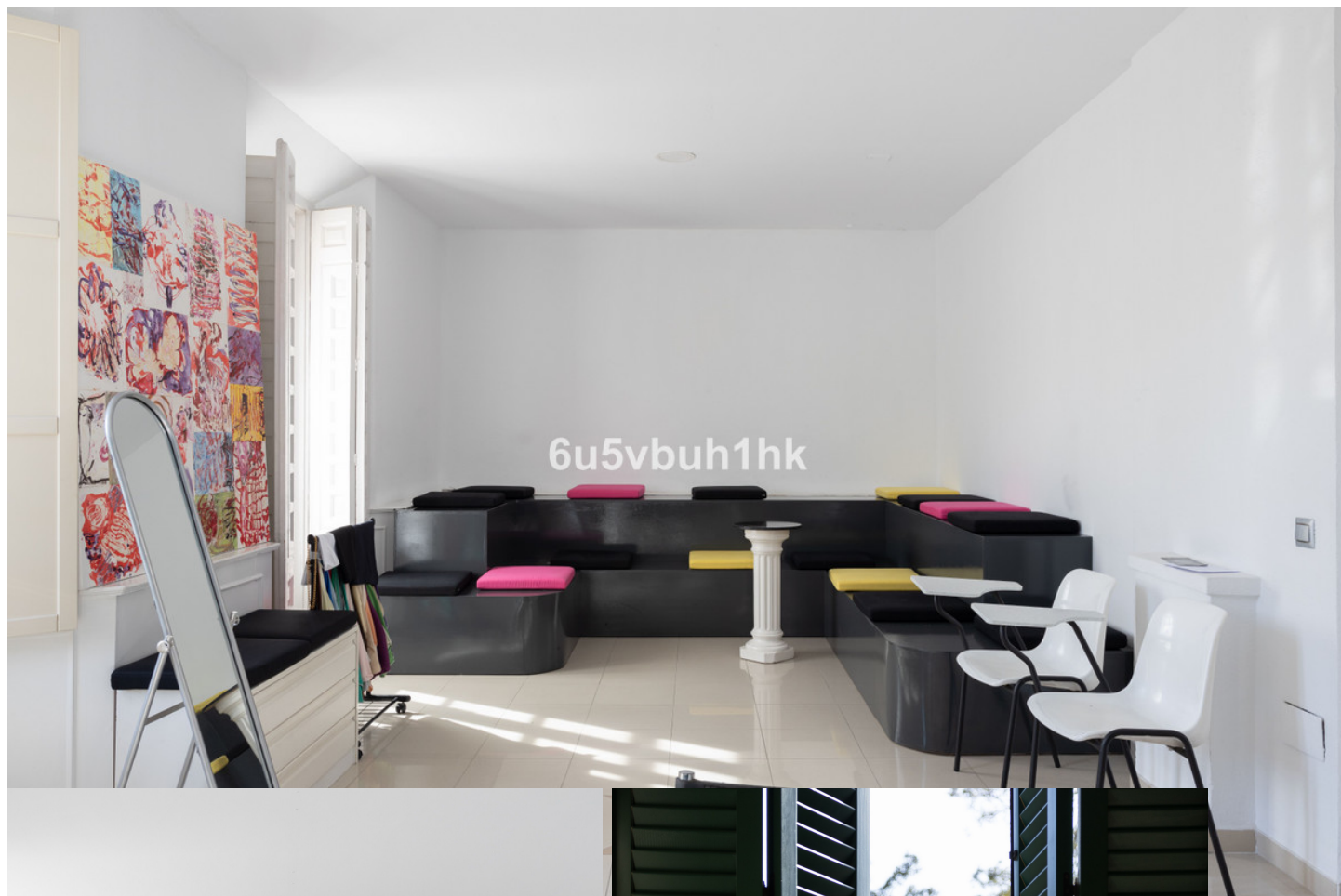






















6u5vbuh1hk



6u5vbuh1hk



6u5vbuh1hk



