

Ref.-ID: MIBGR4744201

Benahavís

House



4



3.5



420 m2

Located in Urb. Puerto Del Almendro La Resina, this immaculate 420-square meters villa has an open panoramic breathtaking views, set within a quiet gated community. It takes only 3 minutes by car to the nearest shops, restaurants and golf course. 10 minutes to the beach, San Pedro and Puerto Banus. This villa consists of 4 double bedrooms, sleep 8 people. Ground floor: You find a large hall with high ceilings and magnificent entrance. 1 guest toilet. 2 bedrooms with 180cm x 200cm beds plus 1 bathroom. Large living room with fireplace and pool table. From the living room you have direct access to the covered terrace with several living areas and fantastic views. It has a large pool, sun deck and lovely garden with hot Jacuzzi. The kitchen is spacious with exclusive choice of materials and large dining area. Adjacent to the kitchen, it leads you to a cozy patio with large dining table with seating for 8 people. Upper floor: Great hall. 1 bedroom en suite with 180cmx200cm bed + bathroom. Master bedroom with 210cm x200cm bed and a new renovated bathroom. Master bedroom opens onto a fantastic terrace with breathtaking sea and mountain views! A perfect holiday home in a tranquil area yet close to everything.

Setting

- ✓ Close To Golf
- ✓ Close To Shops
- ✓ Close To Town
- ✓ Close To Forest
- ✓ Urbanisation

Climate Control

- ✓ Air Conditioning
- ✓ Fireplace

Kitchen

- ✓ Fully Fitted

Utilities

- ✓ Electricity
- ✓ Drinkable Water

Orientation

- ✓ West

Views

- ✓ Sea
- ✓ Mountain
- ✓ Panoramic
- ✓ Garden
- ✓ Pool

Garden

- ✓ Private

Category

- ✓ Golf
- ✓ Holiday Homes
- ✓ Luxury

Condition

- ✓ Excellent

Features

- ✓ Private Terrace
- ✓ Ensuite Bathroom
- ✓ Jacuzzi
- ✓ Barbeque
- ✓ Double Glazing
- ✓ Fiber Optic

Security

- ✓ Gated Complex
- ✓ Alarm System

Pool

- ✓ Private

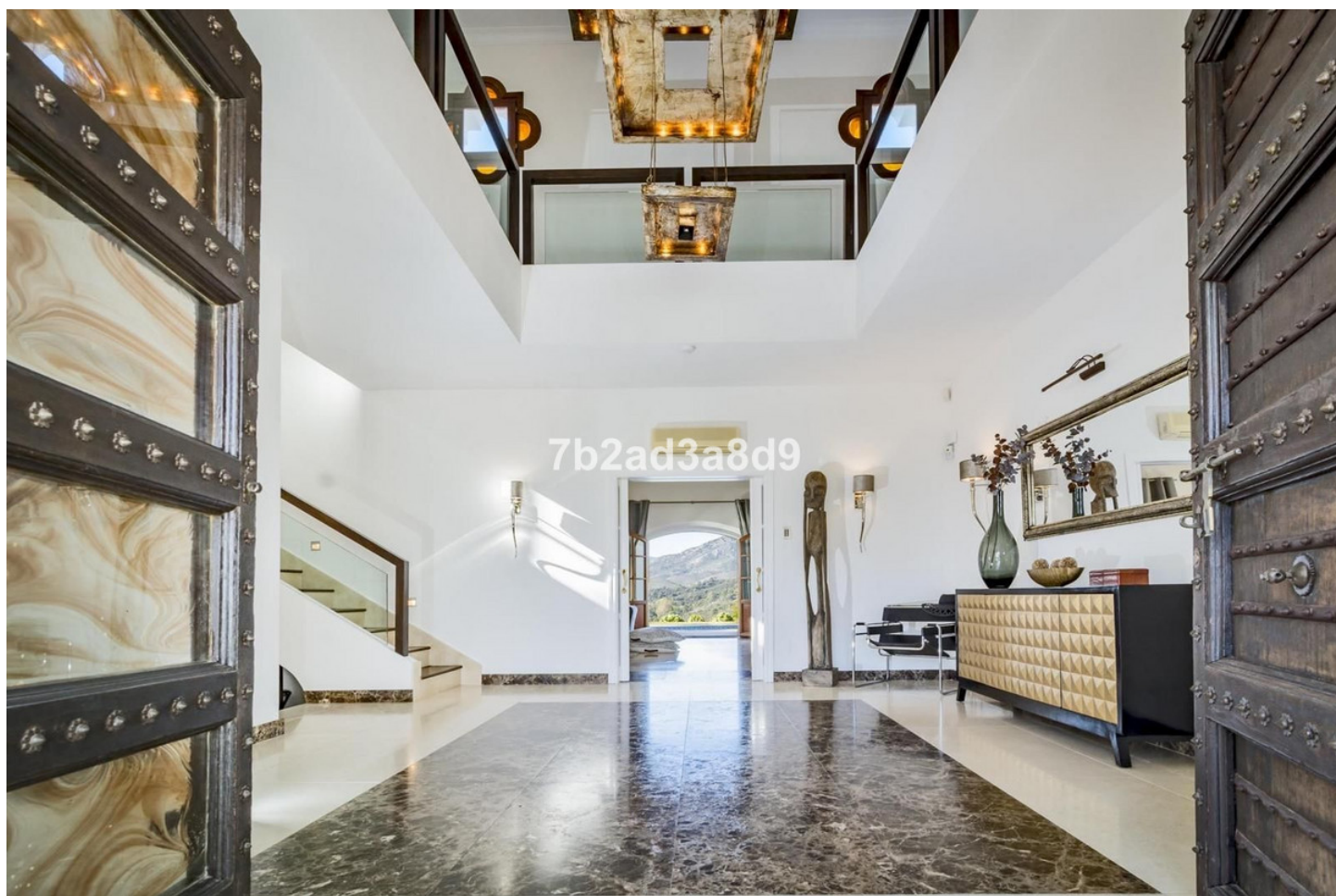
Furniture

- ✓ Fully Furnished

Parking

- ✓ Garage
- ✓ Private

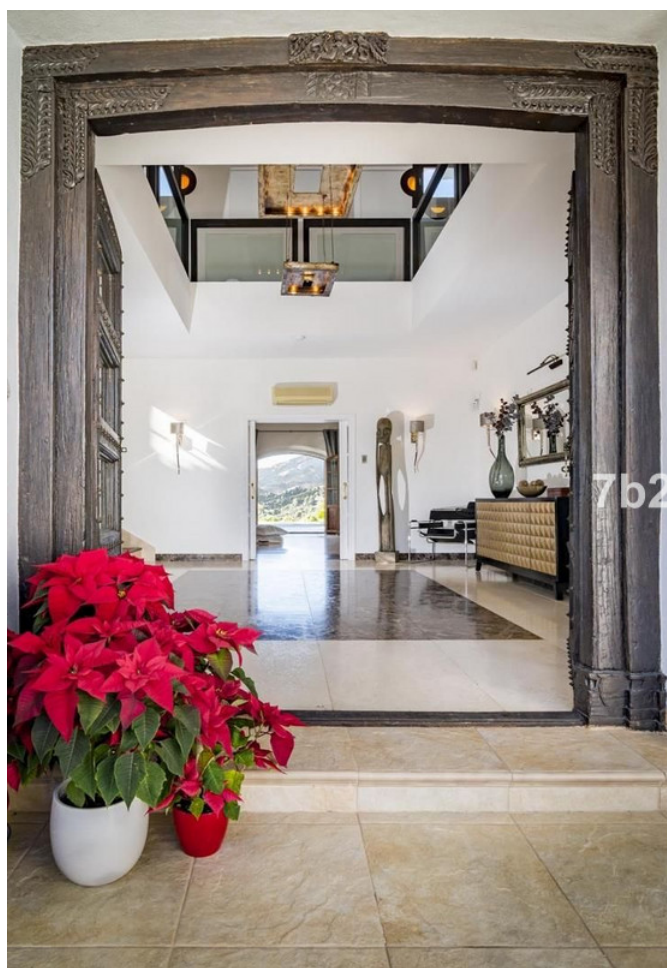


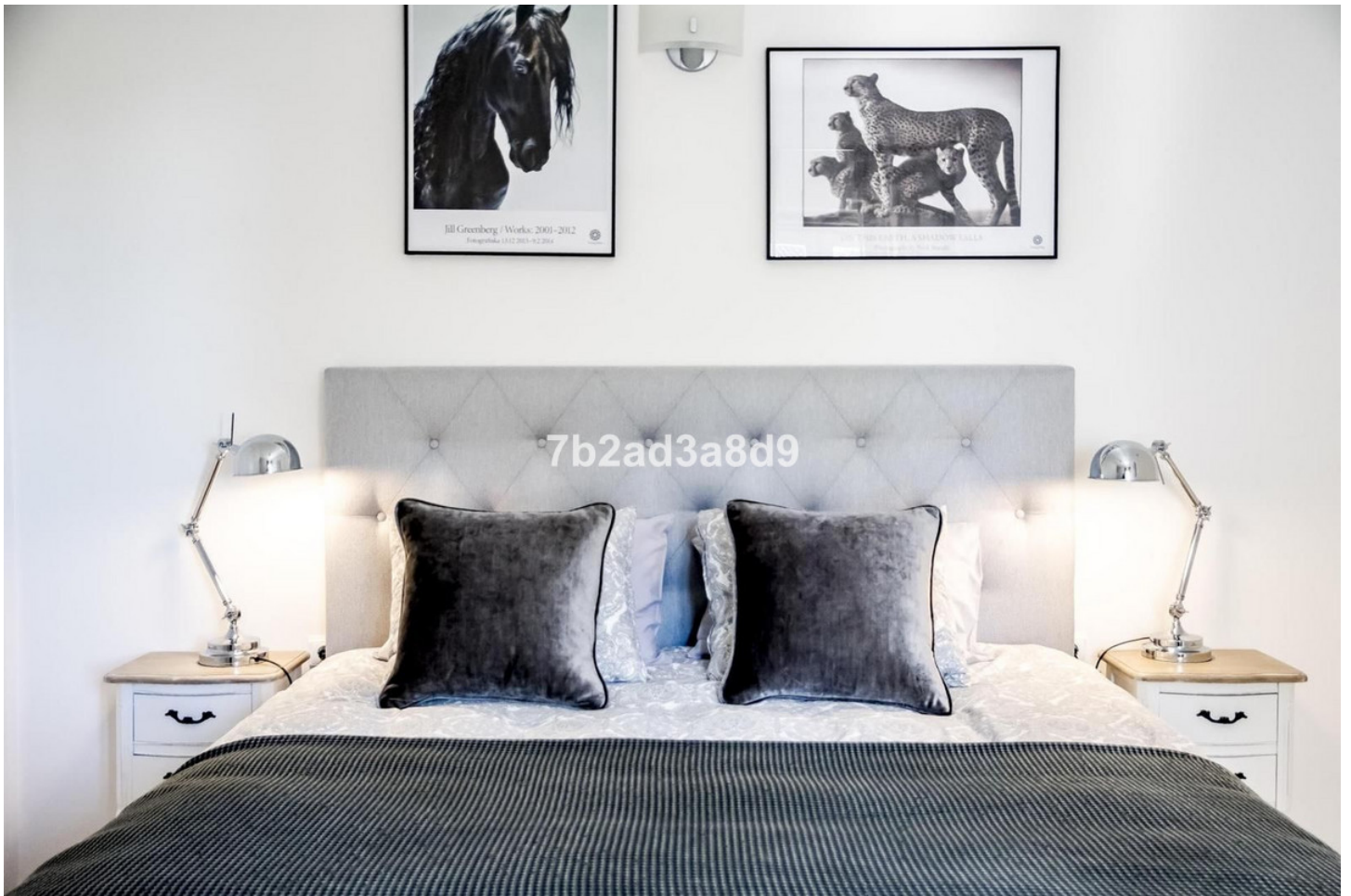












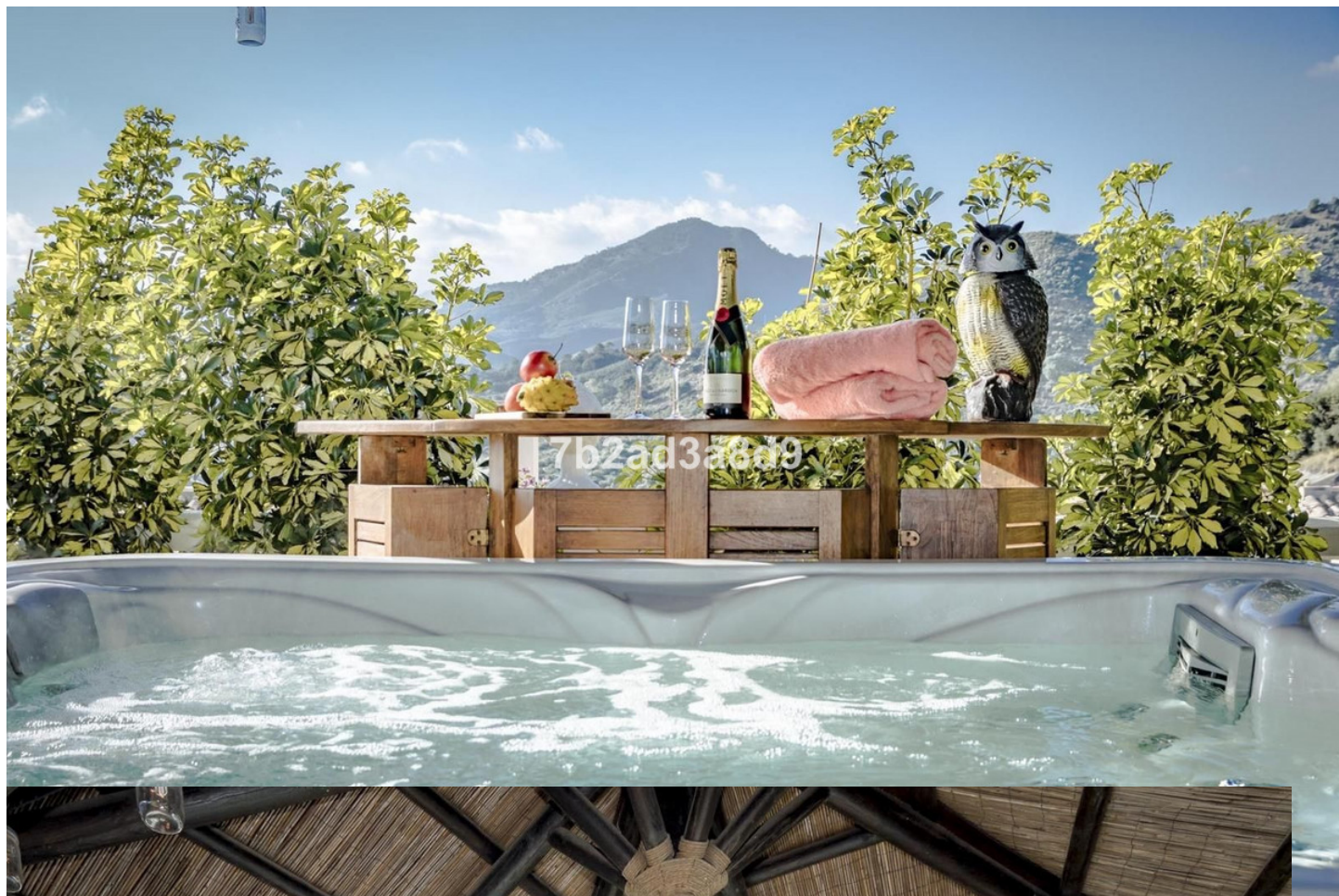














7b2ad3a8d9



7b2ad3a8d9



