

Ref.-ID: MIBGR5226148

San Pedro de Alcántara

House



This charming semi-detached home in Guadiaro – Los Ángeles, San Pedro de Alcántara, Marbella, is ideal for a family seeking comfort, space, and a convenient coastal lifestyle. Spread across two floors, the property offers five bright bedrooms (plus a small room that could fit a single bed, a walk in wardrobe or an office), three bathrooms, and spacious living areas designed for everyday family life. The home features a private garden and an 18m² covered terrace with a built-in barbecue, perfect for outdoor meals, relaxing, or children’s play. Located just a one-minute walk from one of the largest international schools on the coast, the property is also only five minutes on foot from a large supermarket and ten minutes from the beautiful beach, making daily life effortless. San Pedro de Alcántara is a charming and vibrant town with shops, cafés, and restaurants open year-round, as well as a welcoming community atmosphere. Its proximity to Puerto Banús, just a five-minute drive away, provides the perfect balance between a peaceful residential setting and quick access to the coast’s most dynamic area. With plenty of parks and open spaces nearby, this home offers an exceptional environment for children and families. Combining convenience, comfort, and a family-friendly location, this property is an ideal long-term rental for those looking to enjoy all that Marbella has to offer.

Setting

- ✓ Town
- ✓ Close To Sea

Features

- ✓ Covered Terrace
- ✓ Private Terrace

Parking

- ✓ Garage

Condition

- ✓ Good

Furniture

- ✓ Optional

Utilities

- ✓ Electricity

Climate Control

- ✓ Fireplace

Kitchen

- ✓ Fully Fitted

Views

- ✓ Garden

Garden

- ✓ Private
- ✓ Easy Maintenance



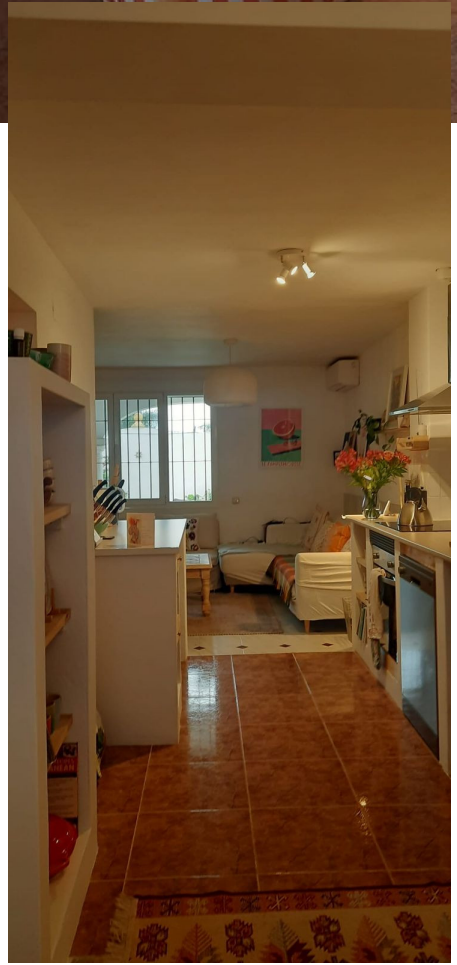










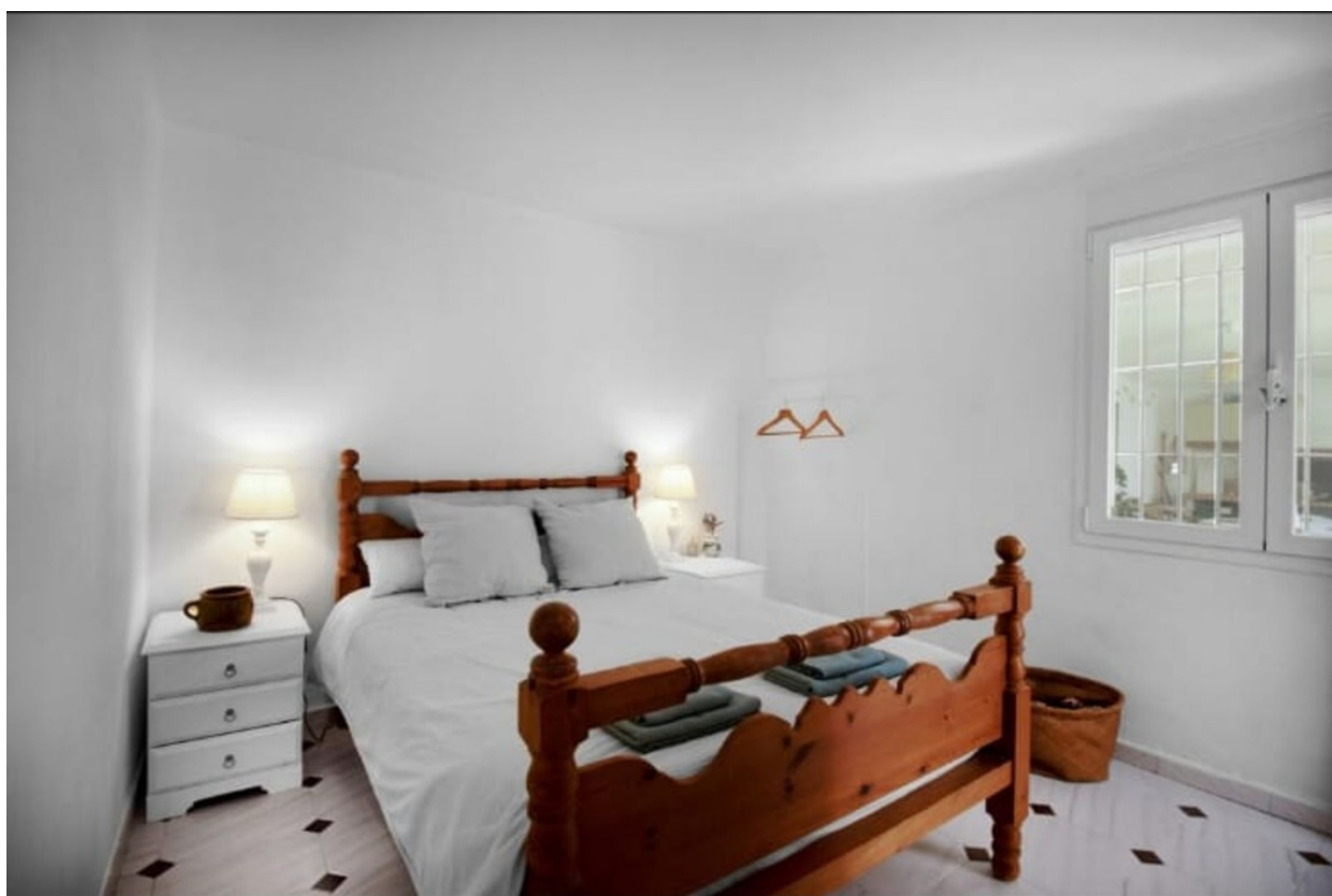
















Marbella - Villa

5 Bedrooms / 4 Bathrooms

Main Floor



Marbella - Villa

5 Bedrooms / 4 Bathrooms

Top Floor



This floorplan was created for illustrative purposes only. Neither the vendor nor the real estate agent guarantees the correctness of the measurements. The floor plan depicted may differ in size and shape from the actual property.
© 2019 M Move Franchise S.L.

MIMOVE