

Ref.-ID: MIBGR5210212

Fuengirola

Casa

Comunidad: 2,256 EUR / año IBI: 709 EUR / año

Basura: 76 EUR / año



3



2.5



214 m2

Adosada, Fuengirola, Costa del Sol - A poca distancia de la playa 3 Dormitorios, 2.5 Baños, Construidos 214 m², Terraza 42 m². Posición : Ciudad, Suburbano, Cerca de Tiendas, Cerca del Mar, Cerca de Ciudad, Cerca de Colegios, Urbanización. Orientación : Noreste , Sureste, Sur, Suroeste. Estado : Excelente. Piscina : Comunitaria, Piscina de Niños. Climatización : Aire Acondicionado, A/A Caliente, A/A Frio. Vistas : Mar, Montaña, Piscina, Calle. Características : Cerca de Transporte, Terraza Privada, Trastero, Baño En-Suite, Sótano, Fibra óptica. Muebles : Amueblada. Cocina : Equipada. Jardin : Comunitario. Seguridad : Recinto Cerrado. Aparcamiento : Subterráneo, Garaje. Servicios Públicos : Electricidad. Categoría : Inversion, Lujo.

Posición

- ✓ Ciudad
- ✓ Suburbano
- ✓ Cerca de Tiendas
- ✓ Cerca del Mar
- ✓ Cerca de Ciudad
- ✓ Cerca de Colegios
- ✓ Urbanización

Orientación

- ✓ Noreste
- ✓ Sureste
- ✓ Sur
- ✓ Suroeste

Estado

- ✓ Excelente

Piscina

- ✓ Comunitaria
- ✓ Piscina de Niños

Climatización

- ✓ Aire Acondicionado
- ✓ A/A Caliente
- ✓ A/A Frio

Vistas

- ✓ Mar
- ✓ Piscina
- ✓ Calle

Características

- ✓ Cerca de Transporte
- ✓ Terraza Privada
- ✓ Trastero
- ✓ Baño En-Suite
- ✓ Sótano
- ✓ Fibra óptica

Muebles

- ✓ Amueblada

Cocina

- ✓ Equipada

Jardin

- ✓ Comunitario

Seguridad

- ✓ Alarma

Aparcamiento

- ✓ Subterráneo
- ✓ Garaje
- ✓ Más de uno
- ✓ Privado

Categoría

- ✓ Inversion
- ✓ Lujo

























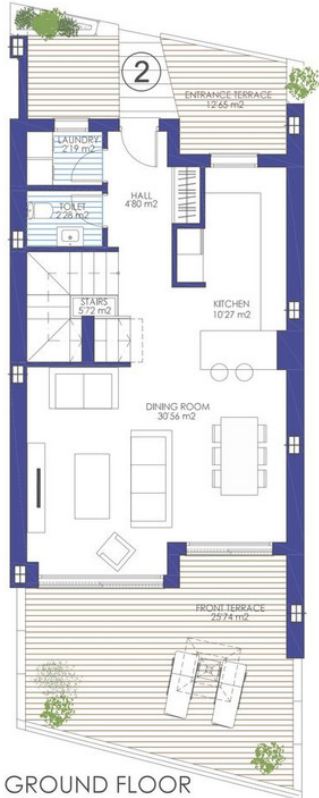








HOUSE 2



GROUND FLOOR



UPPER FLOOR



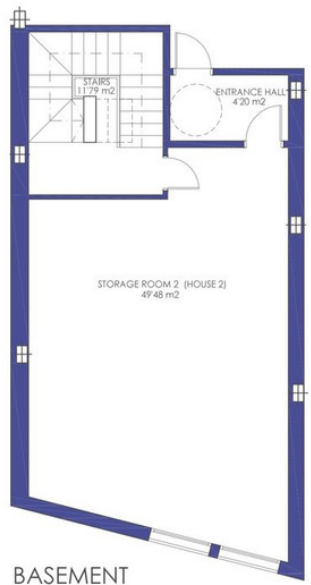
| CHALET N° 2 | |
|---|-----------------------------|
| BUILD SURFACES: | |
| BASEMENT: | 104.04 m ² |
| GROUND FLOOR: | 65.20 m ² |
| UPPER FLOOR: | 73.18 m ² |
| TOTAL BUILT SURFACE: | 242.42 m² |
| USEFUL SURFACES: | |
| GROUND FLOOR: | 55.82 m ² |
| UPPER FLOOR: | 54.96 m ² |
| TOTAL USEFUL SURFACE: | 110.78 m² |
| BASEMENT: | |
| Parking | 25.00 m ² |
| Entrance Hall | 4.20 m ² |
| Stairs-Distributor | 11.79 m ² |
| Storage room + Multipurpose room | 49.48 m ² |
| | 90.47 m ² |
| TERRACES AND OPEN AREAS: | |
| Front terrace: | 25.74 m ² |
| Entrance terrace: | 12.65 m ² |
| First floor terrace: | 4.94 m ² |
| | 43.33 m ² |
| SURFACE HOUSING ACCORDING TO DECREE 218/2005 | |
| USEFUL SURFACE: | 121.86 m ² |
| BUILT SURFACE: | 149.25 m ² |
| <small>(only housing, without parking or free spaces)</small> | |

Flavia Seagardens
F U E N G I R O L A

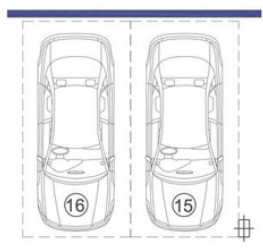
by Puerto Flavia SL

This document is not a contract and is provided for information only. The distribution and surface shown below may slightly vary due to technical reasons during building process. The only furniture included in the sale is kitchen furniture, which could be altered in terms of distribution and appearance from the one shown below

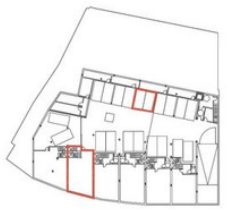
HOUSE 2



BASEMENT



PARKING



| CHALET N° 2 | |
|---|-----------------------------|
| BUILD SURFACES: | |
| BASEMENT: | 104.04 m ² |
| GROUND FLOOR: | 65.20 m ² |
| UPPER FLOOR: | 73.18 m ² |
| TOTAL BUILT SURFACE: | 242.42 m² |
| USEFUL SURFACES: | |
| GROUND FLOOR: | 55.82 m ² |
| UPPER FLOOR: | 54.96 m ² |
| TOTAL USEFUL SURFACE: | 110.78 m² |
| BASEMENT: | |
| Parking | 25.00 m ² |
| Entrance Hall | 4.20 m ² |
| Stairs-Distributor | 11.79 m ² |
| Storage room + Multipurpose room | 49.48 m ² |
| | 90.47 m ² |
| TERRACES AND OPEN AREAS: | |
| Front terrace: | 25.74 m ² |
| Entrance terrace: | 12.65 m ² |
| First floor terrace: | 4.94 m ² |
| | 43.33 m ² |
| SURFACE HOUSING ACCORDING TO DECREE 218/2005 | |
| USEFUL SURFACE: | 121.86 m ² |
| BUILT SURFACE: | 149.25 m ² |
| <small>(only housing, without parking or free spaces)</small> | |

Flavia Seagardens
F U E N G I R O L A

by Puerto Flavia SL

This document is not a contract and is provided for information only. The distribution and surface shown below may slightly vary due to technical reasons during building process. The only furniture included in the sale is kitchen furniture, which could be altered in terms of distribution and appearance from the one shown below