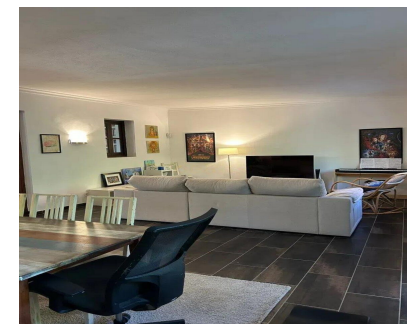
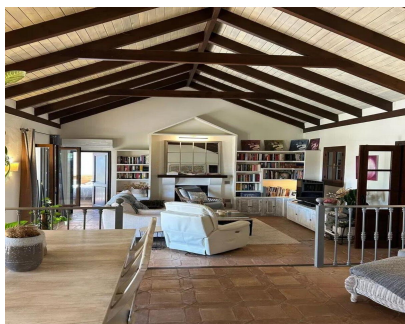


Продажа - Дом - Atalaya
1.695.000€



Ref.-ID: MIBGR5227531

Atalaya

Дом



4



3



250 m2



1246 m2

Detached villa for sale in Atalaya-Isdabe, located in a well-established residential area, perfect for those who value privacy, spaciousness, and peaceful surroundings. This property offers 280 m² of floor space on a generous 1,246 m² plot, distributed over four bedrooms and three bathrooms. The south-facing orientation guarantees light throughout the day, enhancing the high ceilings and the feeling of spaciousness in each room. Outside, there is a mature garden with 12 palm trees and a perimeter surrounded by hedges that ensure total privacy. Private pool and a shed at the bottom of the garden, ideal as a chill-out area, storage or play space. The house also has a separate kitchen with laundry room, private garage and large outdoor areas where you can enjoy the climate all year round. Located in a well-established and well-connected area, with easy access to the N-340 and surrounded by services, shops, and schools, making it an ideal choice for both a primary residence and a second home.

ОРИЕНТАЦИЯ

- ✓ Юг
- ✓ Юго-запад
- ✓ Запад

бассейн

- ✓ Приватный

Климат-контроль

- ✓ Кондиционер

Особенности

- ✓ Крытая терраса
- ✓ Приватная терраса
- ✓ Кладовка

Сад

- ✓ Приватный

Парковка

- ✓ Гараж
- ✓ С навесом
- ✓ Приватная