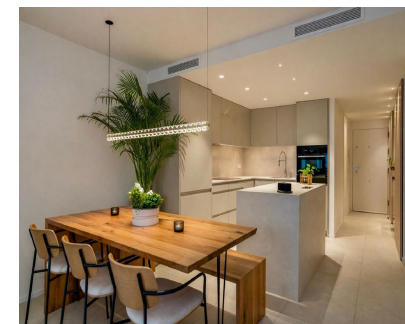
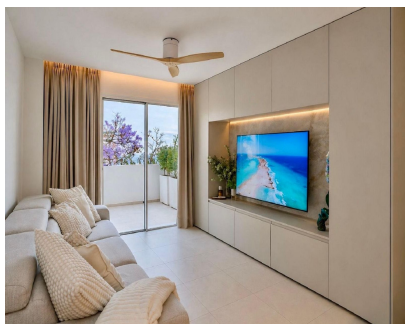


**Продажа - Апартамент - Benalmadena Pueblo**  
**549.000€**



**Ref.-ID: MIBGR5368801**

**Benalmadena Pueblo**

**Апартамент**

**Мусор: 172 EUR / год**



**3**



**2**



**111 m2**

FULLY RENOVATED CORNER APARTMENT with SEA VIEWS in Benalmádena Pueblo Discover this fantastic corner property, completely refurbished using top-quality materials and featuring a modern, functional design, ready to move into. Located in one of the most sought-after areas of Benalmádena Pueblo, it perfectly combines tranquillity, comfort, and proximity to all amenities. \*Prime location\* Just 500 metres from the village centre, with bars, restaurants and shops only a short walk away. In addition, a fully equipped sports centre with gym, swimming pool and football pitches is just 200 metres away. \*Outdoor spaces to enjoy\* The property boasts a pleasant main terrace of 9 m<sup>2</sup>, south-east facing, offering views of the sea and mountains. There is also a second covered terrace (8 m<sup>2</sup>), accessed from one of the bedrooms, currently used as a leisure area. \*Quality and comfort\* Fully refurbished, the apartment offers: -Ducted air conditioning throughout -Fitted wardrobes -Excellent layout and natural light -Modern design -Open-plan kitchen with island -En-suite bathroom \*INCLUDES PRIVATE GARAGE\* Underground garage included in the price. \*Communal areas\* The residential complex features a communal swimming pool and well-maintained gardens, ideal for relaxing and enjoying the Costa del Sol's climate. \*Layout\* Entrance hall, bathroom, kitchen and a spacious living-dining room with access to the main terrace. From the living room, a hallway leads to bedroom 2, bedroom 3 with a private terrace and the master bedroom with en-suite bathroom. \*Key details\* Built size: 111 m<sup>2</sup> Terraces: 9 m<sup>2</sup> + 8 m<sup>2</sup> Floor: 1st (building with only 2 floors) Orientation: South-east Year of construction: 2004 Rubbish tax: 172/year \*Distances\* -School: 20 m -Restaurants and bars: 100 m -Bus stop: 200 m -Sports centre: 200 m -Benalmádena Pueblo centre: 500 m -Airport: 15.2 km

#### Расположение

- ✓ Рядом с магазинами
- ✓ Рядом с городом
- ✓ Близко к школам

#### ОРИЕНТАЦИЯ

- ✓ Юго-восток
- ✓ Юг

#### Состояние

- ✓ Отличное
- ✓ Хорошее
- ✓ Недавно отремонтированная
- ✓ Недавно отделанная

#### бассейн

- ✓ Общий

#### Климат-контроль

- ✓ Кондиционер

#### ВИД

- ✓ Море
- ✓ Горы

#### Особенности

- ✓ Крытая терраса
- ✓ Лифт
- ✓ Встроенные шкафы
- ✓ Рядом с транспортом
- ✓ Приватная терраса
- ✓ Кладовка
- ✓ Ванная комната
- ✓ Двойные стеклопакеты

#### Кухня

- ✓ Полностью оборудованная

#### Сад

- ✓ Общественный

#### меры безопасности

- ✓ Огражденный комплекс
- ✓ Домофон

#### Парковка

- ✓ Подземная
- ✓ Гараж
- ✓ С навесом
- ✓ Приватная

#### Категория

- ✓ Дома для отдыха
- ✓ Элитная
- ✓ Современного