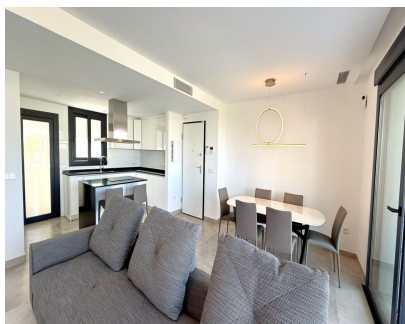
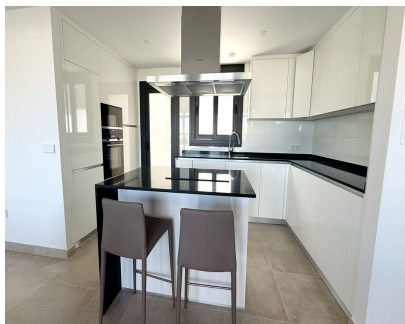


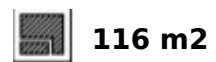
Долгосрочная Аренда - Апартамент - Atalaya
4.300€ / Месяц



Ref.-ID: MIBGR5135356

Atalaya

Апартамент



Discover a modern and luxurious lifestyle in this stunning apartment located in the sought-after area of Atalaya on the Costa del Sol. Situated within a gated community with 24-hour security, this property offers both tranquility and convenience, with nearby shops and services just a short walk away. Property Features: 3 Spacious Bedrooms & 2 Elegant Bathrooms: Each bedroom comes with fitted wardrobes, and the master suite includes an ensuite bathroom. The modern bathrooms are outfitted with underfloor heating for added comfort. Open-Plan Living Area: A large, beautifully designed living space flows effortlessly onto a 40 m² private terrace, perfect for relaxing or entertaining while enjoying views of the pool and garden. Fully Fitted Kitchen: Equipped with top-quality appliances, making it ideal for those who love cooking and entertaining. Climate Control: Stay comfortable year-round with air conditioning and underfloor heating. Complex & Community: Communal Pools & Gardens: Enjoy access to multiple swimming pools, jacuzzis, and beautifully maintained gardens, providing a serene escape in the heart of Atalaya. Modern Gym & Relaxation Areas: The complex includes a fully equipped gym and spaces designed for leisure and relaxation. High-End Security: The community is gated with electric blinds, entry phone systems, and 24-hour security, ensuring a safe and secure environment. Location & Amenities: Close to Shops & Town: Enjoy the convenience of being just moments away from local shops, restaurants, and town amenities. Parking & Connectivity: The apartment includes underground parking, high-speed fiber optic WiFi, and lift access to all floors. With its luxury features, expansive terrace, and access to top-notch amenities, this apartment is perfect for those looking to enjoy a vibrant, yet relaxed lifestyle in one of the most prestigious areas of the Costa del Sol.