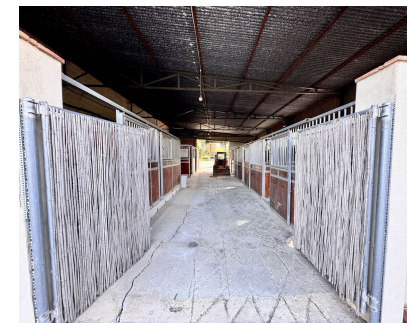


Продажа - Дом - Coín
899.000€

www.mibgroup.es
+34 661 89 71 88
info@mibgroup.es



Ref.-ID: MIBGR4941235

ИБИ: 1,400 EUR / год

Coín



5



3



315 m2

Дом



70000 m2

Your equestrian paradise awaits you!.. We present to you a unique estate, ideal for horse lovers and nature enthusiasts, with a total of 6 plots covering 70,000 m² of land. Enjoy an unparalleled natural environment and all the amenities for a life of luxury and comfort. Highlighted features: • 8 Luxury Stables: Spaces designed for the well-being and safety of your horses. • Spacious Storage Areas: Perfect for storing all your equestrian equipment. • Solar Energy: Save on your bills and contribute to environmental care. • Well Water: Access to natural, high-quality water. • Heated Pool: Enjoy a swim year-round. • Double-Glazed PVC Windows: Maximum comfort and energy efficiency. The estate includes an impressive two-story single-family house (311.22 m²), fully legalized, distributed as follows: • Ground Floor (191.24 m²): 4 bedrooms, kitchen, bathrooms, and spacious common areas.. • Upper Floor (119.98 m²): Large living-dining room, kitchen, study, terrace, and porch. Additionally, the property includes: • Adjacent Warehouse (121 m²), Adjacent Stable (175 m²), and Shed (36 m²). • 34 m² Pool for relaxation in any season. AFO INCLUDED!! An exceptional property, with 6 plots totaling 70,000 m², offering endless possibilities. Don't miss this opportunity to live surrounded by nature, luxury, and comfort! Contact us today for more information.

Расположение

- ✓ Горная деревня
- ✓ Рядом с городом

ОРИЕНТАЦИЯ

- ✓ Юг

Состояние

- ✓ Отличное
- ✓ Недавно отделанная

бассейн

- ✓ Приватный

ВИД

- ✓ Горы

Особенности

- ✓ Крытая терраса
- ✓ Встроенные шкафы
- ✓ Приватная терраса
- ✓ Спутниковое телевидение
- ✓ Гостевой дом
- ✓ Подсобное помещение
- ✓ Ванная комната
- ✓ Барбекю
- ✓ Двойные стеклопакеты
- ✓ Размещение персонала
- ✓ Конюшня

Мебель

- ✓ Частично меблированный

Кухня

- ✓ Полностью оборудованная

Сад

- ✓ Приватный
- ✓ Ландшафтный дизайн

Парковка

- ✓ С навесом
- ✓ Более чем один
- ✓ Приватная

Коммунальные услуги

- ✓ Электричество
- ✓ Питьевая вода