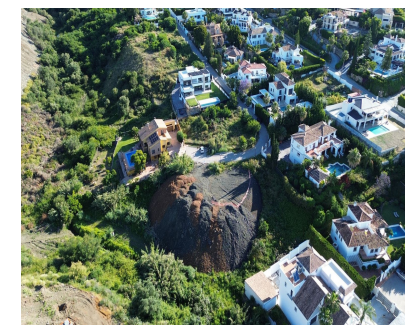


Продажа - Участок - Benahavís
700.000€

www.mibgroup.es
+34 661 89 71 88
info@mibgroup.es



Ref.-ID: MIBGR5040814

Benahavís

Участок



1240 m2

Plot with Approved Project and Paid License — Ready to Build in La Alquería, Benahavís! Discover the opportunity you've been waiting for in the exclusive Flores del Paraíso community, located in La Alquería, Benahavís. This spectacular 1,240 m² plot sits at the end of a peaceful cul-de-sac, offering the privacy and tranquility ideal for building your dream home. With its south-facing orientation, the plot benefits from natural sunlight all day long, creating a bright and inviting atmosphere. It offers 50% buildability, allowing for the construction of up to 620 m² distributed over three floors — perfect for a custom-designed luxury villa. The best part? The construction license has already been approved and fees fully paid, so you're ready to start building immediately — no delays, no red tape. Set in one of the most desirable residential areas of the Costa del Sol, La Alquería is surrounded by top-tier golf courses such as El Paraíso, Atalaya, El Campanario, and Guadalmina — ideal for golf lovers and those who enjoy outdoor living. Located just 15 minutes from Puerto Banús and 20 minutes from Estepona, you'll have easy access to everything you need: schools within the urbanization, a Mercadona supermarket less than 3 km away, and quick, convenient access to the AP7 motorway. This is a rare opportunity to invest or build your ideal home in one of the most prestigious locations on the Costa del Sol. Key Features Total plot size: 1,240 m² Minimum saleable area: 1,240 m² Buildable area: 620 m² Maximum number of floors: 3 Access: Urban road Zoning status: Urban land (building plot) Permitted use: Residential – Single-family homes (villas) Utilities & Infrastructure Sewage system Public street lighting Paved sidewalks Contact us today for more information or to arrange a visit. Your future home awaits in Flores del Paraíso, La Alquería!

ОРИЕНТАЦИЯ

✓ Юг