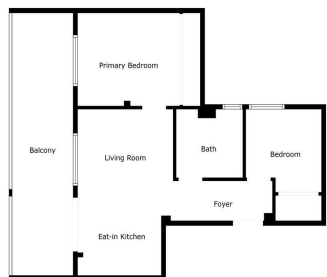


**Продажа - Апартамент - Benalmadena Pueblo**  
**349.000€**

**www.mibgroup.es**  
**+34 661 89 71 88**  
**info@mibgroup.es**



Floor Plan Created By Collette App. Measurements Givened Righty, Notable, Not Not Guaranteed.



**Ref.-ID: MIBGR5162749**

**Benalmadena Pueblo**

**Апартамент**

**Коммунальные: 720 EUR / год**

**ИБИ: 531 EUR / год**

**Мусор: 75 EUR / год**



**2**



**1**



**52 m2**

Discover this little gem in the heart of charming Benalmádena Pueblo – perfect as a holiday retreat or a permanent home. Smartly designed apartment that feels surprisingly spacious for its size. The highlight of this property is its spacious terrace, offering unbeatable views over the rooftops to the sparkling Mediterranean. Enjoy the sunshine all day long, with awnings available to create shade during the hotter summer months. Inside, you’ll find a cozy living room with an open-plan kitchen, ideal for relaxed living and entertaining. The home features two bedrooms and a modern bathroom with jacuzzi, with the main bedroom enjoying lovely sea views. Additional features include an underground garage for secure parking. Situated just a short stroll from all amenities – shops, restaurants, and cafés – this home offers the authentic Andalusian lifestyle. Benalmádena Pueblo is a picturesque village with narrow cobblestone streets, whitewashed houses, and a welcoming atmosphere. Public transport connects you easily to the beach, the vibrant Puerto Marina leisure port, and Málaga Airport, making it perfectly located. This is a rare opportunity to own a property with such views and charm in one of the Costa del Sol’s most sought-after villages.

**Расположение**

- ✓ Рядом с гольф-полем
- ✓ Рядом с магазинами
- ✓ Рядом с городом
- ✓ Близко к школам

**ОРИЕНТАЦИЯ**

- ✓ Юг

**Состояние**

- ✓ Отличное

**Климат-контроль**

- ✓ Кондиционер

**ВИД**

- ✓ Море
- ✓ Горы
- ✓ Панорамный
- ✓ Город

**Особенности**

- ✓ Лифт
- ✓ Рядом с транспортом
- ✓ Приватная терраса
- ✓ Джакузи
- ✓ Двойные стеклопакеты

**Мебель**

- ✓ По желанию

**меры безопасности**

- ✓ Сигнализация

**Парковка**

- ✓ Общая

**Коммунальные услуги**

- ✓ Электричество
- ✓ Питьевая вода