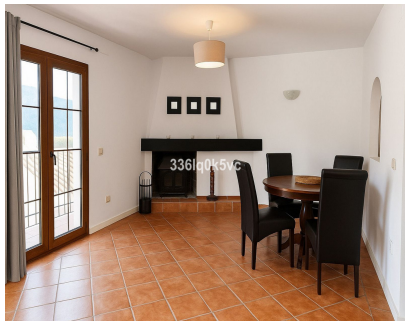


Продажа - Апартамент - Benahavís
245.000€

www.mibgroup.es
+34 661 89 71 88
info@mibgroup.es



Ref.-ID: MIBGR5223547

Benahavís

Апартамент



2



2.5



120 m2

Duplex apartment with 2 bedrooms and 2 bathrooms for sale in the heart of La Pacheca, Benahavís This charming duplex is located in the centre of Benahavís, within the quiet and typically Spanish urbanisation La Pacheca. Upon entering, you will find the bright living room with open kitchen, a guest toilet, and a wide terrace that offers a pleasant outdoor space to enjoy the excellent climate. On the lower floor, there are two spacious bedrooms, each with its own bathroom, providing plenty of privacy for residents or guests. The property requires some renovation—mainly the kitchen and bathrooms could benefit from an update. This has been taken into account in the pricing, making the apartment an excellent opportunity for anyone looking for a home they can modernise to their own taste. About Benahavís Benahavís is a charming mountain village located between Marbella, Estepona and Ronda. It is known for: A culinary reputation: Benahavís boasts an impressive selection of restaurants and is considered one of the gastronomic hotspots of the Costa del Sol. Authentic Andalusian character: The village maintains its traditional charm, with narrow streets, whitewashed houses, cosy squares and a relaxed, local atmosphere. Beautiful nature: Surrounded by mountains, rivers and lush valleys, it's a favourite destination for hikers, nature lovers and outdoor enthusiasts. Safe and well-maintained: Benahavís is one of the wealthiest municipalities in Spain, reflected in its clean streets, good infrastructure and high-quality services. Close to the coast: Although it is a mountain village, the beaches, golf courses and amenities of Marbella and Estepona are just a short drive away. It is exactly this combination of tranquility, nature, gastronomy and proximity to the coast that makes Benahavís so popular among both residents and holidaymakers.

Расположение

- ✓ Деревня
- ✓ Горная деревня
- ✓ Рядом с гольф-полем
- ✓ Рядом с магазинами
- ✓ Близко к школам

Особенности

- ✓ Приватная терраса
- ✓ Двойные стеклопакеты
- ✓ Оптическое волокно

ОРИЕНТАЦИЯ

- ✓ Восток

Мебель

- ✓ Без мебели

Состояние

- ✓ Нужен ремонт

Кухня

- ✓ Полностью оборудованная

бассейн

- ✓ Общий

Парковка

- ✓ Улица

Климат-контроль

- ✓ Камин

Коммунальные услуги

- ✓ Электричество
- ✓ Питьевая вода

ВИД

- ✓ Горы

Категория

- ✓ Выгодное предложение
- ✓ Инвестиции