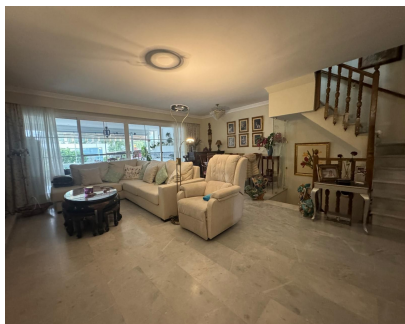


Продажа - Дом - Atalaya
545.000€

www.mibgroup.es
+34 661 89 71 88
info@mibgroup.es



Ref.-ID: MIBGR5319535

Atalaya

Дом

Коммунальные: 1,320 EUR / год

ИБИ: 716 EUR / год

Мусор: 148 EUR / год



4



3



220 m2

Spacious Townhouse with Expansive Private Garden and Endless Potential This exceptionally large townhouse offers generous living spaces, a wonderful private garden, and an ideal location close to San Pedro de Alcántara. Situated in a well-established residential area, the property enjoys quick access to both marbella and Estepona, nearby schools, and a full range of amenities and commercial services just minutes away. Distributed over four levels — including a basement and a loft — the home provides abundant space and flexibility for family living. The main floor features a spacious living room with a modern open-plan kitchen, a guest toilet, and a large glazed terrace that leads directly to the private garden, creating a seamless indoor-outdoor flow. On the first floor, you will find the master bedroom with en-suite bathroom, along with two guest bedrooms sharing a family bathroom. Both the master bedroom and one of the guest bedrooms have access to a southwest-facing terrace, perfect for enjoying the afternoon sun. The top-floor loft, distinguished by its charming wooden floors, is currently used as a spacious bedroom. It includes an en-suite bathroom and an east-facing terrace with beautiful sea and mountain views. The basement level is exceptionally large and highly versatile, offering a multi-purpose room with windows — ideal as a games room, home cinema, gym, or additional living area. This level also includes a storage room and a separate utility room. With its generous square meters and flexible layout, this is a property full of possibilities and ideal for modernization or customization to suit your personal style. The intimate urbanization consists of just eighth townhouses and features a beautifully maintained communal garden and swimming pool, providing a peaceful and private setting.

Расположение

- ✓ Рядом с гольф-полем
- ✓ Рядом с морем
- ✓ Близко к школам
- ✓ Урбанизация

Особенности

- ✓ Крытая терраса
- ✓ Встроенные шкафы
- ✓ Игровая комната
- ✓ Кладовка
- ✓ Подсобное помещение
- ✓ Ванная комната
- ✓ Деревянные полы
- ✓ Мраморные полы
- ✓ Подвал

ОРИЕНТАЦИЯ

- ✓ Юго-запад

Мебель

- ✓ По желанию

Состояние

- ✓ Хорошее

Кухня

- ✓ Полностью оборудованная

бассейн

- ✓ Общий

Сад

- ✓ Общественный
- ✓ Приватный

Климат-контроль

- ✓ Камин

Парковка

- ✓ Приватная

ВИД

- ✓ Море
- ✓ Горы
- ✓ Сад

Категория

- ✓ Инвестиции
- ✓ Перепродажа