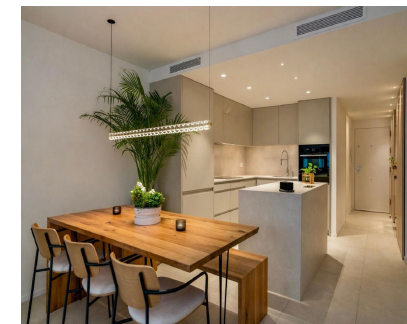




Продажа - Апартамент - Benalmadena Pueblo
549.000€

www.mibgroup.es
+34 661 89 71 88
info@mibgroup.es

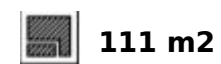


Ref.-ID: MIBGR5368801

Benalmadena Pueblo

Апартамент

Мусор: 172 EUR / год



FULLY RENOVATED CORNER APARTMENT with SEA VIEWS in Benalmádena Pueblo Discover this fantastic corner property, completely refurbished using top-quality materials and featuring a modern, functional design, ready to move into. Located in one of the most sought-after areas of Benalmádena Pueblo, it perfectly combines tranquillity, comfort, and proximity to all amenities. **Prime location** Just 500 metres from the village centre, with bars, restaurants and shops only a short walk away. In addition, a fully equipped sports centre with gym, swimming pool and football pitches is just 200 metres away. **Outdoor spaces to enjoy** The property boasts a pleasant main terrace of 9 m², south-east facing, offering views of the sea and mountains. There is also a second covered terrace (8 m²), accessed from one of the bedrooms, currently used as a leisure area. **Quality and comfort** Fully refurbished, the apartment offers: -Ducted air conditioning throughout -Fitted wardrobes -Excellent layout and natural light -Modern design -Open-plan kitchen with island -En-suite bathroom **INCLUDES PRIVATE GARAGE** Underground garage included in the price. **Communal areas** The residential complex features a communal swimming pool and well-maintained gardens, ideal for relaxing and enjoying the Costa del Sol's climate. **Layout** Entrance hall, bathroom, kitchen and a spacious living-dining room with access to the main terrace. From the living room, a hallway leads to bedroom 2, bedroom 3 with a private terrace and the master bedroom with en-suite bathroom. **Key details** Built size: 111 m² Terraces: 9 m² + 8 m² Floor: 1st (building with only 2 floors) Orientation: South-east Year of construction: 2004 Rubbish tax: €172/year **Distances** -School: 20 m -Restaurants and bars: 100 m -Bus stop: 200 m -Sports centre: 200 m -Benalmádena Pueblo centre: 500 m -Airport: 15.2 km

Расположение

- ✓ Рядом с магазинами
- ✓ Рядом с городом
- ✓ Близко к школам

ОРИЕНТАЦИЯ

- ✓ Юго-восток
- ✓ Юг

Состояние

- ✓ Отличное
- ✓ Хорошее
- ✓ Недавно отремонтированная
- ✓ Недавно отделанная

бассейн

- ✓ Общий

Климат-контроль

- ✓ Кондиционер

ВИД

- ✓ Море
- ✓ Горы

Особенности

- ✓ Крытая терраса
- ✓ Лифт
- ✓ Встроенные шкафы
- ✓ Рядом с транспортом
- ✓ Приватная терраса
- ✓ Кладовка
- ✓ Ванная комната
- ✓ Двойные стеклопакеты

Кухня

- ✓ Полностью оборудованная

Сад

- ✓ Общественный

меры безопасности

- ✓ Огражденный комплекс
- ✓ Домофон

Парковка

- ✓ Подземная
- ✓ Гараж
- ✓ С навесом
- ✓ Приватная

Категория

- ✓ Дома для отдыха
- ✓ Элитная
- ✓ Современного