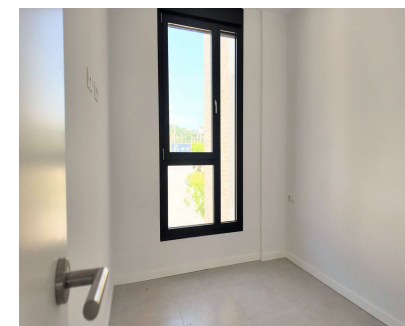




Продажа - Апартамент - Estepona  
575.000€

[www.mibgroup.es](http://www.mibgroup.es)  
+34 661 89 71 88  
[info@mibgroup.es](mailto:info@mibgroup.es)



Ref.-ID: MIBGR5394406

Estepona

Апартамент



2



2



76 m2

Two bedroom recently finished and newly build contemporary apartment in the heart of Estepona. Its modern Mediterranean architecture combines some Arabic features on the exterior with large windows on the interior. The landscaping project is designed by the international price winning landscaper Mathieu Lebre. The apartment has a fully fitted open kitchen with breakfast bar and gives out to a bright open space living room with sliding doors to a spacious 75m2 terrace. The terrace could be turned into a second outside living room, a personal garden with flowerpots, or an outside dining and kitchen area, anything you have in mind to enjoy the panoramic views all around. The apartment has two bedrooms and bathrooms with build in cabinets. There is a community pool with free Wifi and there are communal areas with a fitness and a reunion room etc. There is an underground parking included. Its centrally situated to reach the A7 where you within no time in Marbella, Benahavis, San Pedro or Sotogrande. The newly build modern Aldi supermarket is around the corner. Easy access to health centres, schools and restaurants. Have a coffee in the morning while you contemplate the light that filters through the vegetation of native fruit trees and reaches the interior of your home, combined with a fresh and modern Mediterranean architectural design, will make your home a unique space in which to life your day to day.

**Расположение**

- ✓ Город
- ✓ Коммерческая зона
- ✓ Рядом с портом
- ✓ Рядом с магазинами
- ✓ Рядом с морем
- ✓ Рядом с городом
- ✓ Близко к школам
- ✓ Рядом с портом
- ✓ Урбанизация

**Особенности**

- ✓ Лифт
- ✓ Встроенные шкафы
- ✓ Рядом с транспортом
- ✓ Приватная терраса
- ✓ Ванная комната

**Категория**

- ✓ Современного

**ОРИЕНТАЦИЯ**

- ✓ Юго-запад

**Состояние**

- ✓ Хорошее
- ✓ Новое строительство

**бассейн**

- ✓ Общий

**Климат-контроль**

- ✓ Кондиционер

**ВИД**

- ✓ Горы
- ✓ Сельская местность

**Мебель**

- ✓ Без мебели

**Кухня**

- ✓ Полностью оборудованная

**Сад**

- ✓ Общественный

**меры безопасности**

- ✓ Огражденный комплекс

**Парковка**

- ✓ Подземная