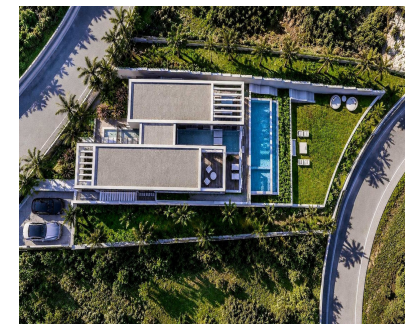
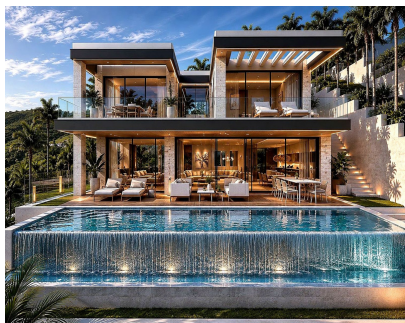




Продажа - Участок - Elviria  
570.000€

[www.mibgroup.es](http://www.mibgroup.es)  
+34 661 89 71 88  
[info@mibgroup.es](mailto:info@mibgroup.es)



Ref.-ID: MIBGR5419873

Elviria

Участок

 480 m2

 1044 m2

PLOT WITH PROJECT IN SANTA MARÍA, ELVIRIA, MARBELLA Plot: 1,044 m<sup>2</sup> | Built: 480 m<sup>2</sup> | 4 Bedrooms | 6 Bathrooms | 2 Garage Spaces A rare off-plan opportunity in one of the best residential areas on the east side of Marbella. This project is a high end contemporary villa set in the Santa María area of Elviria. Clean lines, floor-to-ceiling glazing and natural stone finishes throughout. The infinity pool spans two terrace levels with tropical gardens and lounge areas around it, perfect for entertaining or just a quiet evening at home. 480 m<sup>2</sup> of living space across four suites, six bathrooms, private spa, fully equipped gym and a dedicated lounge area. The planning application has been submitted and the licence is expected in the coming months. Once it comes through the price will go up, so now is the right time to buy. The Area, Santa María, Elviria Elviria is one of the most popular areas on the eastern Costa del Sol, 12 kilometres from the Golden Mile and about 20 minutes from Málaga Airport. Santa María is low density, quiet and green, and that kind of setting is not easy to find this close to Marbella. Nikki Beach is a few minutes away, international schools and golf courses are nearby, and Elviria village has everything you need for day to day life. The N-340 and AP-7 connect you quickly to Puerto Banús, Marbella and Málaga. Privacy, nature and great connections. That is why this area remains one of the best options on the Costa del Sol for a permanent home or a solid investment.

**Расположение**

- ✓ Рядом с гольф-полем
- ✓ Рядом с магазинами
- ✓ Близко к школам
- ✓ Урбанизация

**ОРИЕНТАЦИЯ**

- ✓ Восток
- ✓ Юго-восток

**Состояние**

- ✓ Новое строительство

**ВИД**

- ✓ Море
- ✓ Гольф
- ✓ Сад
- ✓ Озеро

**Мебель**

- ✓ Без мебели

**Категория**

- ✓ Строительство не завершено
- ✓ С разрешением на строительство