

## Продажа - Дом - Fuengirola

**680.000€**

**Fuengirola**

**Дом**

**Коммунальные: 1,200 EUR / год**

**ИБИ: 920 EUR / год**



**4**



**3**



**238 m2**



**27 m2**

If your dream is to enjoy a luxury home in the center of Fuengirola and within walking distance of the promenade and the beach, you have just found the ideal home to make it come true. This brand new townhouse is completely renovated with luxury qualities. It has 4 double bedrooms, 3 bathrooms, a toilet, a fully furnished and equipped kitchen with the latest design and appliances, a living-dining room with access to the terrace with access to the community pool. The master bedroom has a large dressing room, and bathroom-ensuite. In addition, this house has a private and closed garage for two cars, and a semi-basement with the option of converting it into an apartment, cinema room, gym, games room, etc ... A luxury of enclave, of housing and location. Feel free to come visit her.

### **Расположение**

- ✓ Город
- ✓ Деревня
- ✓ Рядом с магазинами
- ✓ Рядом с морем
- ✓ Рядом с городом
- ✓ Близко к школам
- ✓ Рядом с портом
- ✓ Урбанизация

### **Климат-контроль**

- ✓ Кондиционер
- ✓ Кондиционер холодного воздуха

### **Кухня**

- ✓ Полностью оборудованная

### **ОРИЕНТАЦИЯ**

- ✓ Юго-восток

### **ВИД**

- ✓ Город

### **меры безопасности**

- ✓ Электрические жалюзи

### **Состояние**

- ✓ Отличное
- ✓ Недавно отремонтированная

### **Особенности**

- ✓ Рядом с транспортом
- ✓ Солярий
- ✓ Кладовка
- ✓ Мраморные полы
- ✓ Двойные стеклопакеты

### **Парковка**

- ✓ Подземная
- ✓ Гараж
- ✓ Приватная

### **бассейн**

- ✓ Общий

### **Мебель**

- ✓ Частично меблированный

















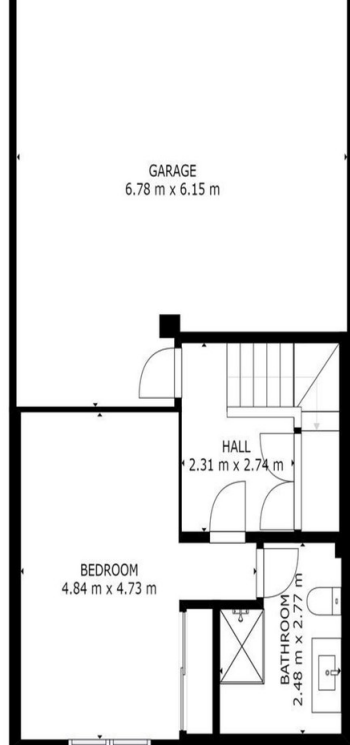










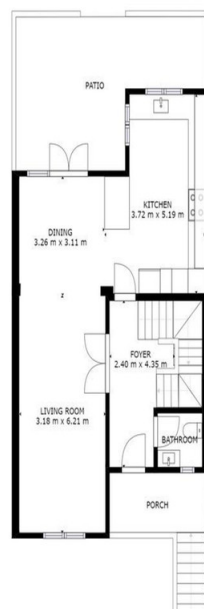
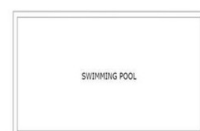


GROSS INTERNAL AREA  
 FLOOR 1: 34 m<sup>2</sup>, FLOOR 2: 64 m<sup>2</sup>  
 FLOOR 3: 67 m<sup>2</sup>, FLOOR 4: 12 m<sup>2</sup>  
 EXCLUDED AREAS: GARAGE: 38 m<sup>2</sup>  
 DECK: 9 m<sup>2</sup>  
 TOTAL: 176 m<sup>2</sup>

SIZES AND DIMENSIONS ARE APPROXIMATE, ACTUAL MAY VARY.



FLOOR 1

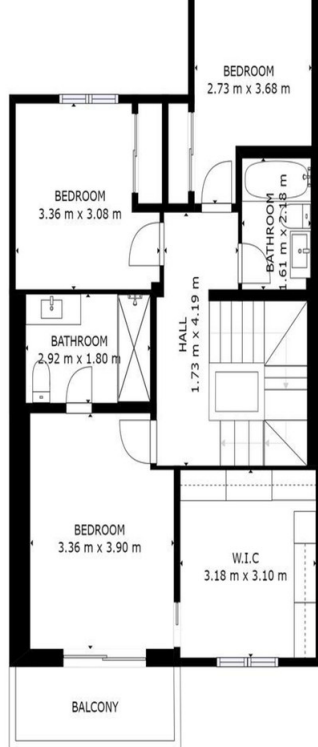


GROSS INTERNAL AREA  
 FLOOR 1: 34 m<sup>2</sup>, FLOOR 2: 64 m<sup>2</sup>  
 FLOOR 3: 67 m<sup>2</sup>, FLOOR 4: 12 m<sup>2</sup>  
 EXCLUDED AREAS: GARAGE: 38 m<sup>2</sup>  
 DECK: 9 m<sup>2</sup>  
 TOTAL: 176 m<sup>2</sup>

SIZES AND DIMENSIONS ARE APPROXIMATE, ACTUAL MAY VARY.



FLOOR 2

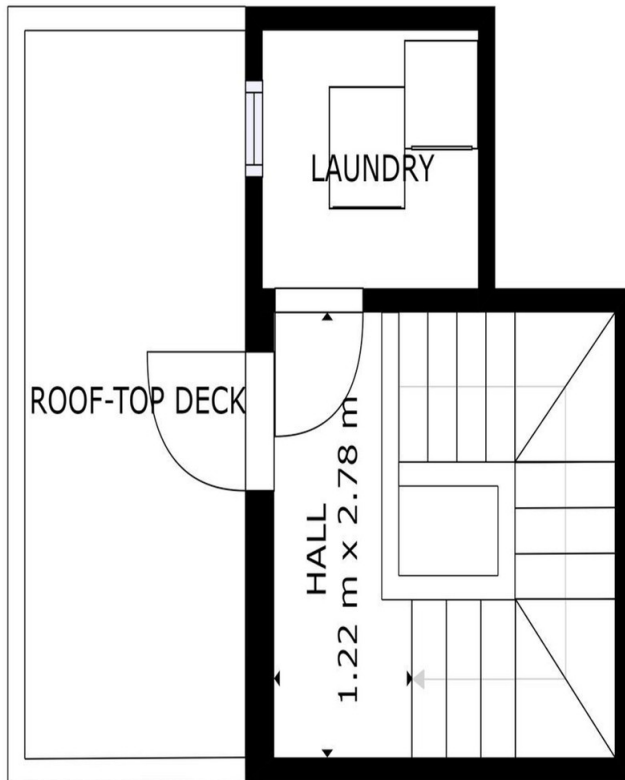


GROSS INTERNAL AREA  
 FLOOR 1: 34 m<sup>2</sup>, FLOOR 2: 64 m<sup>2</sup>  
 FLOOR 3: 67 m<sup>2</sup>, FLOOR 4: 12 m<sup>2</sup>  
 EXCLUDED AREAS: GARAGE: 38 m<sup>2</sup>  
 DECK: 9 m<sup>2</sup>  
 TOTAL: 176 m<sup>2</sup>

SIZES AND DIMENSIONS ARE APPROXIMATE, ACTUAL MAY VARY.



FLOOR 3



GROSS INTERNAL AREA  
 FLOOR 1: 34 m<sup>2</sup>, FLOOR 2: 64 m<sup>2</sup>  
 FLOOR 3: 67 m<sup>2</sup>, FLOOR 4: 12 m<sup>2</sup>  
 EXCLUDED AREAS: GARAGE: 38 m<sup>2</sup>  
 DECK: 9 m<sup>2</sup>  
 TOTAL: 176 m<sup>2</sup>

SIZES AND DIMENSIONS ARE APPROXIMATE, ACTUAL MAY VARY.



FLOOR 4