

## Продажа - Коммерческая - Marbella

**1.650.000€**

**Marbella**

**Коммерческая**



**8**



**2**



**307 m2**

Unique opportunity: Large commercial premises for sale located in one of the main shopping streets of Marbella, just a few metres from the Tax Office and the main Post Office. It is a luxury local located at street level with south orientation and a facade of almost 10 linear meters and 7 meters high, which gives it a lot of light and prestige. The interior built area of this establishment is more than 307 m2 distributed over two levels. On the ground floor there is a majestic entrance with space for a large meeting/presentation table and a wide staircase leading to the upper level. On this same ground floor we have a reception area, 4 offices, a large archive, a kitchen and a bathroom, all with a total surface area of 171 m2. On the upper floor, which can be accessed by the aforementioned staircase at the main entrance, as well as by a spiral staircase at the back of the premises, there is a large representative office, 2 other rooms/offices, and a toilet, with a total available surface area of 171 m2. In short: A unique opportunity to locate your business or office in one of the busiest and most representative areas of Marbella, Malaga.

### Расположение

✓ Город

### ОРИЕНТАЦИЯ

✓ Юг

### Состояние

✓ Хорошее

### Климат-контроль

✓ Кондиционер

### Особенности

✓ Мраморные полы

### Кухня

✓ Частично оборудованная

### Коммунальные услуги

✓ Электричество  
✓ Питьевая вода  
✓ Телефон

### Категория

✓ Перепродажа























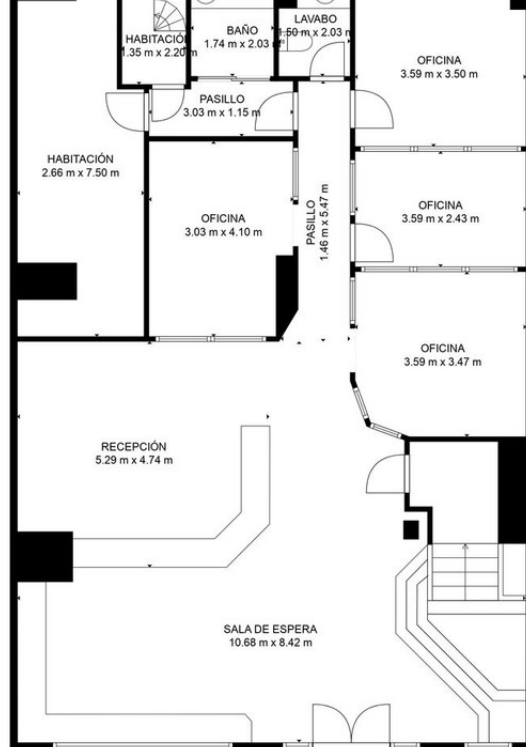






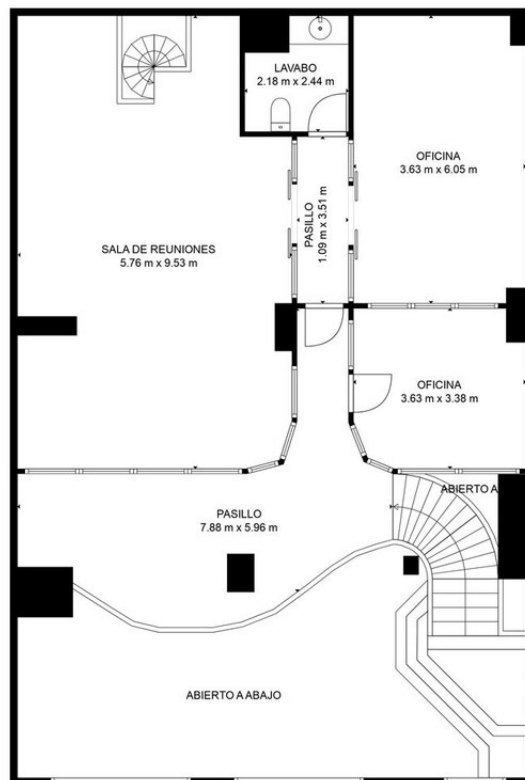






**TOTAL: 307 m2**  
 1. PLANTA: 171 m2, 2. PLANTA: 136 m2  
 ÁREAS EXCLUIDAS: ABIERTO A ABAJO: 36 m2

LAS MEDIDAS SON CALCULADAS UTILIZANDO LA TECNOLOGÍA CUBICASA. SON DE ALTA FIABILIDAD PERO NO GARANTIZADAS.



**TOTAL: 307 m2**  
 1. PLANTA: 171 m2, 2. PLANTA: 136 m2  
 ÁREAS EXCLUIDAS: ABIERTO A ABAJO: 36 m2

LAS MEDIDAS SON CALCULADAS UTILIZANDO LA TECNOLOGÍA CUBICASA. SON DE ALTA FIABILIDAD PERO NO GARANTIZADAS.