

**Продажа - Дом - Venahavís**

**2.150.000€**

Коммунальные: 2,364 EUR / год

ИБИ: 1,761 EUR / год

Мусор: 18 EUR / год



5



4



761 m<sup>2</sup>



1217 m<sup>2</sup>

Luxury Andalusian Villa with Heated Pool, Jacuzzi & 5-Car Garage | La Alquería Exceptional Andalusian-style villa offering 761 m<sup>2</sup> of built space on a 1,217 m<sup>2</sup> plot, located in the prestigious area of La Alquería, Benahavís. This is a rare opportunity to acquire a spacious, elegant home with features that clearly set it apart from other villas in the area. The property boasts large living areas with high ceilings, creating an immediate sense of volume, light and luxury. With five generously sized bedrooms, the layout is ideal for family living, entertaining guests or creating dedicated work and leisure spaces. One of the key highlights is the heated swimming pool and jacuzzi, allowing year-round enjoyment and significantly enhancing lifestyle value. The villa also benefits from open views on both sides of the house, a highly sought-after feature that provides light, privacy and multiple orientations throughout the day. A closed garage with capacity for up to five cars is an exceptional advantage, rarely found in this area, offering comfort, security and practicality for owners and guests alike. A private internal elevator serving all three levels, with access from the garage to the kitchen/pantry and the bedroom area. Built in 2004, the villa combines traditional Andalusian character with modern comfort and solid construction. The location is ideal: close to golf courses, international schools, shops and with easy access to Marbella and San Pedro. The owner is motivated, and the property is currently very well priced compared to other villas in La Alquería, especially considering its size, layout, amenities and unique features. A standout home for buyers seeking space, privacy, views and year-round comfort in one of Benahavís' most desirable residential areas. Private viewings and virtual tours available upon request. Key Features - Built area: 761 m<sup>2</sup> - Plot: 1,217 m<sup>2</sup> - 5 bedrooms, 4 bathrooms + guest toilet - High ceilings and spacious rooms - Heated swimming pool & jacuzzi - Open views on both sides of the property - Garage for 5 cars - Indoor elevator connecting all 3 floors - Built in 2004 - Prestigious La Alquería, Benahavís - Motivated seller - excellent value at current price. The first two photos show a digitally enhanced exterior color to illustrate the villa's potential appearance. The owner is willing to paint the house in your preferred color before handover, making this a move-in ready home tailored to your taste.

#### Расположение

✓ Рядом с гольф-полем

#### ОРИЕНТАЦИЯ

✓ Запад

#### Состояние

✓ Отличное

#### бассейн

✓ Приватный  
✓ С подогревом

#### Климат-контроль

✓ Кондиционер  
✓ Камин

#### ВИД

✓ Море  
✓ Горы  
✓ Гольф

#### Особенности

✓ Крытая терраса  
✓ Лифт  
✓ Встроенные шкафы  
✓ Приватная терраса  
✓ Солярий  
✓ Игровая комната  
✓ Кладовка  
✓ Ванная комната  
✓ Доступ для инвалидов  
✓ Мраморные полы  
✓ Джакузи  
✓ Бар  
✓ Подвал

#### Мебель

✓ Полностью меблированный

#### Кухня

✓ Полностью оборудованная

#### Сад

✓ Приватный  
✓ Простой в уходе

#### меры безопасности

✓ Электрические жалюзи  
✓ Домофон  
✓ Сигнализация  
✓ Сейф

#### Парковка

✓ Гараж  
✓ Приватная

#### Категория

✓ Перепродажа































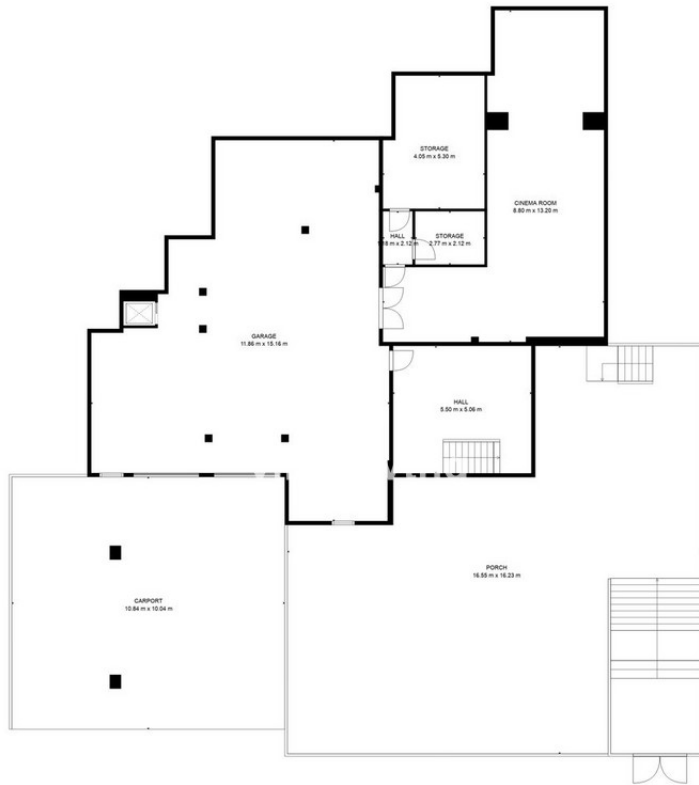






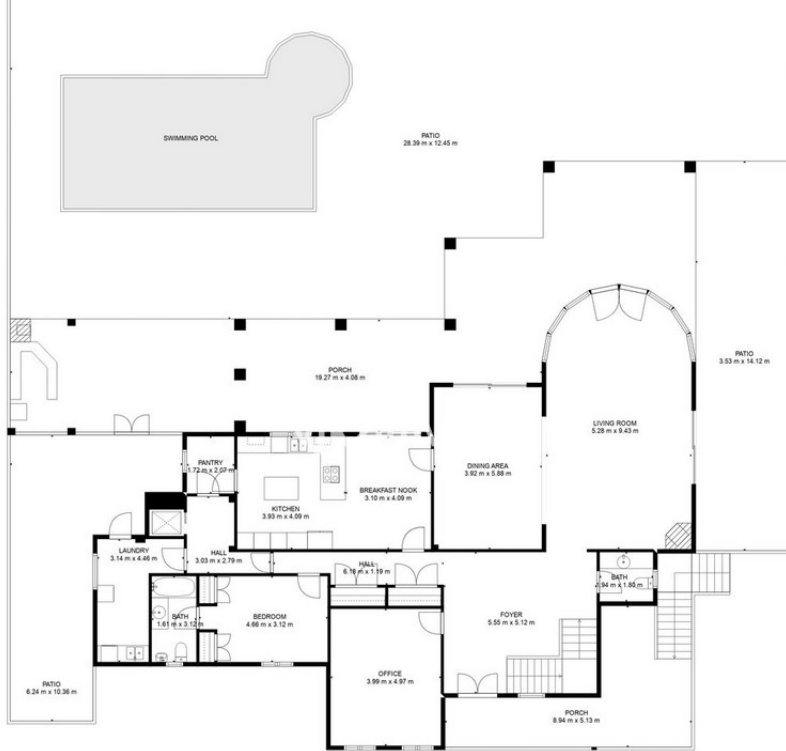






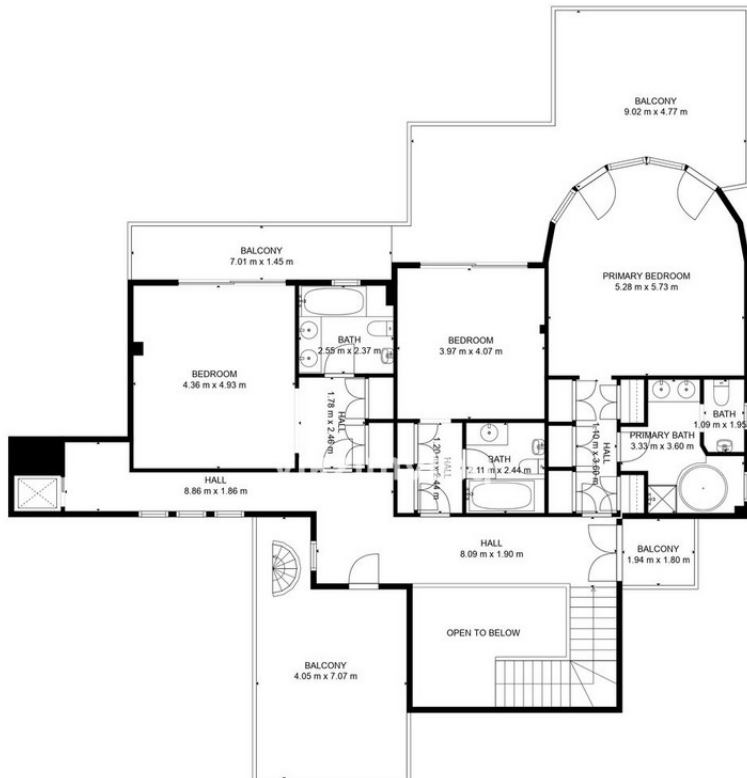
**TOTAL: 461 m<sup>2</sup>**  
 FLOOR 0: 108 m<sup>2</sup>, FLOOR 1: 207 m<sup>2</sup>, FLOOR 2: 146 m<sup>2</sup>, FLOOR 3: 0 m<sup>2</sup>  
 EXCLUDED AREAS: GARAGE: 131 m<sup>2</sup>, STORAGE: 26 m<sup>2</sup>, PORCH: 351 m<sup>2</sup>,  
 CARPORT: 109 m<sup>2</sup>, PATIO: 334 m<sup>2</sup>, BALCONY: 74 m<sup>2</sup>,  
 OPEN TO BELOW: 11 m<sup>2</sup>, TERRACE: 44 m<sup>2</sup>

FLOOR PLAN CREATED BY CUBICASA APP. MEASUREMENTS DEEMED HIGHLY RELIABLE BUT NOT GUARANTEED.



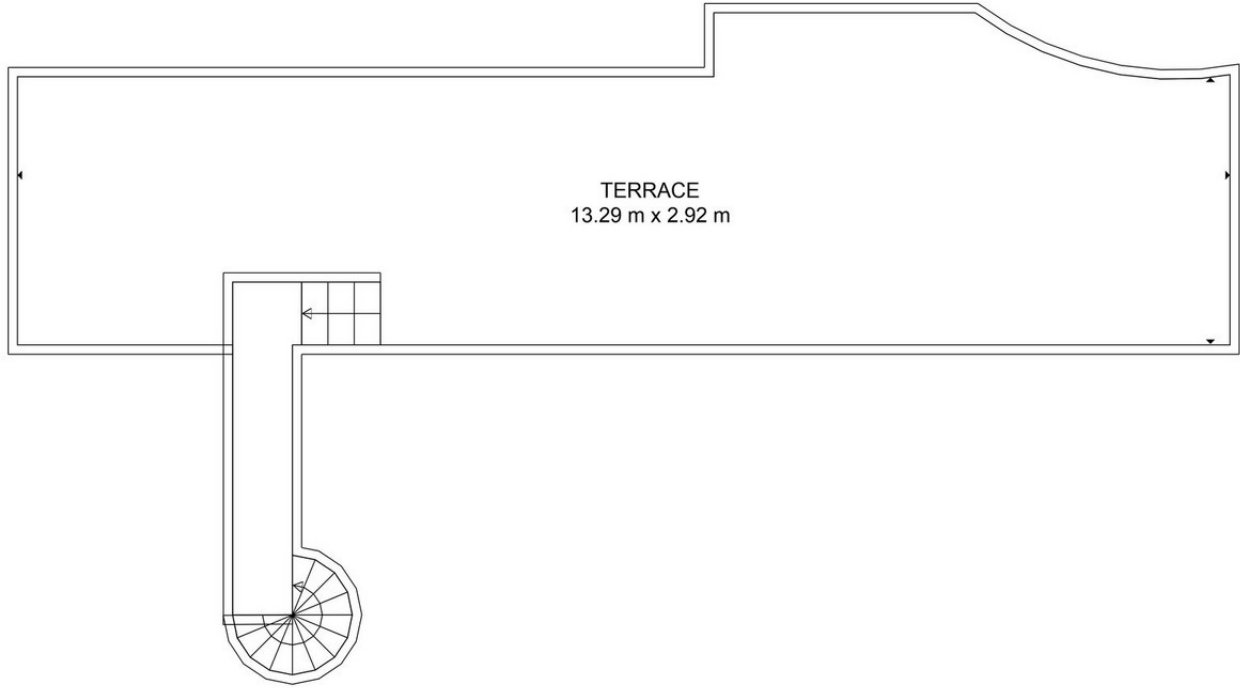
**TOTAL: 461 m<sup>2</sup>**  
 FLOOR 0: 108 m<sup>2</sup>, FLOOR 1: 207 m<sup>2</sup>, FLOOR 2: 146 m<sup>2</sup>, FLOOR 3: 0 m<sup>2</sup>  
 EXCLUDED AREAS: GARAGE: 131 m<sup>2</sup>, STORAGE: 26 m<sup>2</sup>, PORCH: 351 m<sup>2</sup>,  
 CARPORT: 109 m<sup>2</sup>, PATIO: 334 m<sup>2</sup>, BALCONY: 74 m<sup>2</sup>,  
 OPEN TO BELOW: 11 m<sup>2</sup>, TERRACE: 44 m<sup>2</sup>

FLOOR PLAN CREATED BY CUBICASA APP. MEASUREMENTS DEEMED HIGHLY RELIABLE BUT NOT GUARANTEED.



**TOTAL: 461 m<sup>2</sup>**  
 FLOOR 0: 108 m<sup>2</sup>, FLOOR 1: 207 m<sup>2</sup>, FLOOR 2: 146 m<sup>2</sup>, FLOOR 3: 0 m<sup>2</sup>  
 EXCLUDED AREAS: GARAGE: 131 m<sup>2</sup>, STORAGE: 26 m<sup>2</sup>, PORCH: 351 m<sup>2</sup>,  
 CARPORT: 109 m<sup>2</sup>, PATIO: 334 m<sup>2</sup>, BALCONY: 74 m<sup>2</sup>,  
 OPEN TO BELOW: 11 m<sup>2</sup>, TERRACE: 44 m<sup>2</sup>

FLOOR PLAN CREATED BY CUBICASA APP. MEASUREMENTS DEEMED HIGHLY RELIABLE BUT NOT GUARANTEED.



**TOTAL: 461 m<sup>2</sup>**  
FLOOR 0: 108 m<sup>2</sup>, FLOOR 1: 207 m<sup>2</sup>, FLOOR 2: 146 m<sup>2</sup>, FLOOR 3: 0 m<sup>2</sup>  
EXCLUDED AREAS: GARAGE: 131 m<sup>2</sup>, STORAGE: 26 m<sup>2</sup>, PORCH: 351 m<sup>2</sup>,  
CARPORT: 109 m<sup>2</sup>, PATIO: 334 m<sup>2</sup>, BALCONY: 74 m<sup>2</sup>,  
OPEN TO BELOW: 11 m<sup>2</sup>, TERRACE: 44 m<sup>2</sup>

FLOOR PLAN CREATED BY CUBICASA APP. MEASUREMENTS DEEMED HIGHLY RELIABLE BUT NOT GUARANTEED.

