

Продажа - Апартамент - Benahavís

789.000€

Benahavís

Апартамент

Коммунальные: 5,880 EUR / год

ИБИ: 460 EUR / год

Мусор: 18 EUR / год



3



2



130 m2

Welcome to this stunning property in the exclusive urbanization of La Alborada Homes in Benahavís. Completely renovated in 2022, this stylish apartment blends modern luxury, comfort, and a prime location with rental license already in place. With over 100 m² of interior space, it features 3 spacious bedrooms, 2 fully upgraded bathrooms with premium finishes, and a very private 45 m² sun-drenched terrace boasting panoramic views of surrounding mountains. Every detail has been carefully selected, including a designer kitchen equipped with Bosch appliances, a BORA hob with integrated extractor, and a high-end countertop. The living room is elegantly finished with Cavalli wallpaper, enhancing the luxurious feel of the space. The property includes 1 private underground parking space, access to a communal swimming pool reserved for residents, and a gym with views of the sea and golf course. Set in a peaceful location in the hills, it's just a 2-minute drive to San Pedro, 4 minutes to the beach, and only 6 minutes to the iconic Puerto Banús. A rental license is already in place, making it ideal both as a permanent home or a high-yield investment for short or long-term rentals.

Расположение

- ✓ Рядом с гольф-полем
- ✓ Рядом с магазинами
- ✓ Рядом с городом
- ✓ Близко к школам

Климат-контроль

- ✓ Кондиционер

Сад

- ✓ Общественный

ОРИЕНТАЦИЯ

- ✓ Северо-восток

ВИД

- ✓ Горы
- ✓ Гольф
- ✓ Сельская местность
- ✓ Сад

меры безопасности

- ✓ Огражденный комплекс

Состояние

- ✓ Недавно отремонтированная

Особенности

- ✓ Крытая терраса
- ✓ Лифт
- ✓ Встроенные шкафы
- ✓ Приватная терраса
- ✓ Тренажерный зал
- ✓ Кладовка
- ✓ Мраморные полы

Парковка

- ✓ Приватная

бассейн

- ✓ Общий

Мебель

- ✓ Полностью меблированный







































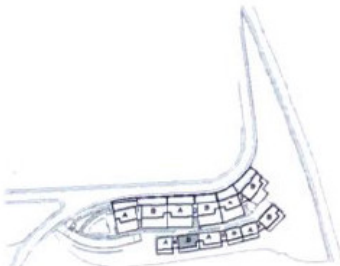




BENAHAVIS. MÁLAGA



	SUP. ÚTIL INT/EXT	
Estar + comedor	29.51 m ²	int
Dormitorio principal	13.87 m ²	int
Dormitorio 2	10.60 m ²	int
Dormitorio 3	10.55 m ²	int
Baño principal	5.38 m ²	int
Baño secundario	3.79 m ²	int
Cocina	9.05 m ²	int
Distribuidor	6.43 m ²	int
Tendedero	2.07 m ²	int
Terraza	37.87 m ²	ext



Superficie útil interior.	91.25 m ²
Superficie construida interior.	106.90 m ²
Superficie total construida (con zccc sin terrazas ni jardines).	128.39 m ²
Superficie construida de terraza.	44.12 m ²

