

## Продажа - Апартамент - Puerto Banús

**870.000€**

**Puerto Banús**

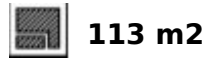
**Апартамент**



**2**



**2**



**113 m2**

Discover this beautifully renovated duplex penthouse perfectly positioned in the vibrant heart of Puerto Banús, boasting spectacular views directly over the iconic marina. Flooded with natural light and designed with an open-plan concept, the spacious interior seamlessly blends modern elegance with coastal charm. The main floor features a stylish, fully fitted kitchen and bright living area that opens onto a generous terrace — the ideal spot to relax and take in the lively marina atmosphere. This level also includes a comfortable bedroom and a contemporary bathroom. Upstairs, the second bedroom enjoys access to a private bathroom and opens out onto an expansive rooftop terrace, offering breathtaking panoramic views of the marina and the sparkling Mediterranean Sea — perfect for sunbathing, entertaining, or simply soaking in the scenery. This unbeatable location is not only ideal for enjoying unforgettable holidays but also represents a smart investment, with excellent rental potential throughout the year. Sold fully furnished and ready to move into, this is a turnkey opportunity to own a piece of paradise. Additionally, the building will soon be enhanced with the installation of a lift, adding further value and convenience. Don't miss the chance to own this extraordinary property in one of Marbella's most prestigious locations.

### Расположение

- ✓ На побережье
- ✓ Рядом с портом
- ✓ Рядом с магазинами
- ✓ Рядом с городом
- ✓ Близко к школам

### Климат-контроль

- ✓ Кондиционер

### ВИД

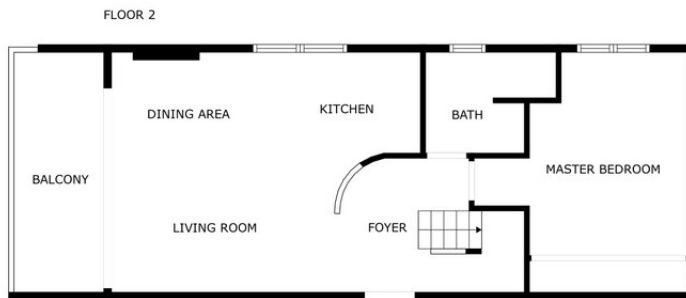
- ✓ Море
- ✓ Горы
- ✓ Панорамный

### Особенности

- ✓ Встроенные шкафы
- ✓ Рядом с транспортом
- ✓ Приватная терраса
- ✓ Солярий
- ✓ Ванная комната
- ✓ Двойные стеклопакеты
- ✓ Оптическое волокно

### Мебель

- ✓ Полностью меблированный



FLOOR 1

FLOOR 2

SIZES ARE APPROXIMATE, ACTUAL MAY VARY.





6u5vbuh1hk



6u5vbuh1hk















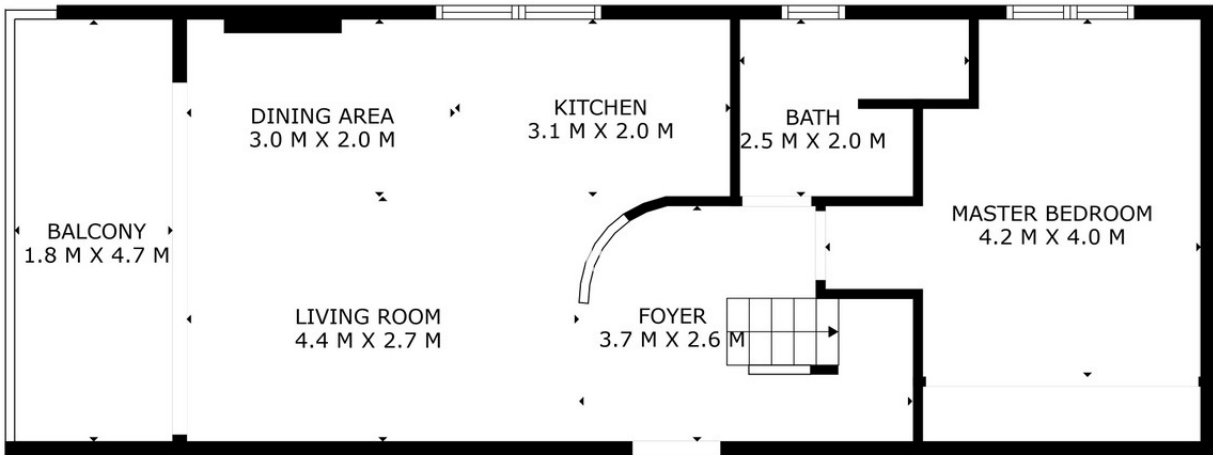






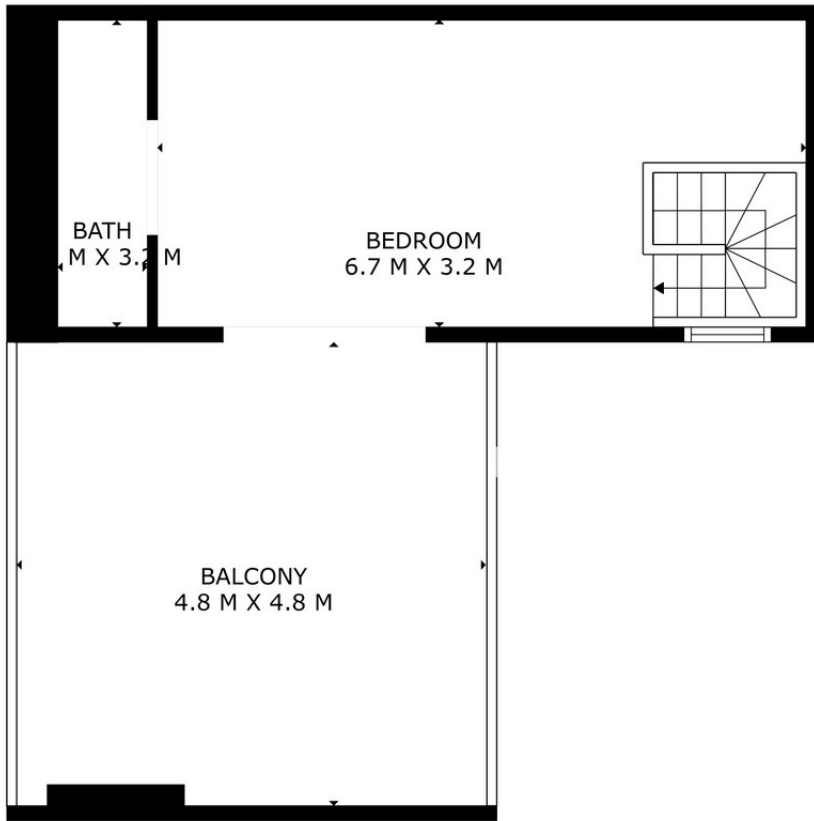






SIZES ARE APPROXIMATE, ACTUAL MAY VARY.





SIZES ARE APPROXIMATE, ACTUAL MAY VARY.

