

## Продажа - Дом - Benalmadena

# 935.000€

**Benalmadena**

**Дом**



4



4



229 m<sup>2</sup>



657 m<sup>2</sup>

In Capellanía, a quiet and well-connected area of Benalmádena, this property offers a 658 m<sup>2</sup> plot and 168 m<sup>2</sup> built area. In the main house, you'll find 3 bedrooms with 3 full bathrooms. The master suite, with its spacious walk-in closet, is the real showstopper. The home also features a large, fully equipped kitchen and a bright living-dining room filled with natural light. An independent guest house (1 bedroom + 1 bathroom) adds flexibility and plenty of possibilities. Outside, a raised wooden pool awaits—perfect for summer and easy to maintain—along with private parking for several vehicles. Features: PVC windows with double glazing, air conditioning in both houses, solar panels with a storage tank in the main house, and a 100 L electric water heater in the guest house. Excellent location, just minutes from the motorway and close to the seaside promenade. One of the key added values of this property is that the Community of Owners has approved the possibility of applying for and obtaining a HOLIDAY RENTAL LICENSE, opening up an excellent opportunity for both residential use and investment. This means that, in compliance with current regulations and subject to the corresponding administrative procedures, the property may be used for tourist rental purposes, offering attractive potential returns in an area of high demand. Contact me to arrange a viewing!

### Расположение

- ✓ Рядом с магазинами
- ✓ Рядом с городом
- ✓ Близко к школам

### Особенности

- ✓ Гостевой дом
- ✓ Кладовка
- ✓ Ванная комната

### бассейн

- ✓ Приватный

### Мебель

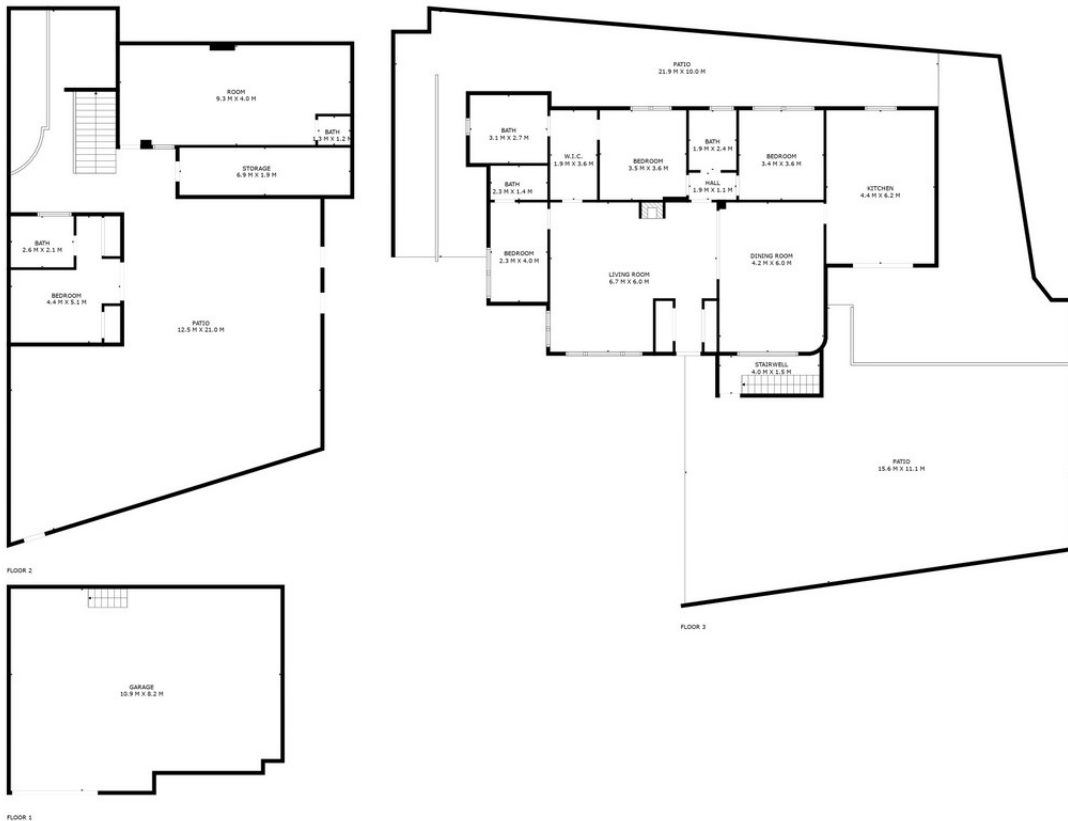
- ✓ Без мебели

### Климат-контроль

- ✓ Кондиционер

### ВИД

- ✓ Море
- ✓ Горы



SIZES ARE APPROXIMATE, ACTUAL MAY VARY.

















6u5vbuh1hk



6u5vbuh1hk





















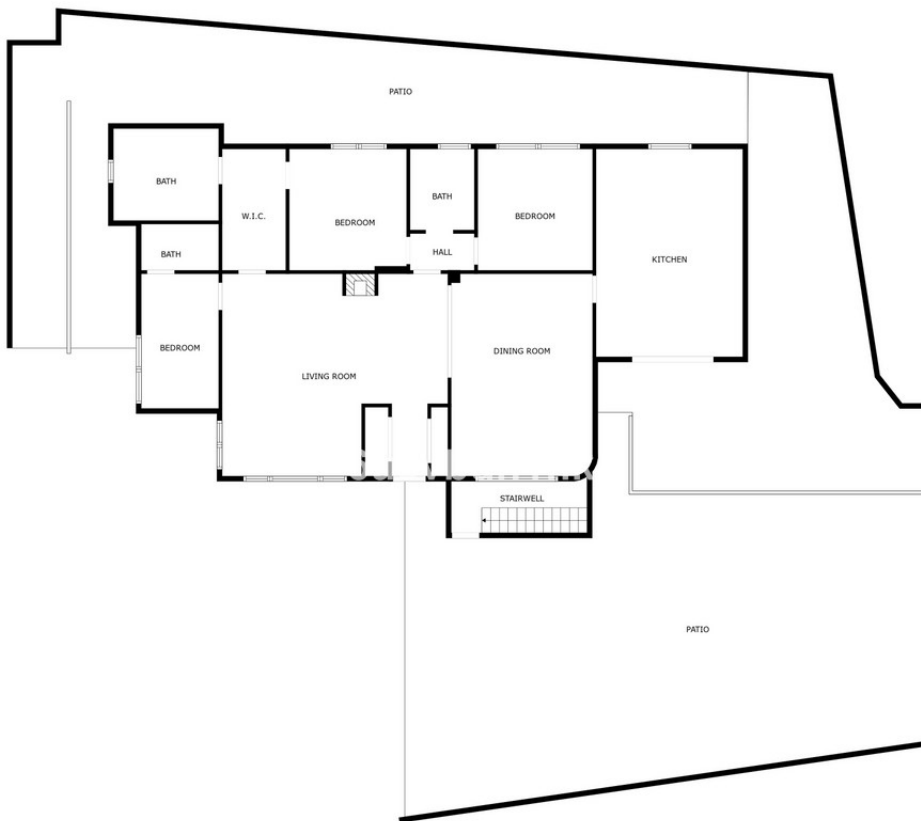
6u5vbuh1hk



6u5vbuh1hk

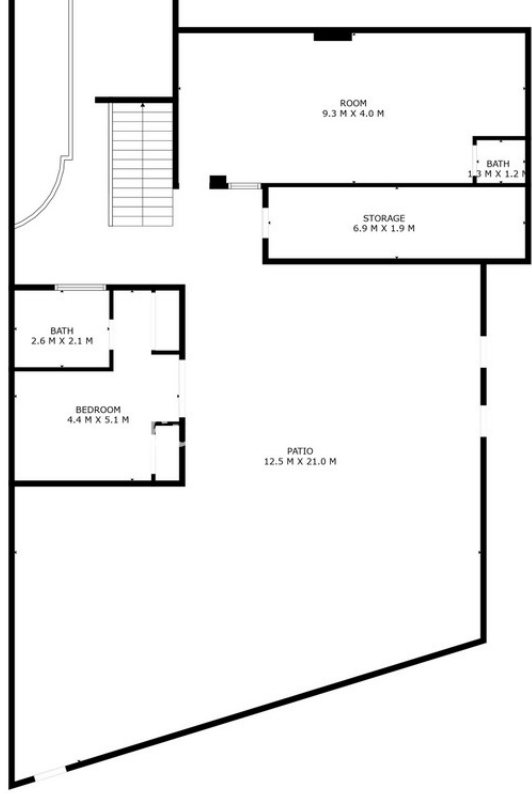


SIZES ARE APPROXIMATE, ACTUAL MAY VARY.

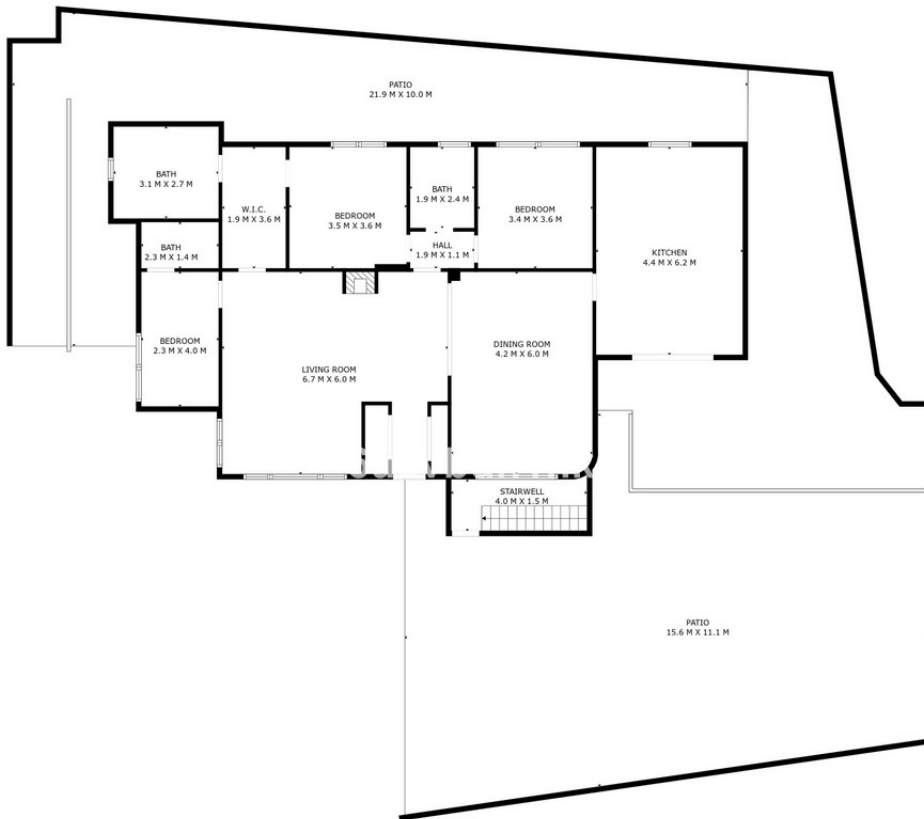


SIZES ARE APPROXIMATE, ACTUAL MAY VARY.





SIZES ARE APPROXIMATE, ACTUAL MAY VARY.



SIZES ARE APPROXIMATE, ACTUAL MAY VARY.

