

Продажа - Коммерческая - Benalmadena Costa

750.000€

Benalmadena Costa

Коммерческая



1028 m2

Excellent investment opportunity in one of the most consolidated and sought-after areas of the Costa del Sol. This property, located in Benalmádena Costa, comes with an approved basic project for the development of a parking and storage complex. Main features: • Built area: 1,028 m² • Current use: Parking and storage units • Approved basic project: □ • Planned distribution: 33 parking spaces + 33 storage rooms Situated in a residential and touristic area with high demand for both storage and parking, this project ensures solid and sustainable profitability — whether through sales or rentals. Just a few minutes from the beach and surrounded by residential buildings, shops, and hotels, this property represents a tangible, safe, and high-return investment right in the heart of Benalmádena Costa. Ideal for developers or investors seeking a profitable and low-risk asset in a prime location on the Costa del Sol.

Расположение

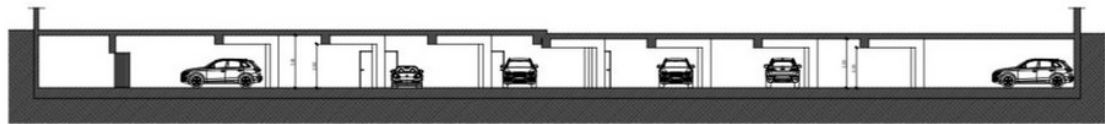
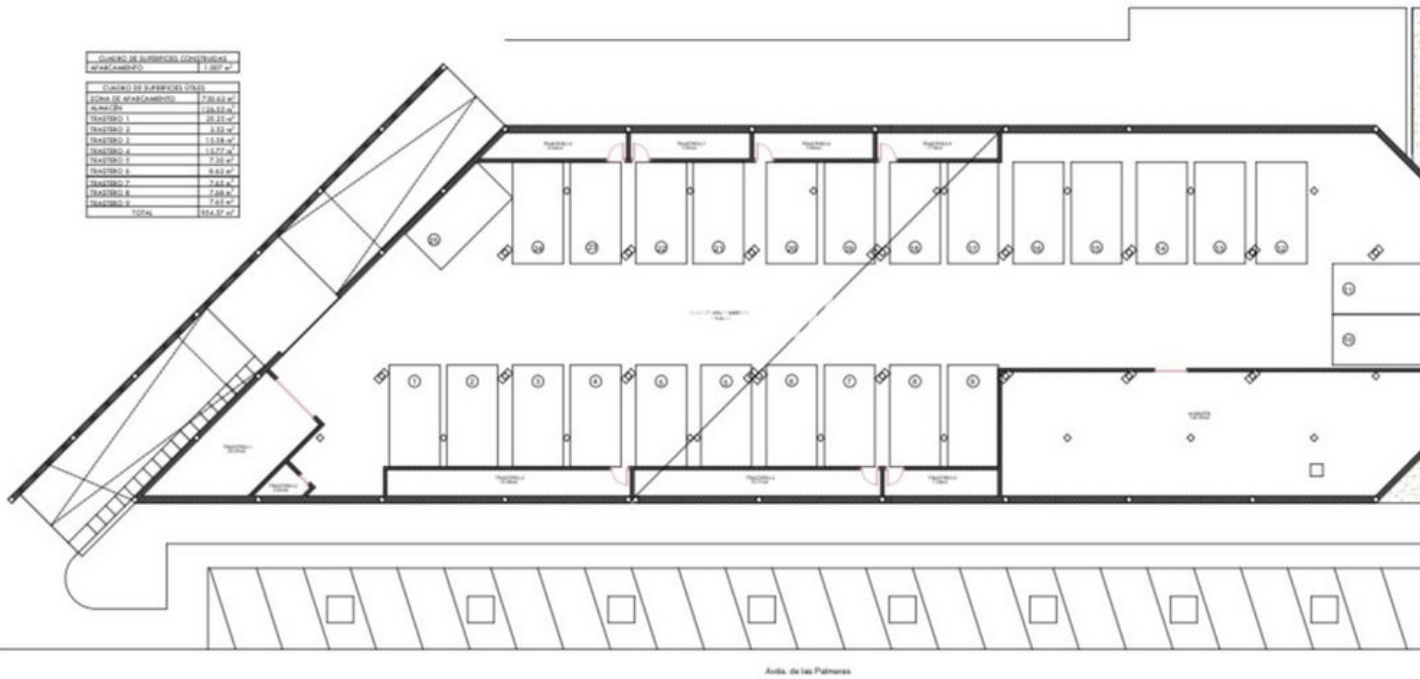
- ✓ На побережье
- ✓ Рядом с гольф-полем
- ✓ Рядом с портом
- ✓ Рядом с магазинами
- ✓ Рядом с городом
- ✓ Близко к школам

Особенности

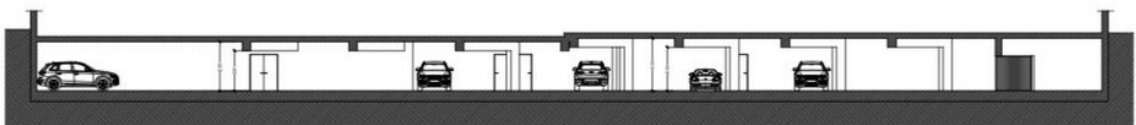
- ✓ Рядом с транспортом

CANTIDAD DE SUPERFICIES CONSTRUIDAS	
APARCAMIENTO	1.007 m ²

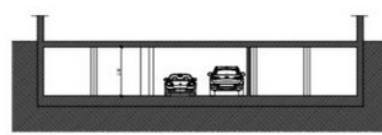
CANTIDAD DE SUPERFICIES VIGAS	
ÁREA DE APARCAMIENTO	720.63 m ²
ÁREA DE PASADIZO	128.55 m ²
TRAYECTO 1	20.22 m ²
TRAYECTO 2	15.51 m ²
TRAYECTO 3	15.51 m ²
TRAYECTO 4	15.77 m ²
TRAYECTO 5	7.20 m ²
TRAYECTO 6	6.52 m ²
TRAYECTO 7	7.88 m ²
TRAYECTO 8	2.66 m ²
TRAYECTO 9	7.53 m ²
TOTAL	916.97 m ²



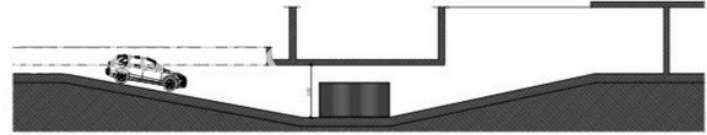
SECCIÓN A-A'



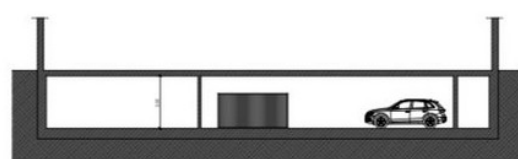
SECCIÓN B-B'



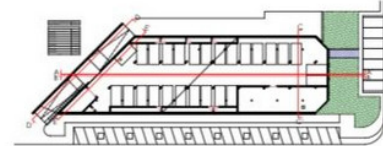
SECCIÓN C-C'



SECCIÓN D-D'



SECCIÓN E-E'



PROYECTO BÁSICO DE REFORMA DE APARCAMIENTO
Avda. Las Palmeras #7A, Benidorm (Alicante)

PROYECTISTA: ALPHA CAPITAL DEVELOPMENTS S.L.
ARQUITECTO: D. Sergio López Hernández

PROYECTO: PROYECTO BÁSICO
FECHA: 04
ESTADO: SECCIÓN ACTUAL

FECHA: 04
ESTADO: SECCIÓN ACTUAL